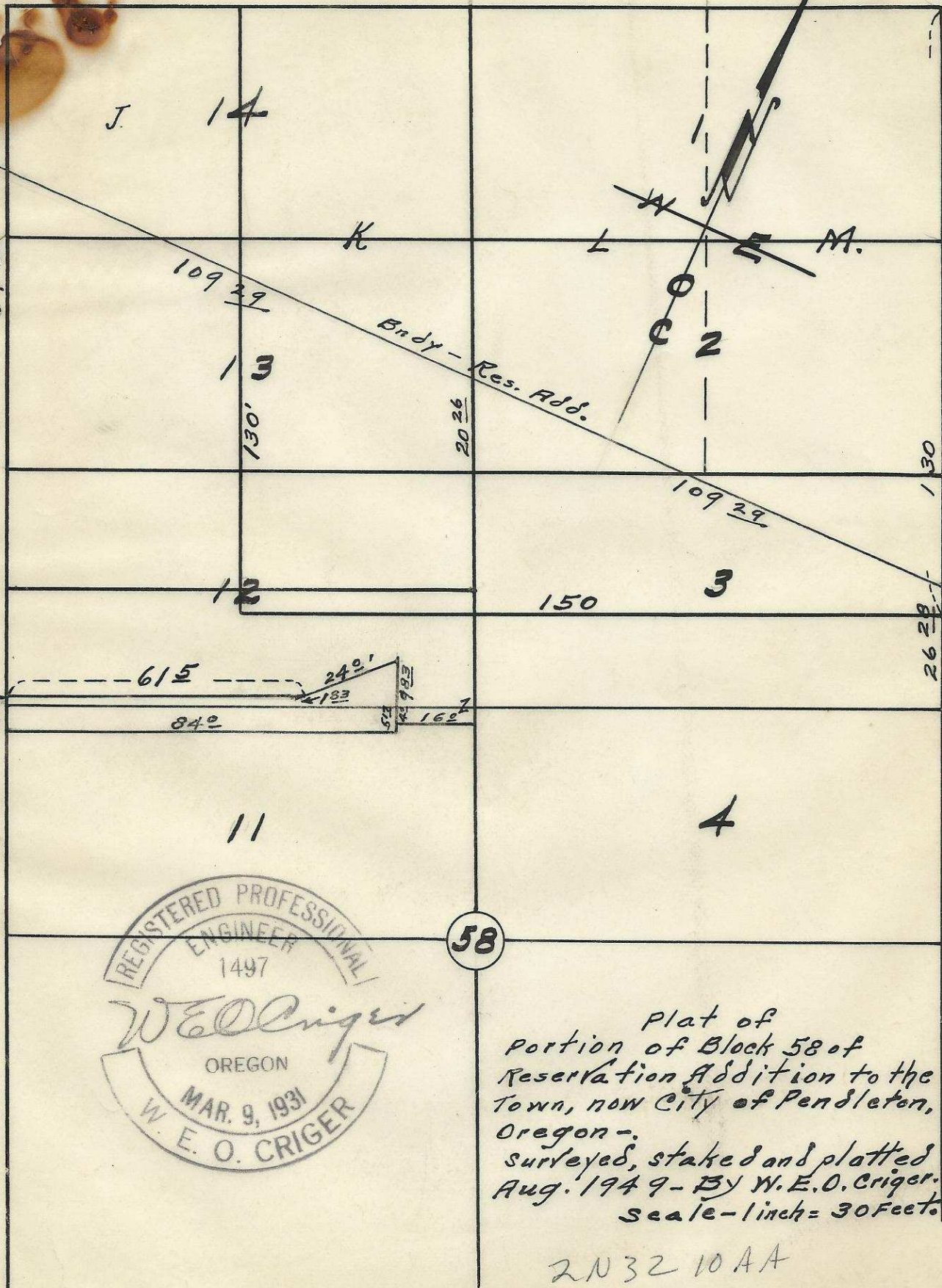


S. W. Dorion Ave.

S. W. 2nd St.

S. W. 1st St.



58



Plat of  
 Portion of Block 58 of  
 Reservation Addition to the  
 Town, now City of Pendleton,  
 Oregon -  
 surveyed, staked and plotted  
 Aug. 1949 - By W. E. O. Criger.  
 Scale - 1 inch = 30 Feet.

2N3210AA

06-251-Ax