

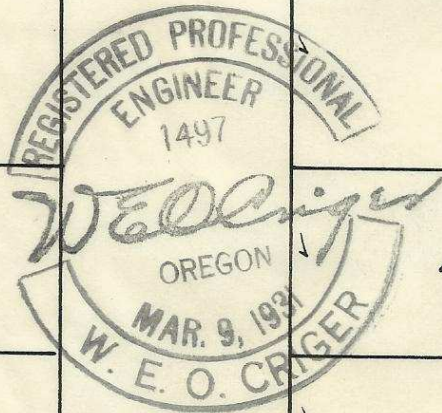
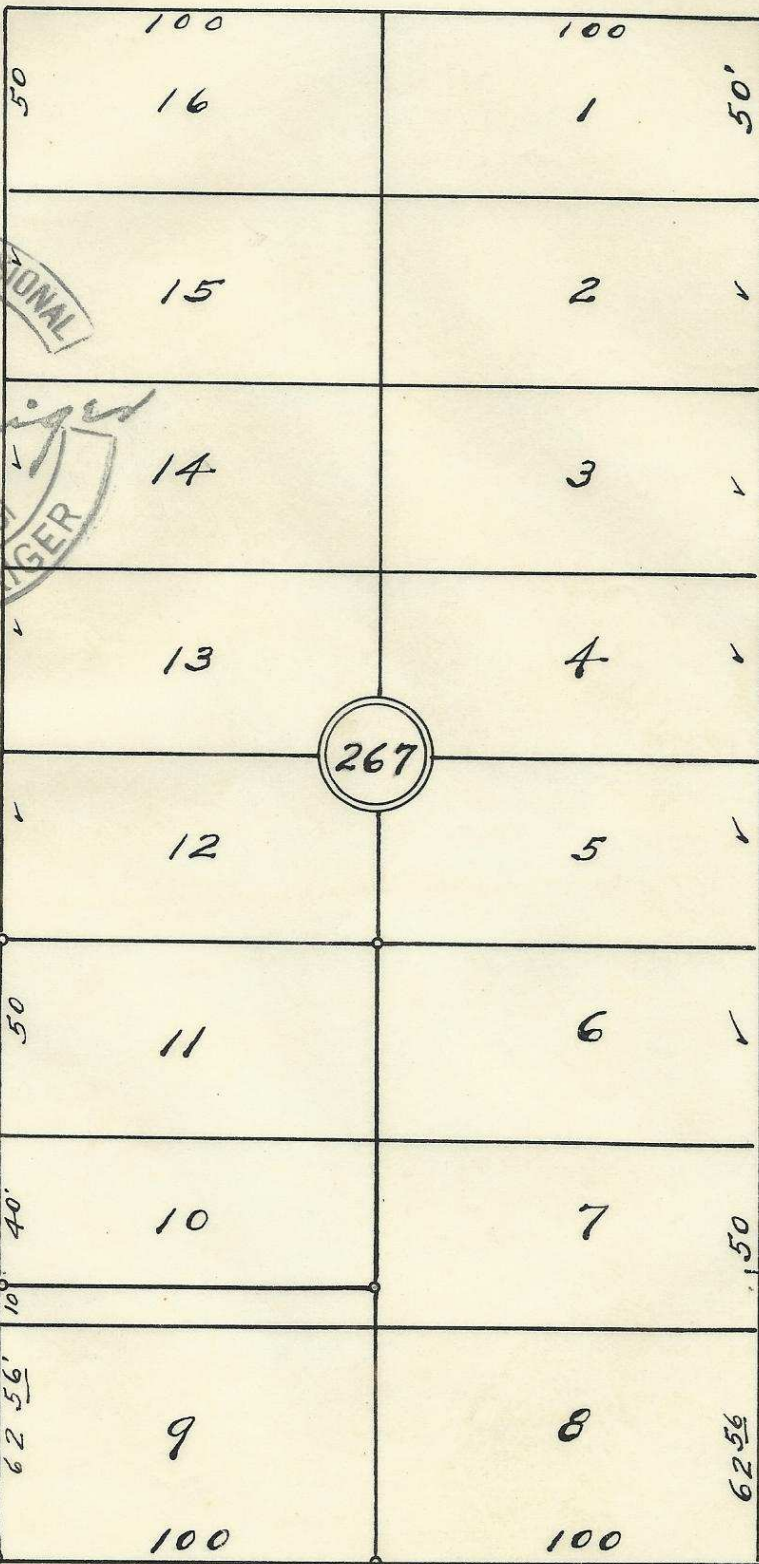
60

60

60

S.W. Isaac Ave.

60



S.W. 2nd St.

S.W. 1st St.

Plat showing
 Block 267 of Reservation
 Addition to the town,
 New City of Pendleton,
 Oregon.
 Surveyed, staked & platted
 March-1953-By W.E.O. Criger.
 Scale: 1 inch = 50 Ft.

South Boundary Res. Add.

2N3211CB

06-246-Ax