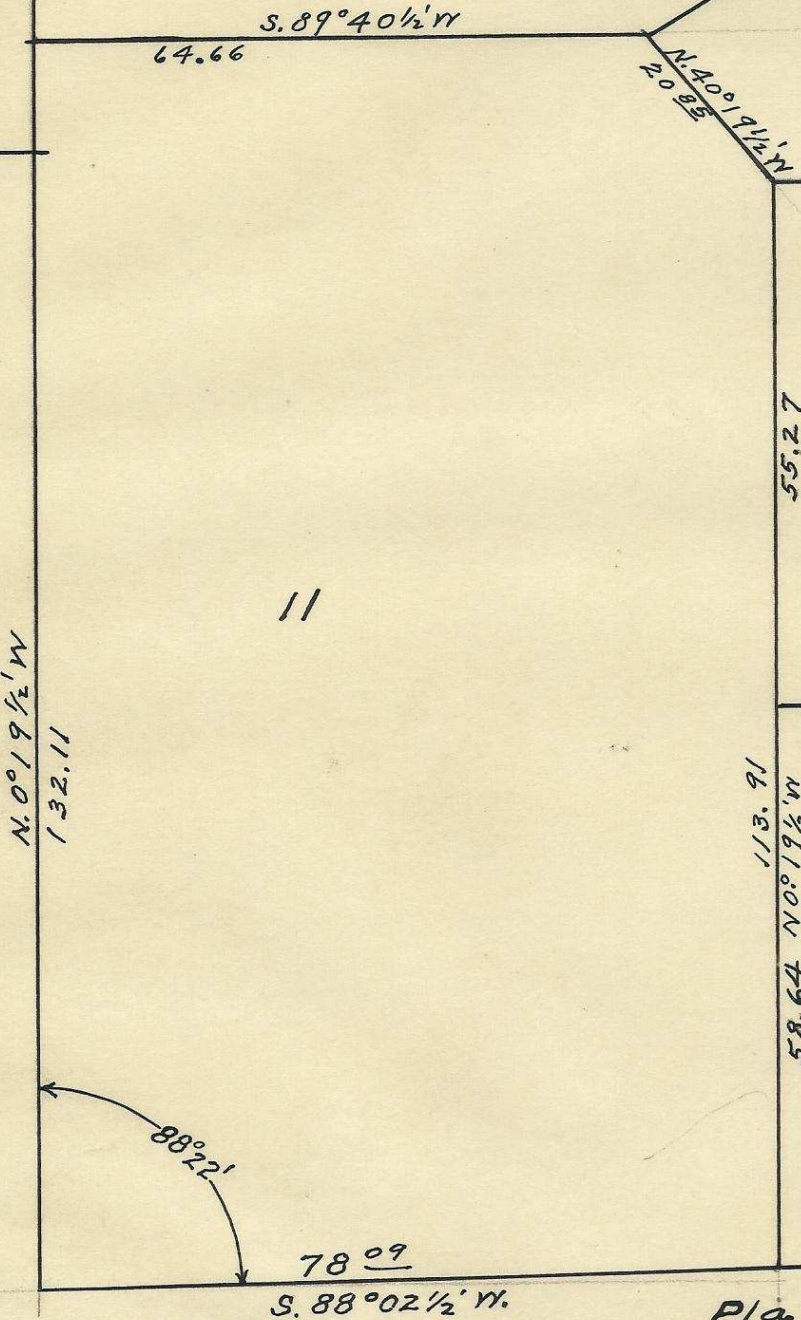
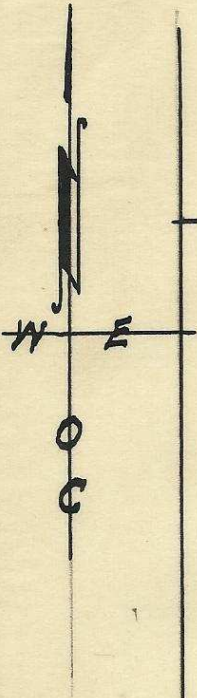
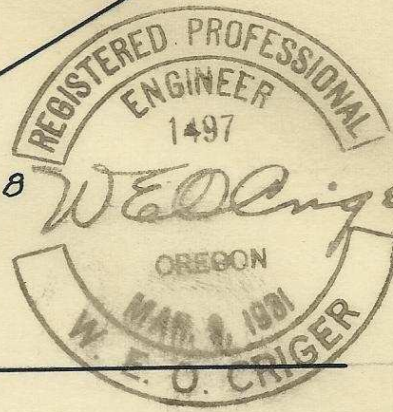


7



N. W. Horn Ave.

2N32 3DB

Plat of Lot 11 of Block 1,  
of Phelps Addition to the  
City of Pendleton, Oregon.  
Scale: 1 inch = 20 Feet.  
Surveyed, Staked & Platted,  
May-28, 1948-By W.E.O. Criger.

06-166-Ax