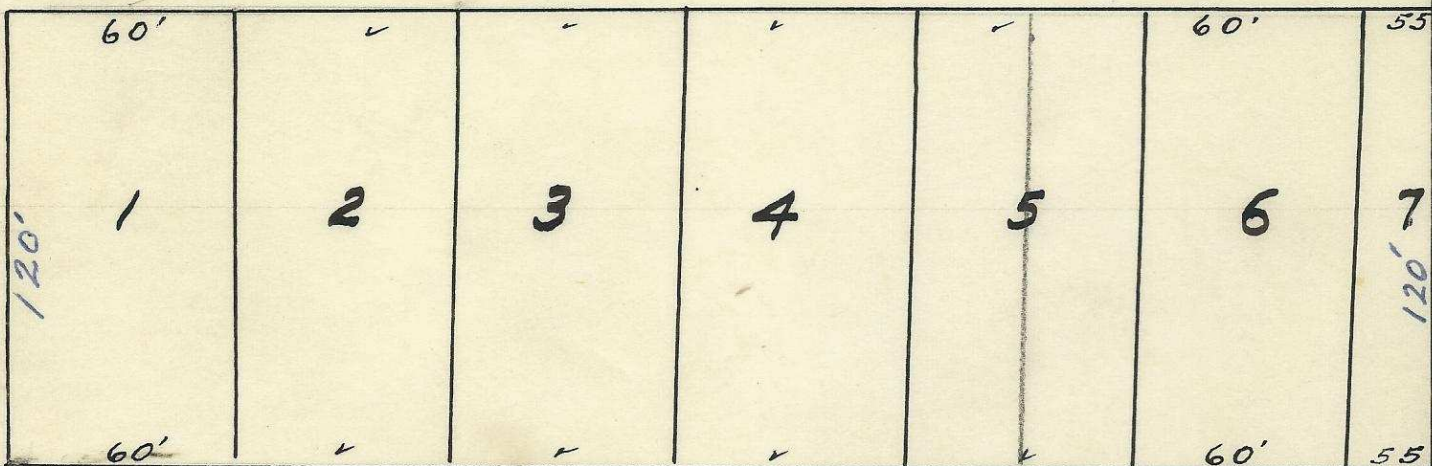


# BRUCE ST

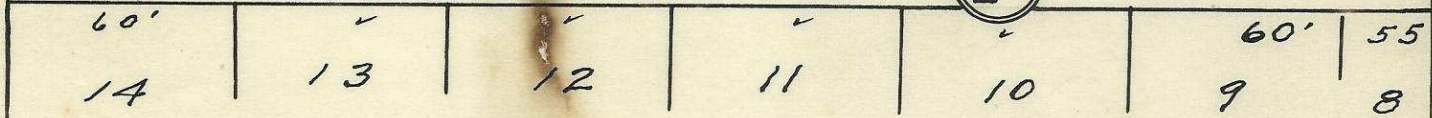
80'

50'

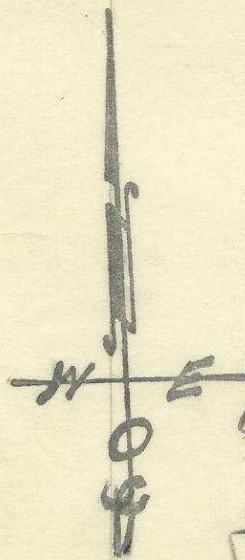


20'

①



WATER



Plat of  
 N. Half of Block 1 of  
 McMorris Addition to  
 City of Weston, Oregon.  
 surveyed, staked & platted July-1954  
 By W. E. O. Criger -  
 Scale: 1" = 50'



4 N 35 22 DC

06-29-Ax

Frank Haleb - 422-S.W. 7<sup>th</sup>

⑥