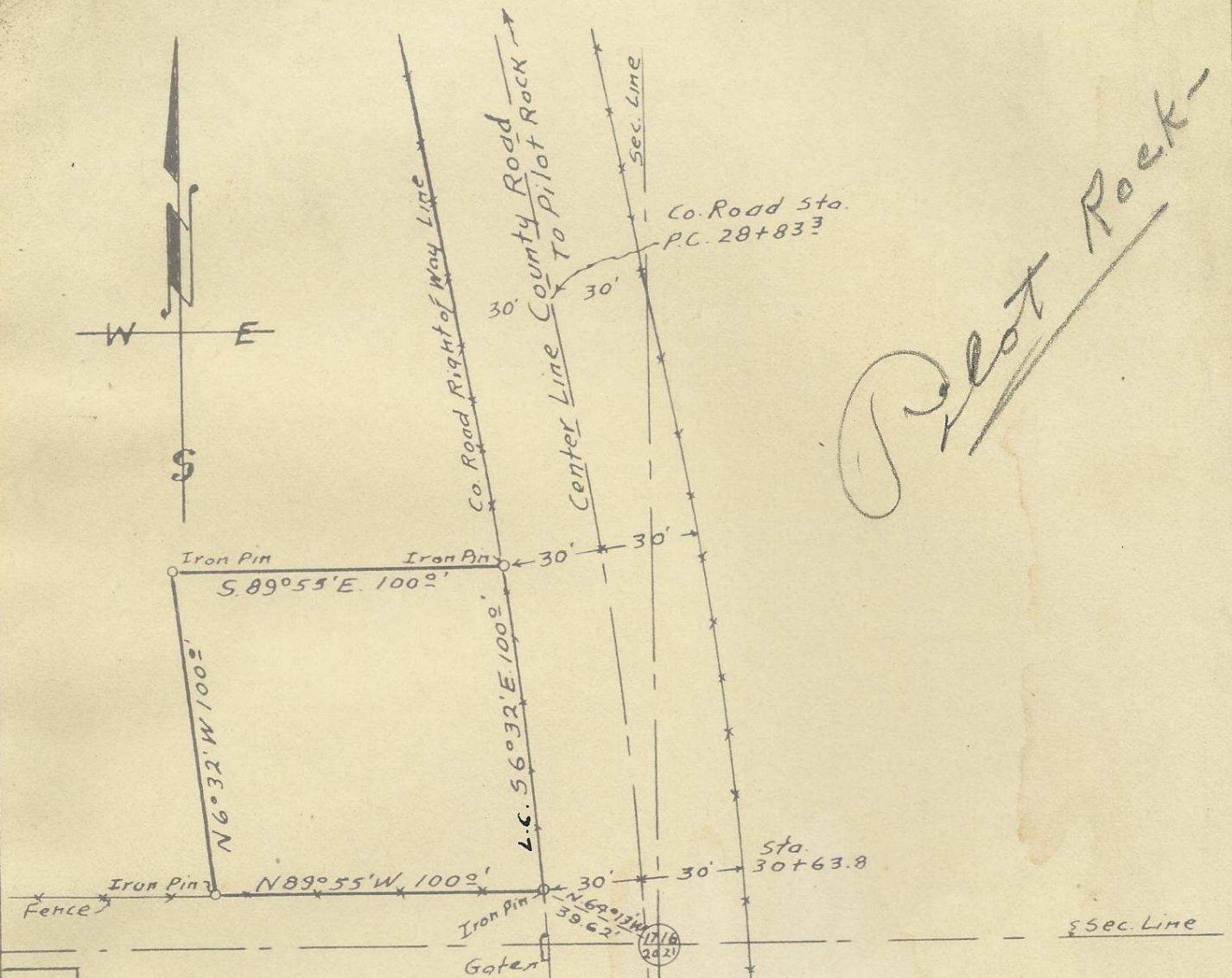


Pilot Rock



Garage



PLAT
 OF
 Descriptive Tract located
 in the S.E. 1/4 of the S.E. 1/4 of
 Section 17 T. 1 S. R. 32 E. W.M.
 Umatilla County, Oregon.
 Surveyed, staked & platted
 August 1950 By H. L. Melton
 Reg. Prof. Engineer, Ore No 1337
 Scale 1" = 50 Feet

H. L. Melton

75 32 17 DB
04-229-Ax

Rox - Pilot Rock. -