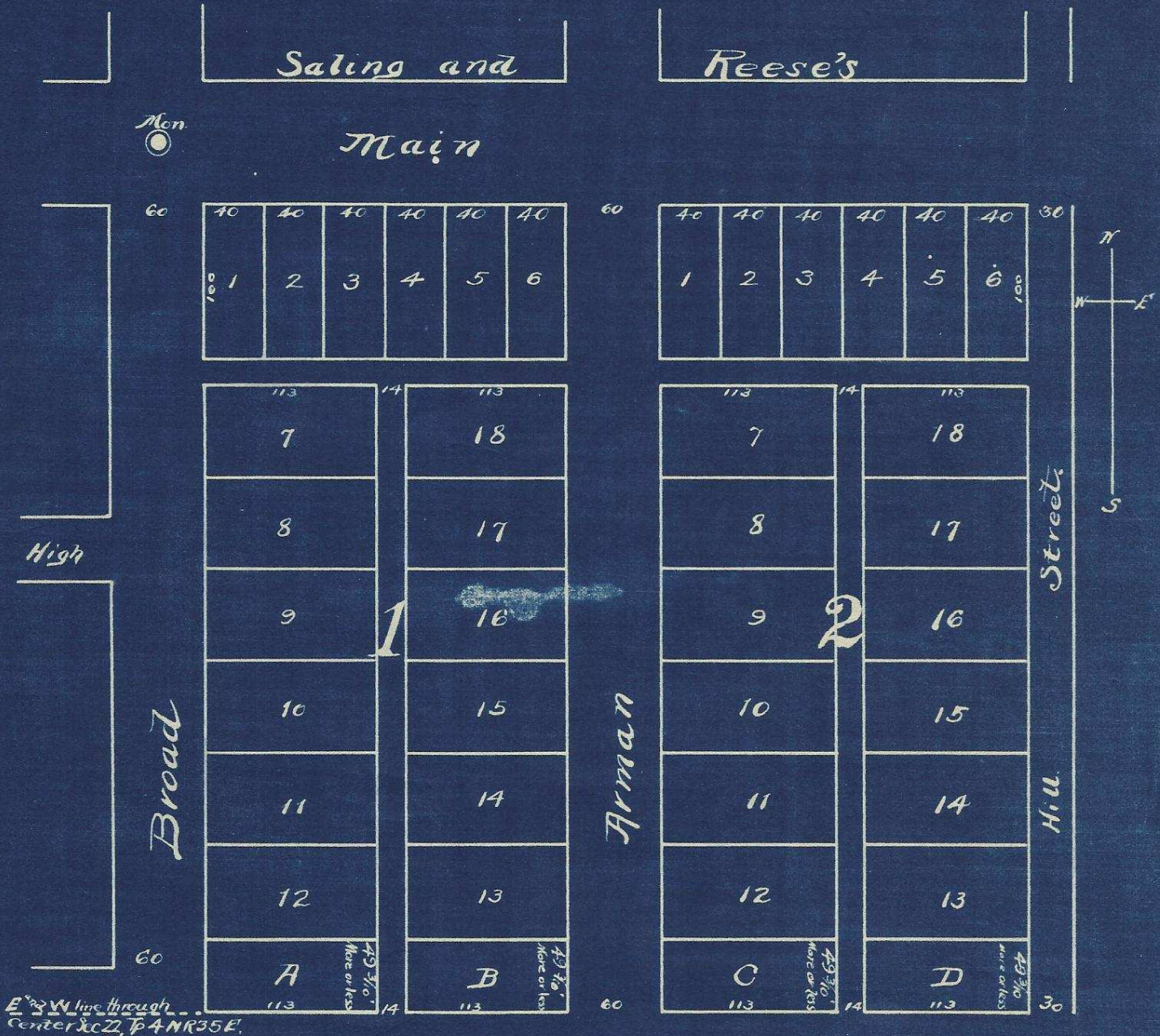


George Hartman's Addition to Weston.

Umatilla County, Oregon.



At the request of the proprietor the measurements were all made on the natural surface of the ground and the figures written on each line indicate the length thereof in feet. Streets, Alleys, Blocks and lots are laid out N & S and E & W and numbered as shown on plat.

I hereby certify that the within is a correct plat of Geo. Hartman's Addition to the town of Weston, Umatilla Co. Oregon, according to the field notes of survey made Sept 26-1882.

Filed Oct 7-1882 at 3 P.M.
Scale 1 in = 100 ft.

Recorded Book H of Deeds page 723.

Hartman & Co.
Register, Or.