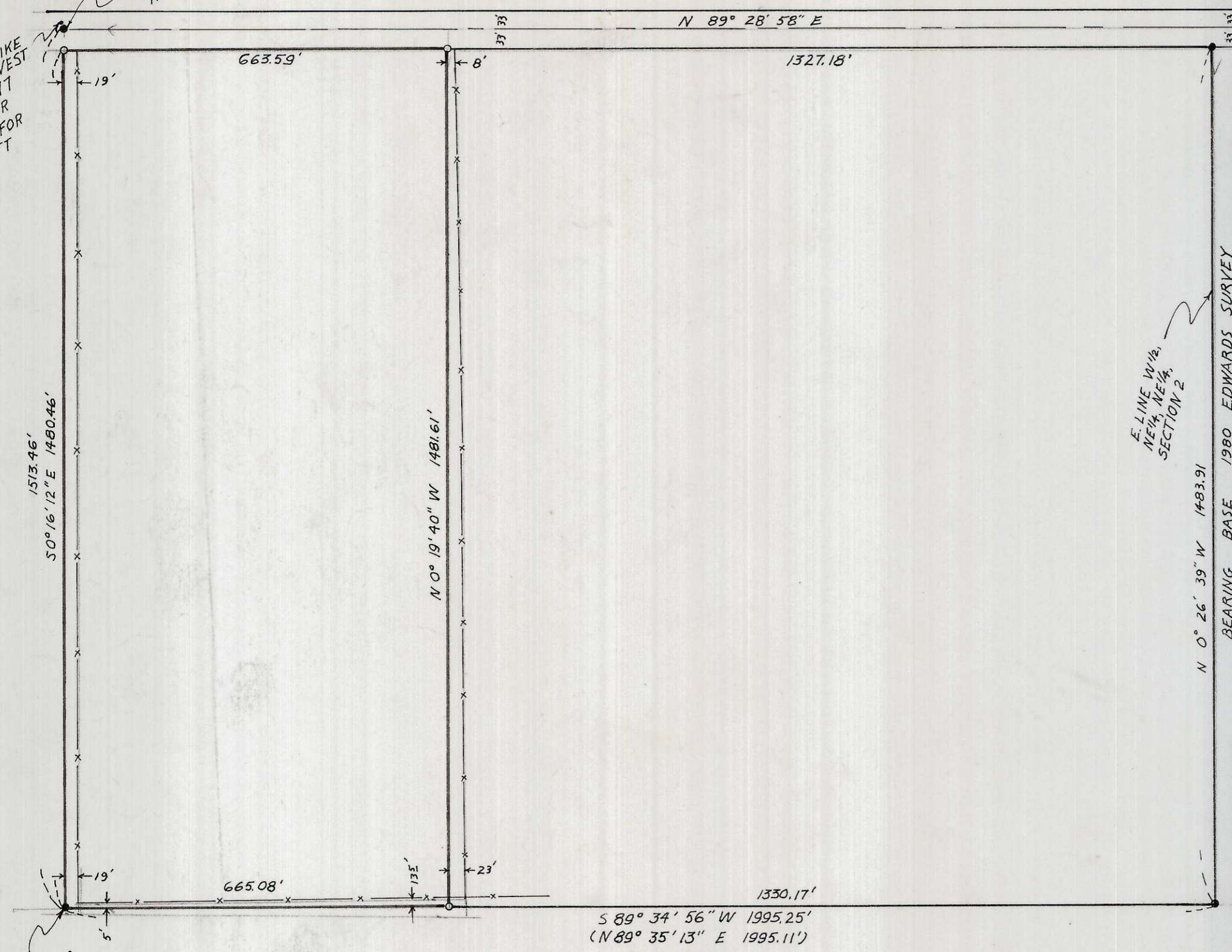


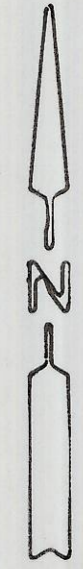
N<sup>1</sup>/<sub>4</sub> CORNER  
Fnd. B.C. 1980  
KRUMBEIN SURVEY

Fnd. R.R. SPIKE  
N 12° 56' WEST  
1.90' 1977  
CRAMMER  
SURVEY FOR  
BAGGETT



← PUNKIN CENTER RD

E. LINE W<sup>1</sup>/<sub>2</sub>,  
NE<sup>1</sup>/<sub>4</sub>, NE<sup>1</sup>/<sub>4</sub>,  
SECTION 2  
BEARING BASE 1980 EDWARDS SURVEY  
For HALLENBECK et al  
N 0° 26' 39\" W 1483.91'



REGISTERED  
PROFESSIONAL  
LAND SURVEYOR

*G. Dennis Edwards*

OREGON  
JULY 16, 1971  
G. DENNIS EDWARDS  
951

**SURVEY FOR: JOHN PAULSON**

LOCATION: W<sup>1</sup>/<sub>2</sub>, NW<sup>1</sup>/<sub>4</sub>, NE<sup>1</sup>/<sub>4</sub>, SEC. 2,  
T4N, R28E, W.M., UMATILLA,  
COUNTY, OREGON

DATE: 11-24-80      SCALE: 1" = 200'  
• MONUMENTS FOUND      (000) OF RECORD  
○ 5/8" IRON RODS SET      JOB #8011239

RECEIVED BY  
Umatilla County Surveyor  
Date 12-80  
Rec'd By BUS  
No. R-183-A

EDWARDS SURVEYING      P.O. BOX 763  
567-3336      HERMISTON, ORE.

R-183-A

Fnd. 1/2" I.P.  
1977 CRAMMER  
SURVEY SW CORNER,  
NW<sup>1</sup>/<sub>4</sub>, NE<sup>1</sup>/<sub>4</sub>, SEC. 2