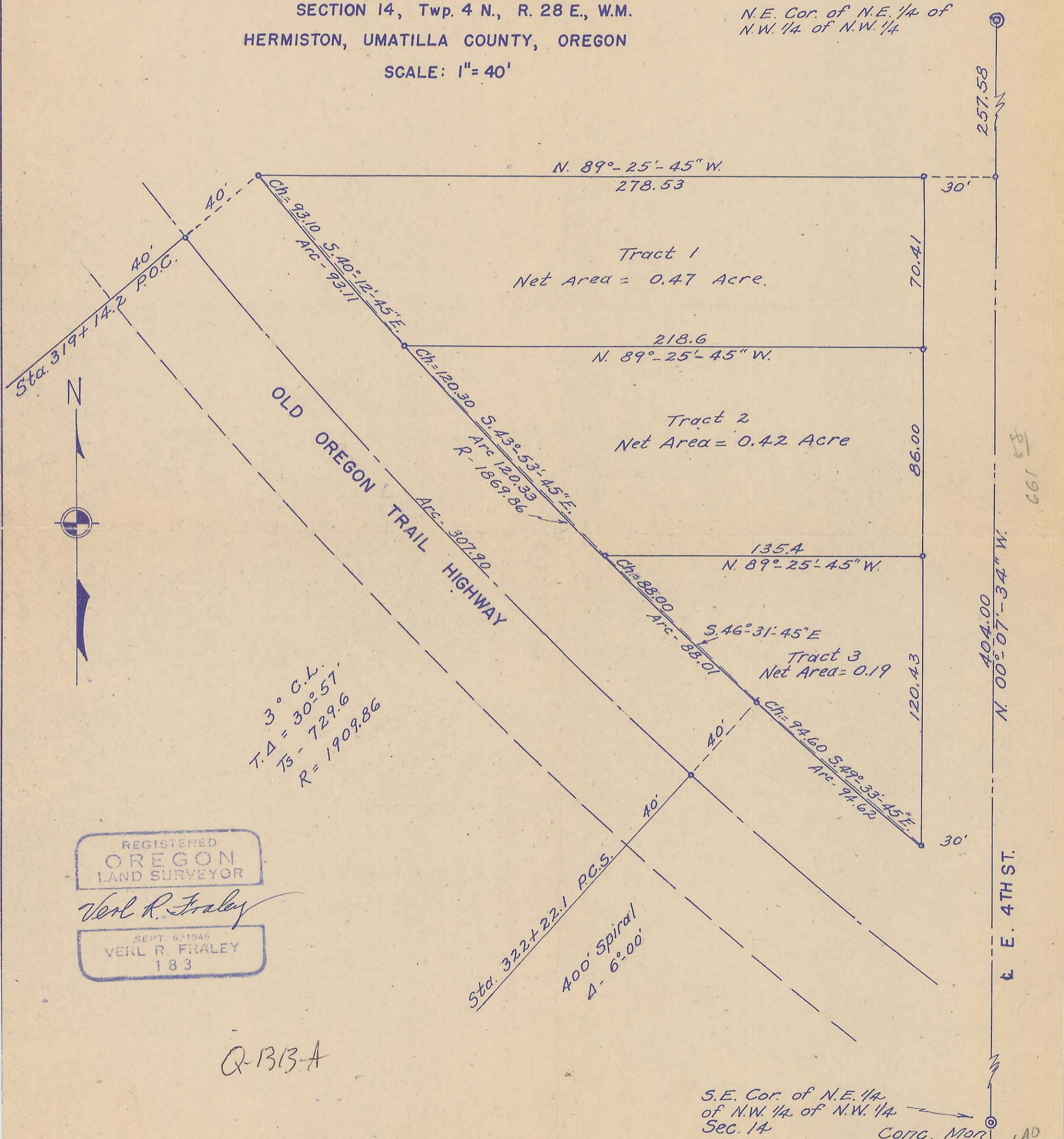


640

TRACTS OF LAND
 IN THE N.E. 1/4 OF THE N.W. 1/4 OF THE N.W. 1/4 OF
 SECTION 14, Twp. 4 N., R. 28 E., W.M.
 HERMISTON, UMATILLA COUNTY, OREGON

SCALE: 1" = 40'

Conc. Mon.
 N.E. Cor. of N.E. 1/4 of
 N.W. 1/4 of N.W. 1/4



3° C.L.
 T.A = 30°-57'
 Ts = 729.6
 R = 1909.86

REGISTERED
OREGON
 LAND SURVEYOR

Verl R. Fraley

SEPT. 6, 1946
VERL R. FRALEY
 183

Q-1313-A

S.E. Cor. of N.E. 1/4
 of N.W. 1/4 of N.W. 1/4
 Sec. 14
 Conc. Mon. 640

NO repl available

Q-1313-A