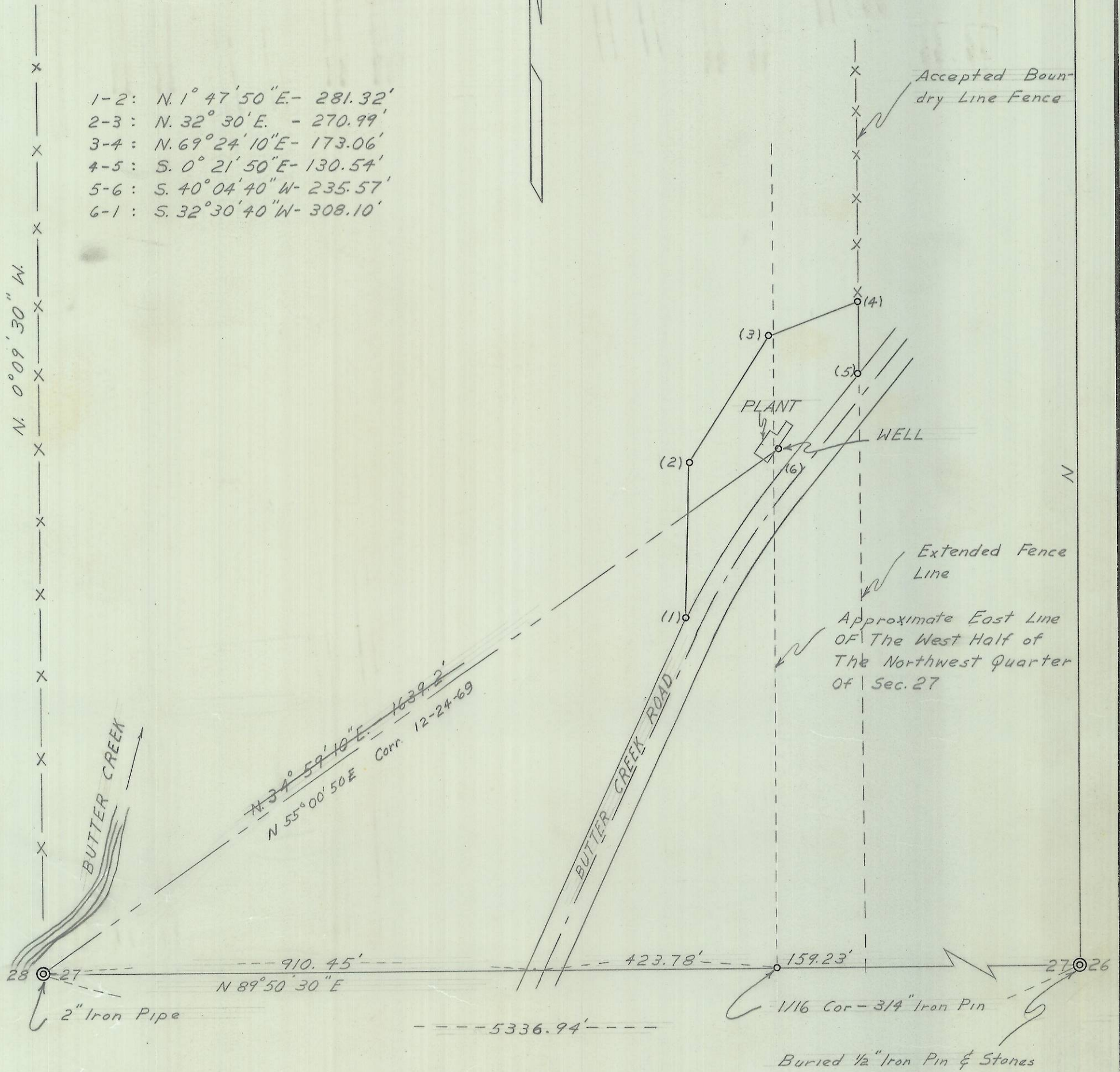


- 1-2: N. 1° 47' 50" E - 281.32'
- 2-3: N. 32° 30' E - 270.99'
- 3-4: N. 69° 24' 10" E - 173.06'
- 4-5: S. 0° 21' 50" E - 130.54'
- 5-6: S. 40° 04' 40" W - 235.57'
- 6-1: S. 32° 30' 40" W - 308.10'



REGISTERED  
**OREGON**  
 LAND SURVEYOR  
*Wayne O. Harris*  
 MAY 6, 1955  
 WAYNE O. HARRIS  
 346

HAYES AND HARRIS			
Survey For BUTTER CREEK PELLETS, INC. NW $\frac{1}{4}$ , Section 27 T. 2 N., R. 27 E., W.M.			
Scale	Date	Drn. By	Drng. No.
1"-200	1/22/58	WOH	58-63A

Q-1300-A

Q-1300-A