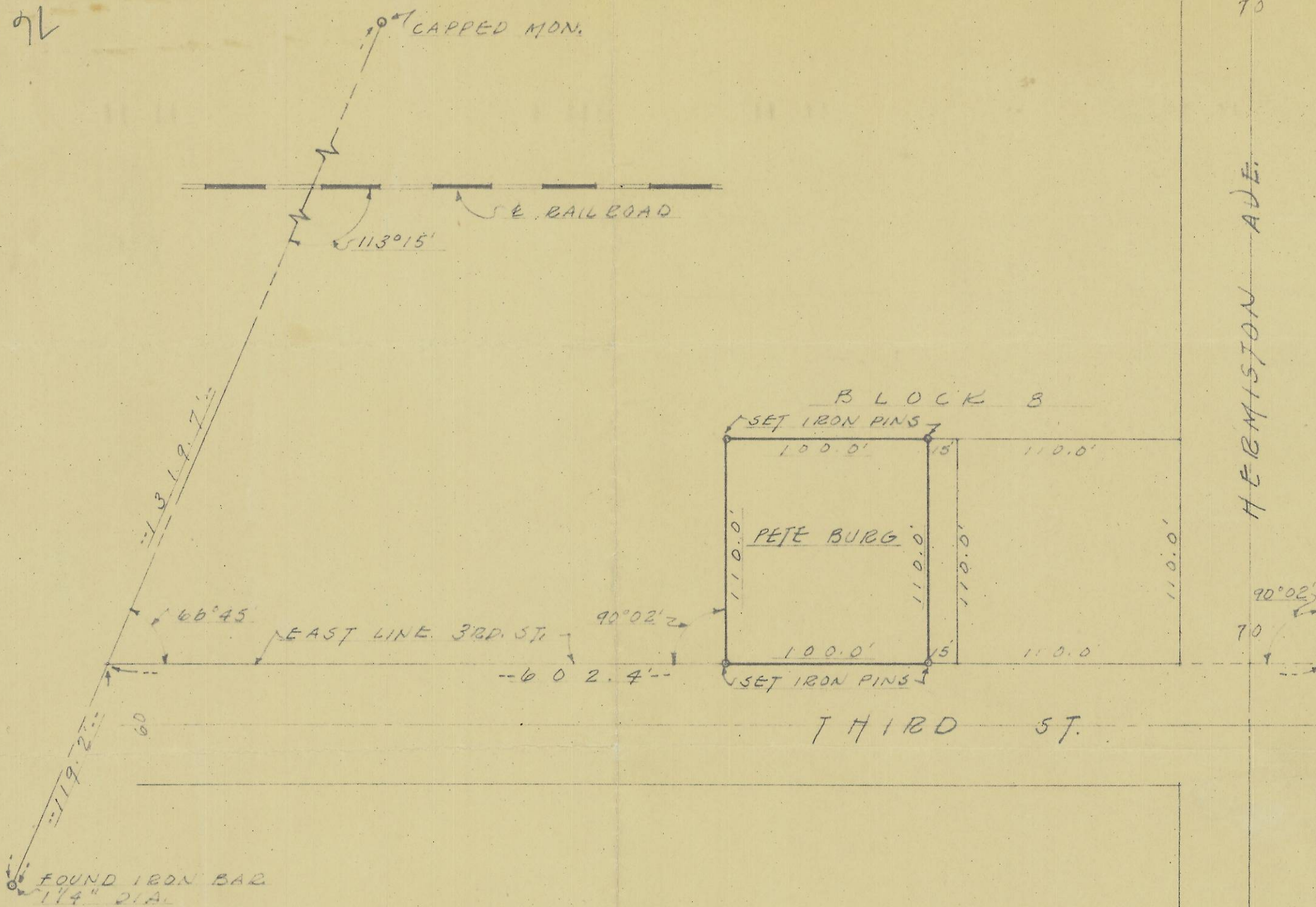


92



70

HERMISTON AVE.

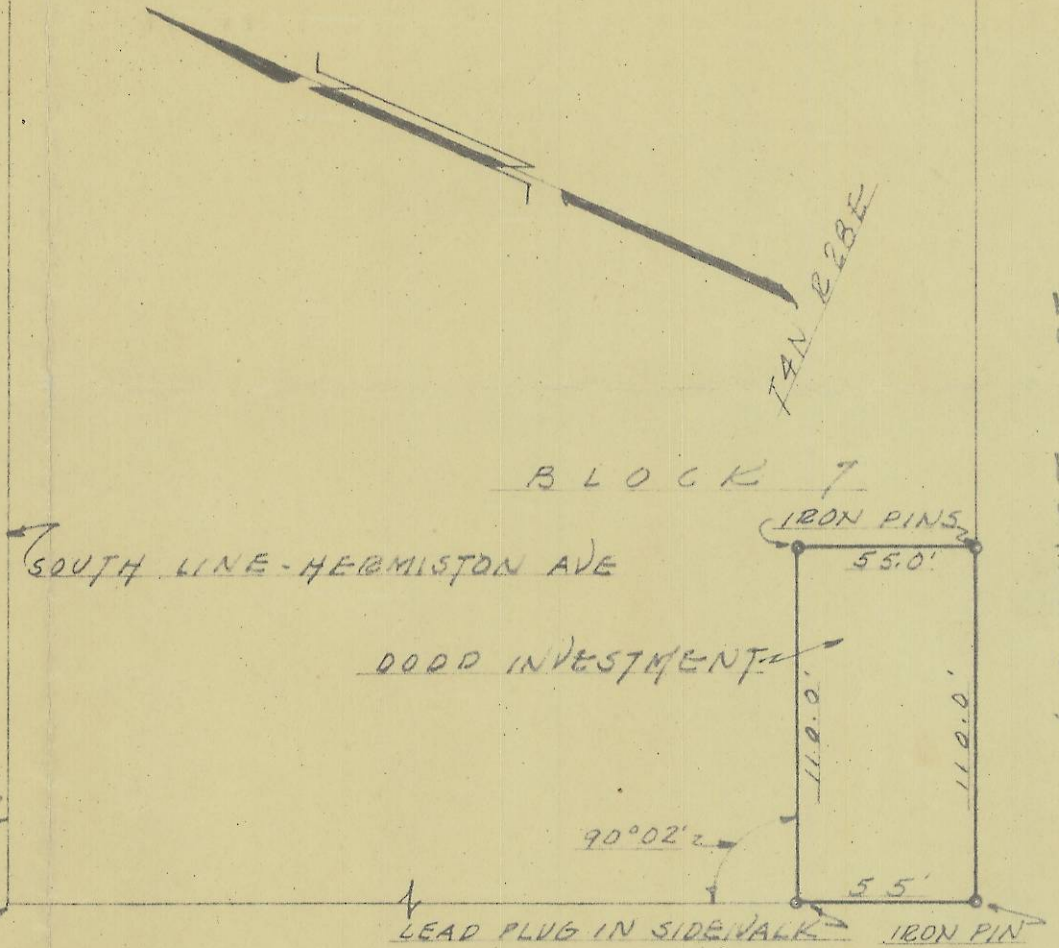
90°02'2"

70

60

LOGUST ST.

60



PETE BURG # 493 - LOTS 10-11-12-13 BLK. 8  
 DODD INVESTMENT # 494 LOTS 16-17 BLK. 7  
 ORIGINAL TOWN OF HERMISTON  
 OREGON

SCALE - 1" = 60.0'

SE 10

**C. H. Storms & Associates**  
 CONSULTING ENGINEERS — ARCHITECTS  
 304 DENNY BUILDING TELEPHONE 4170 WALLA WALLA, WASH.

Mechanical	A SURVEY FOR
Structural	PETE BURG # 493
Hydraulic	DODD INVESTMENT # 494
Sanitary	
Designs	
Land Surveys	
House Plans	Date: 3-1-48
Blue Prints	Drawn By: J. Q. B.
Estimates	Checked By: [Signature]
	493 494 SHEET OF

Q-612-A ORIG

76