

MAP OF  
L.A. MOORE PROPERTY  
IN N. 1/2 OF S.E. 1/4 SEC. 3  
T. 4 N., R. 28 E., W.M.

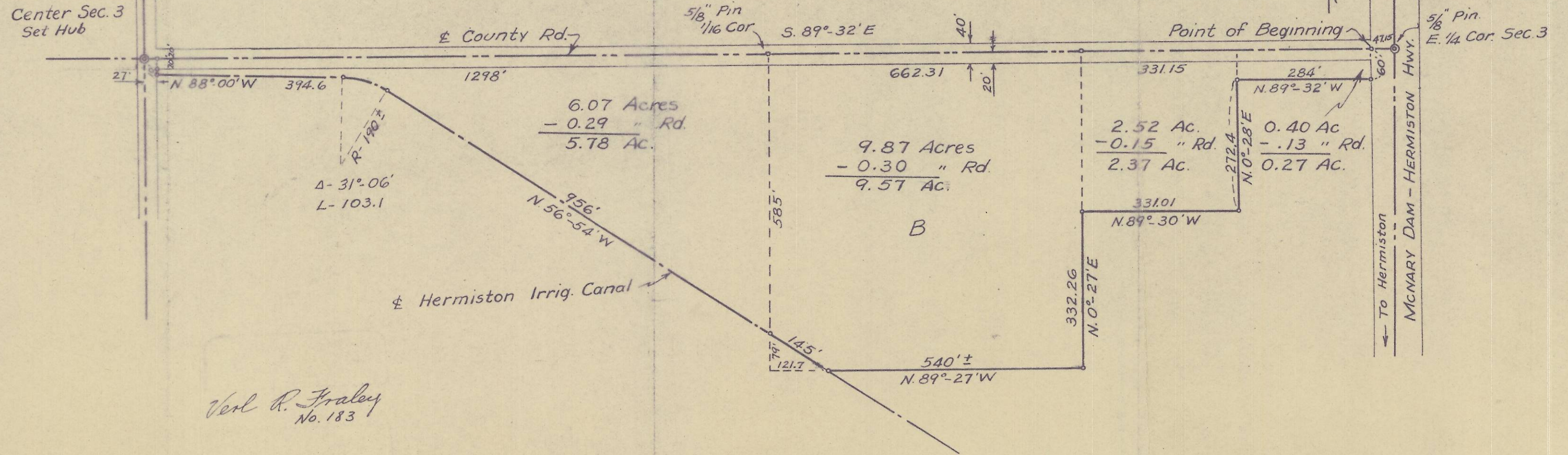
NEAR HERMISTON, UMATILLA CO., ORE.

SCALE: 1" = 200'

SE (3)

OR 19  
Q-564-A

Center Sec. 3  
Set Hub



Verl R. Fraley  
No. 183