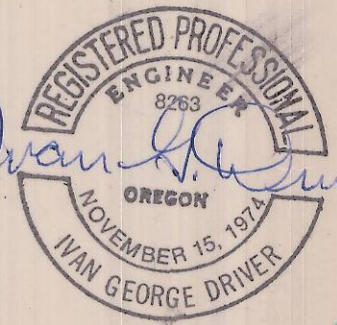
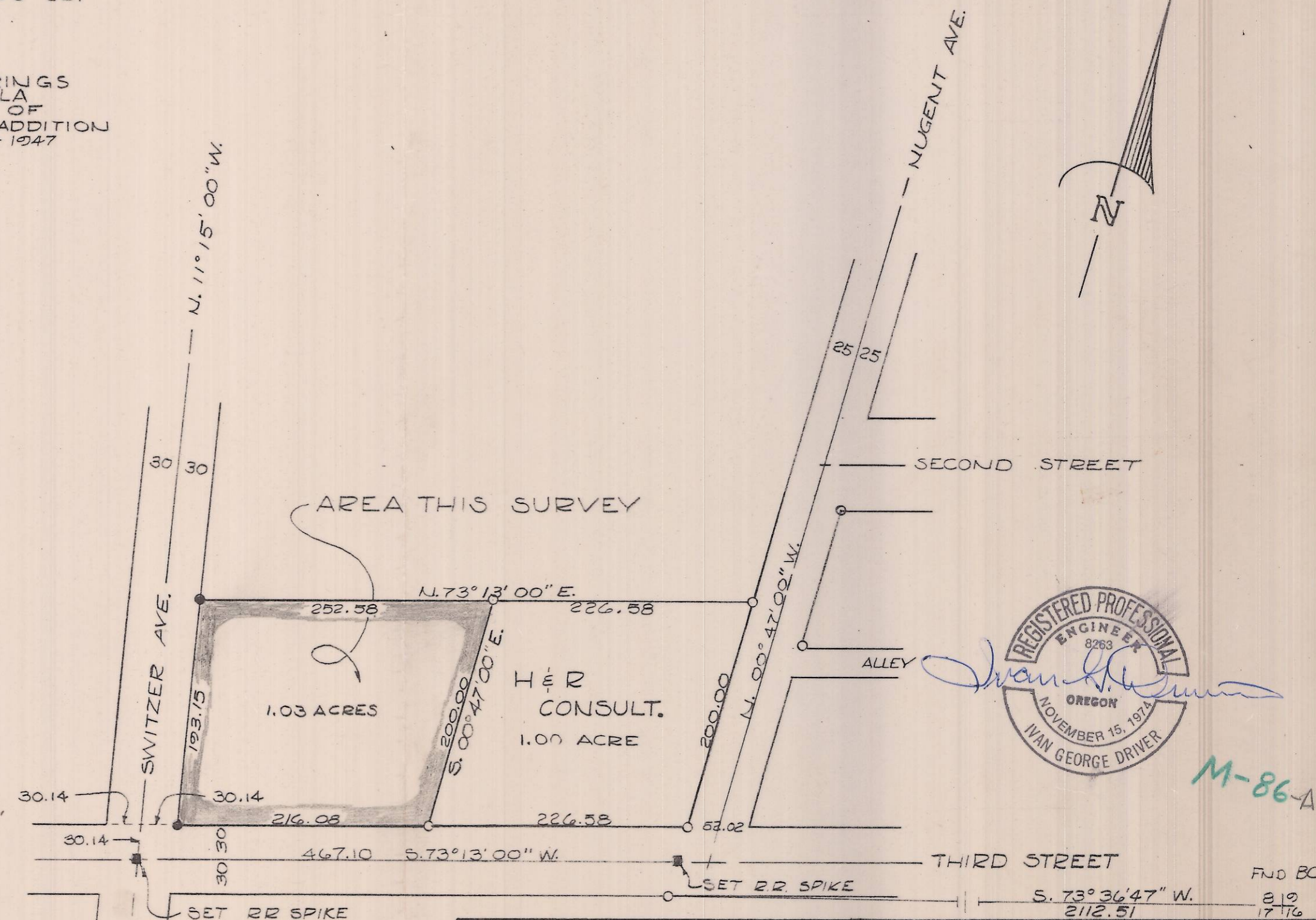


LEGEND

- DENOTES PIN OR PIPE FND
- DENOTES 1/2" IRON PINS SET

NOTE:

BEARINGS ARE TRUE BEARINGS AND ARE BASED ON UMATILLA COUNTY SURVEY RECORDS OF WORK DONE FOR McNARY ADDITION BY FRANK D. TALBOT P.E. - 1947



Ivan George Driver

M-86-A

SURVEY FOR McCLANNAHAN PORT OF UMATILLA SITUATED IN NW 1/4, NE 1/4 SECTION 17, T.5N., R.28E. W.M.		WAYNE HARRIS CO. INC.		
		ENGINEERS-SURVEYORS		PENDLETON, ORE
SCALE	DATE	DWN	CHK	DWG. NO
1"=100'	5-31-77	ID	ID	77-10-HP

COUNTY SURVEYOR'S COPY!

M-86-A