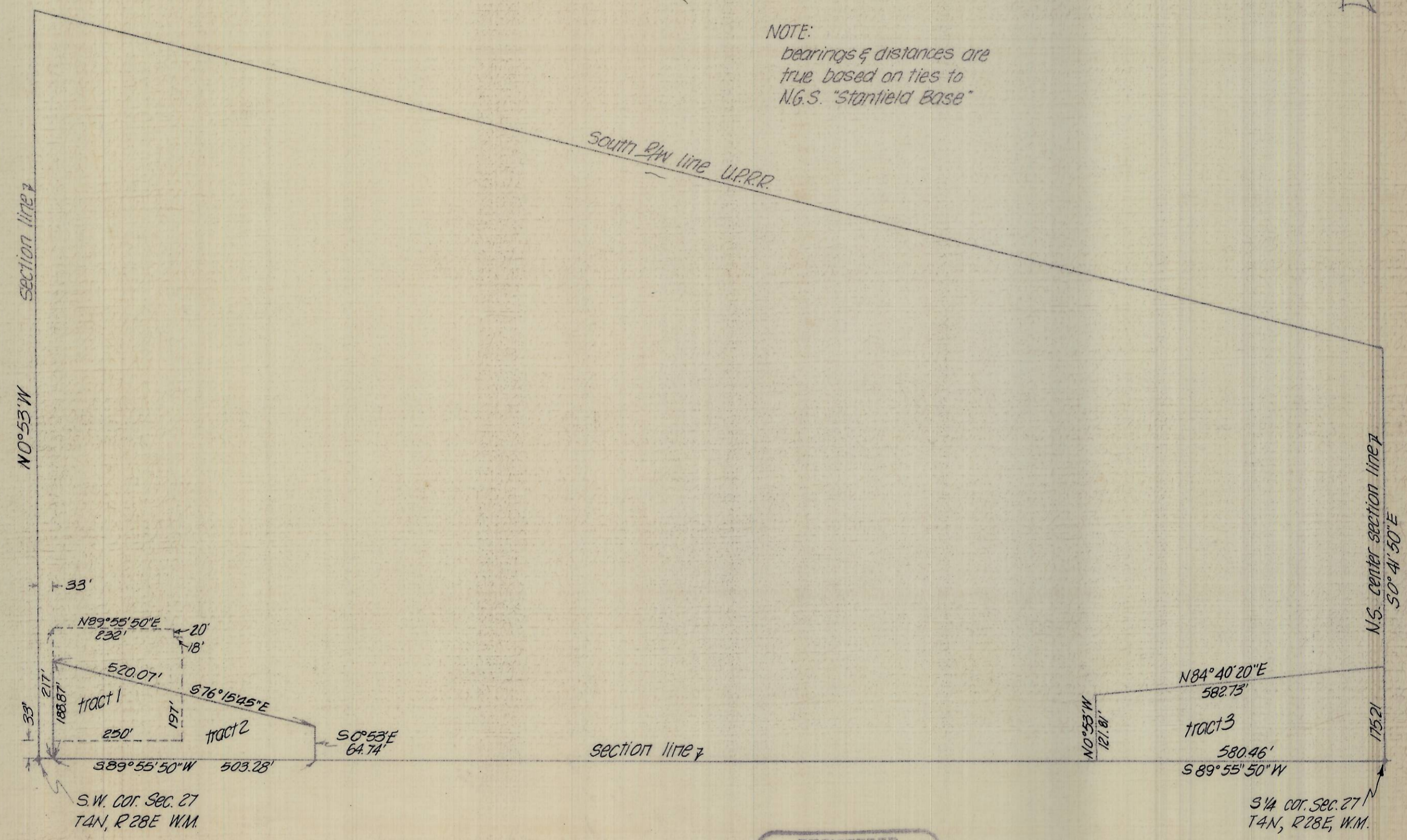




NOTE:  
bearings & distances are  
true based on ties to  
N.G.S. "Stanfield Base"



33'  
N89°55'50"E  
232'  
20'  
18'  
520.07'  
676°54'5"E  
197'  
250'  
188.87'  
217'  
33'  
389°55'50"W  
503.28'  
S0°53'E  
64.74'  
S.W. cor. Sec. 27  
T4N, R28E WM.

N84°40'20"E  
582.73'  
175.21'  
N0°53'W  
121.81'  
580.46'  
S89°55'50"W  
175.21'  
3/4 cor. Sec. 27  
T4N, R28E, WM.

REGISTERED  
PROFESSIONAL  
LAND SURVEYOR  
*David H. Krumbain*  
OREGON  
JULY 17, 1970  
DAVID H. KRUMBAIN  
933

REVISED 11 MAY 1976	
<b>KRUMBAIN ENGINEERING CO.</b> ENGINEERS - SURVEYORS - PLANNERS 216 S.E. 1st, Pendleton, Oregon	
J.R. SIMPLOT CO.	
SCALE 1" = 200'	DATE MAY 3, 1976
DRN. BY J.R.S.	CKD. BY D.H.K.
DRNG. NO. 76-228	

L-41

L-41-A