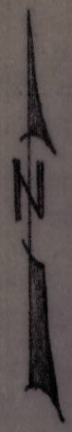
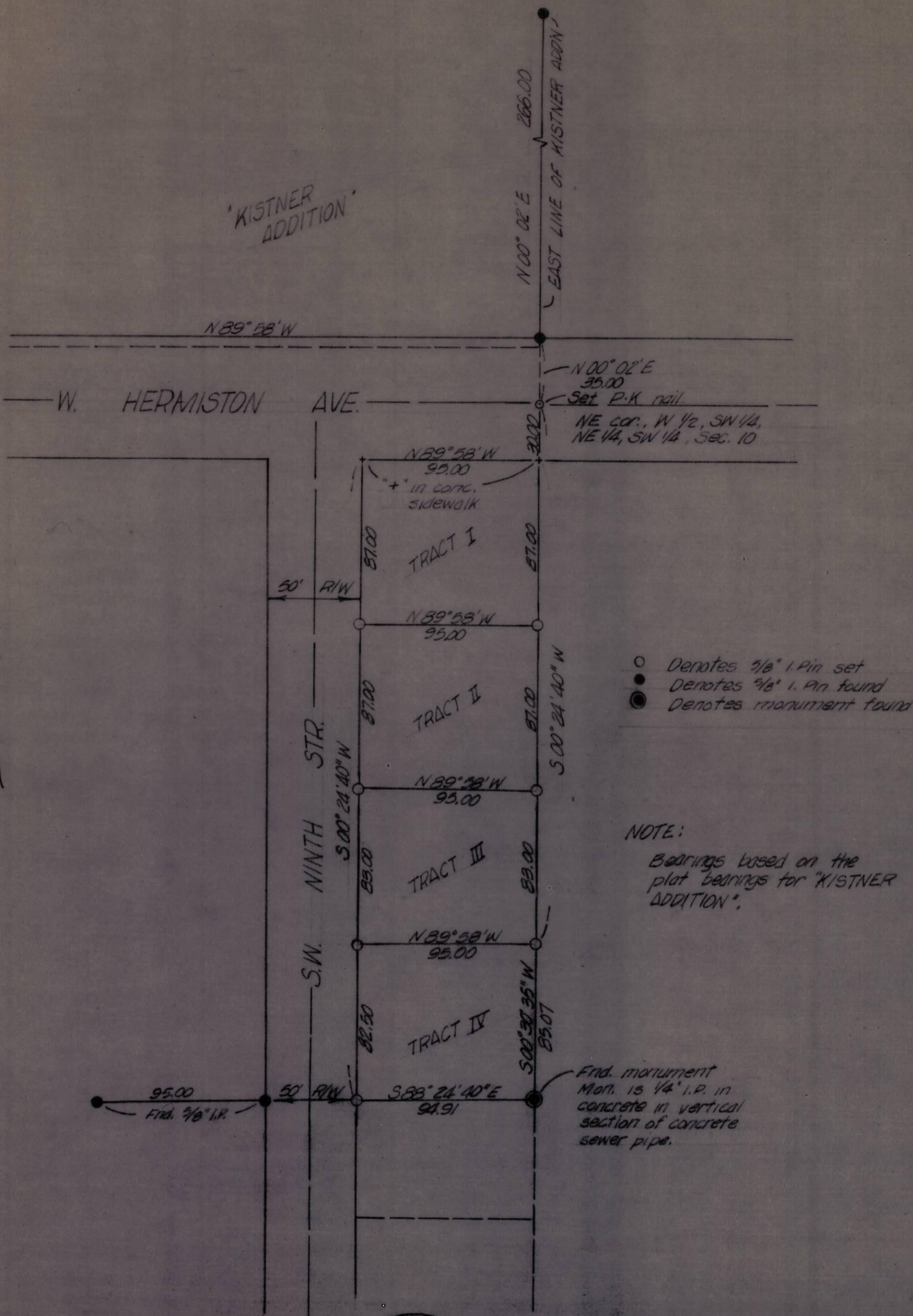


K-64-A

KISTNER ADDITION



- Denotes 3/8" i. Pin set
- Denotes 3/8" i. Pin found
- ⊙ Denotes monument found

NOTE:
Bearings based on the plat bearings for "KISTNER ADDITION".

K-64-A



KRUMBEIN ENGINEERING CO.		SCALE 1" = 20'
ENGINEERS - SURVEYORS - PLANNERS 216 S.E. 1st, Pendleton, Oregon		DATE 4-4-76
Survey in the NE 1/4, SW 1/4, S10, T4N, R20E for BOB KETRENOS Hermiston, Oregon		DRN. BY J.H.B.
		CHK. BY D.H.K.
		DRNG. NO. 76-223

K-64