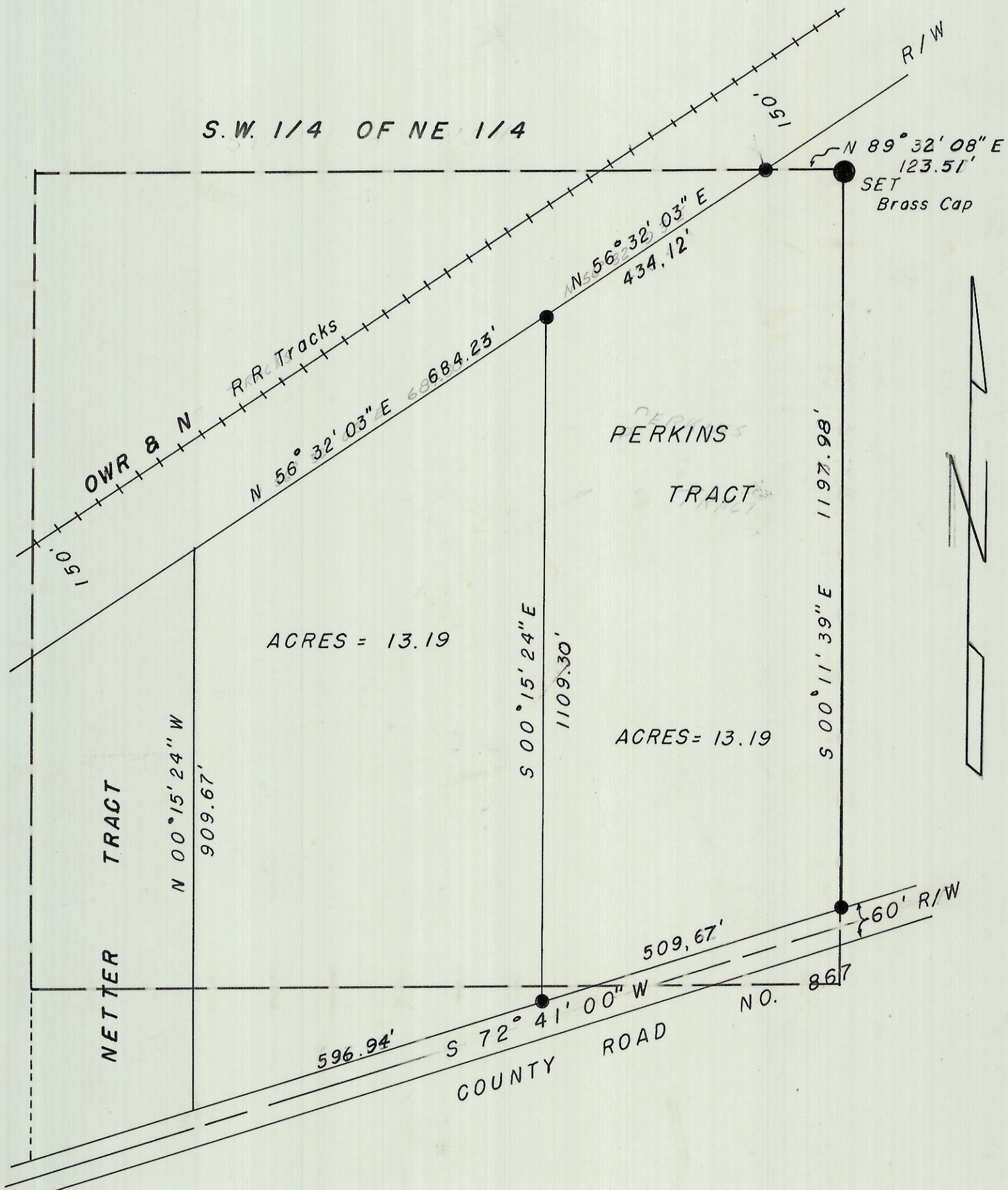
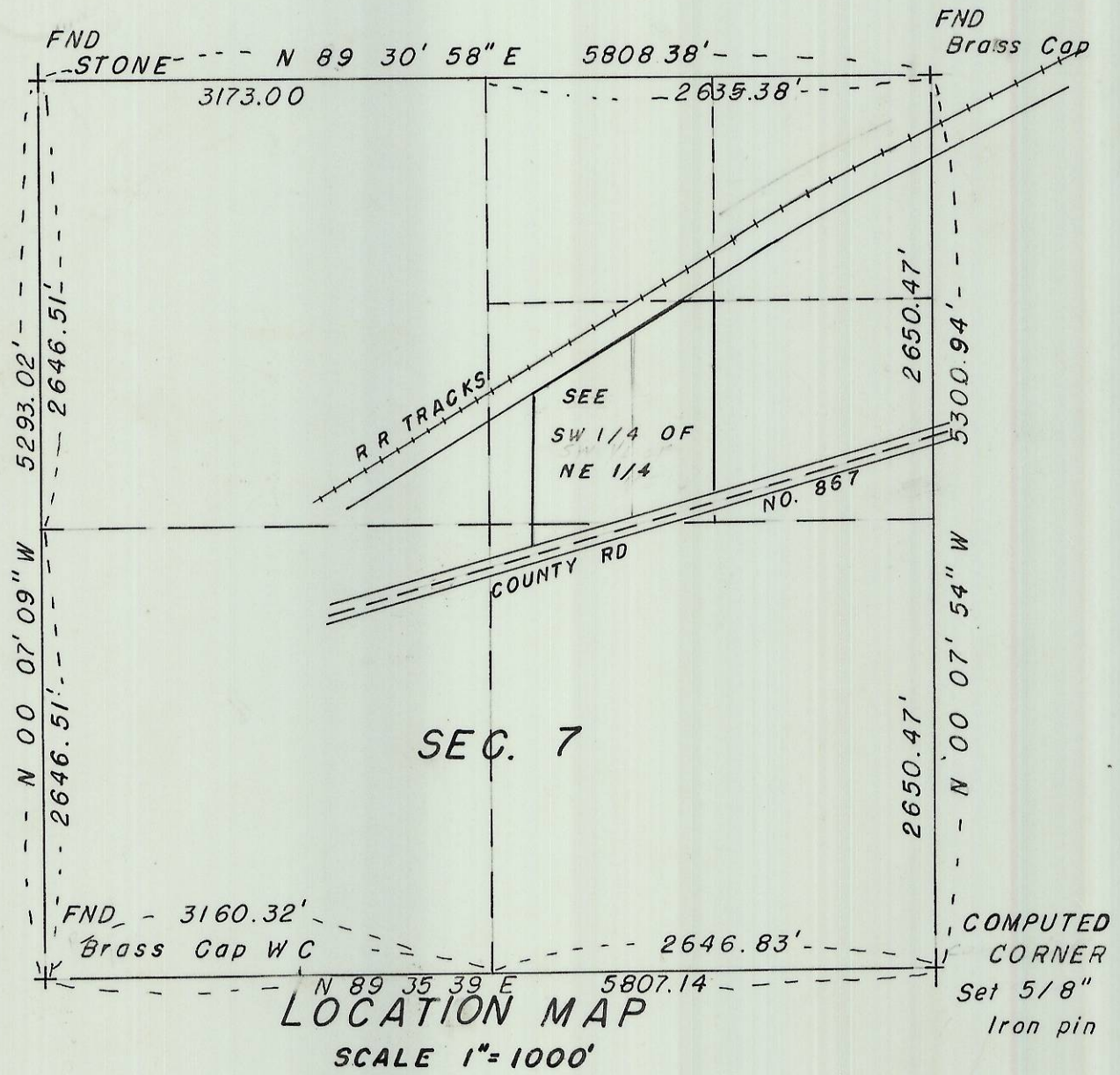


S.W. 1/4 OF NE 1/4



ACRES = 13.19

ACRES = 13.19



LOCATION MAP
SCALE 1"=1000'

NOTE

Center line of County Road No. 867 was established by use of existing center line. Bearings are based upon ties to N.O.S. STATION "HERMISTON" and "HERMAIR". Those shown are true.

LEGEND

● Denotes 5/8" Iron pin set

J-104-A

SURVEY FOR PERKINS		WAYNE HARRIS CO. INC. ENGINEERS - SURVEYORS PENDLETON, ORE.		
PARCEL IN SW. 1/4 OF NE. 1/4 SEC. 7 T. 4 N, R 29 E. W.M.		SCALE 1"=200'	DRN BY <i>TH</i>	DRNG NO.
		DATE 3-3-75	CKD BY <i>DAK</i>	75-313A