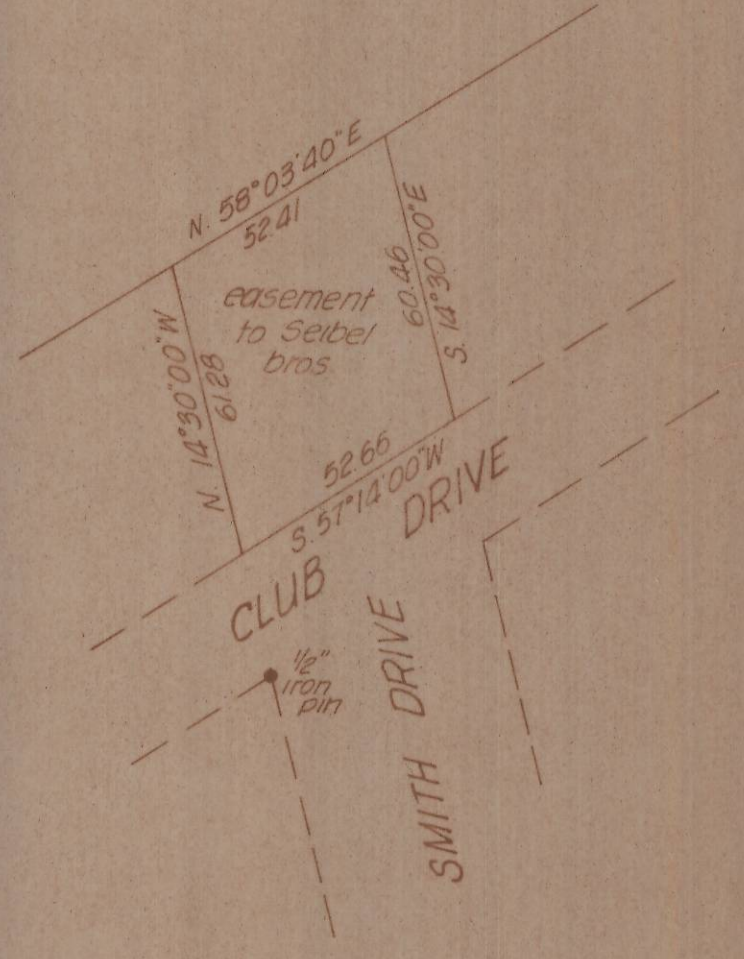


NOTE
Bearings are true bearings.

LEGEND

- Denotes points found
- Denotes 1/8" iron pins set

scale: 1"=200'



EASEMENT DETAIL
scale: 1"=40'



J-96-A

Survey for the CITY OF ECHO of a parcel situated in the NE 1/4 of Section 16, T.3N., R.29E. W.M.				
WAYNE HARRIS CO. INC. J-96-A ENGINEERS, SURVEYORS PENDLETON, OREGON				
SCALE	as noted	DRN BY	C.T.P.	DRNG NO.
DATE	4/23/75	CKD BY	D.H.K.	75-320A