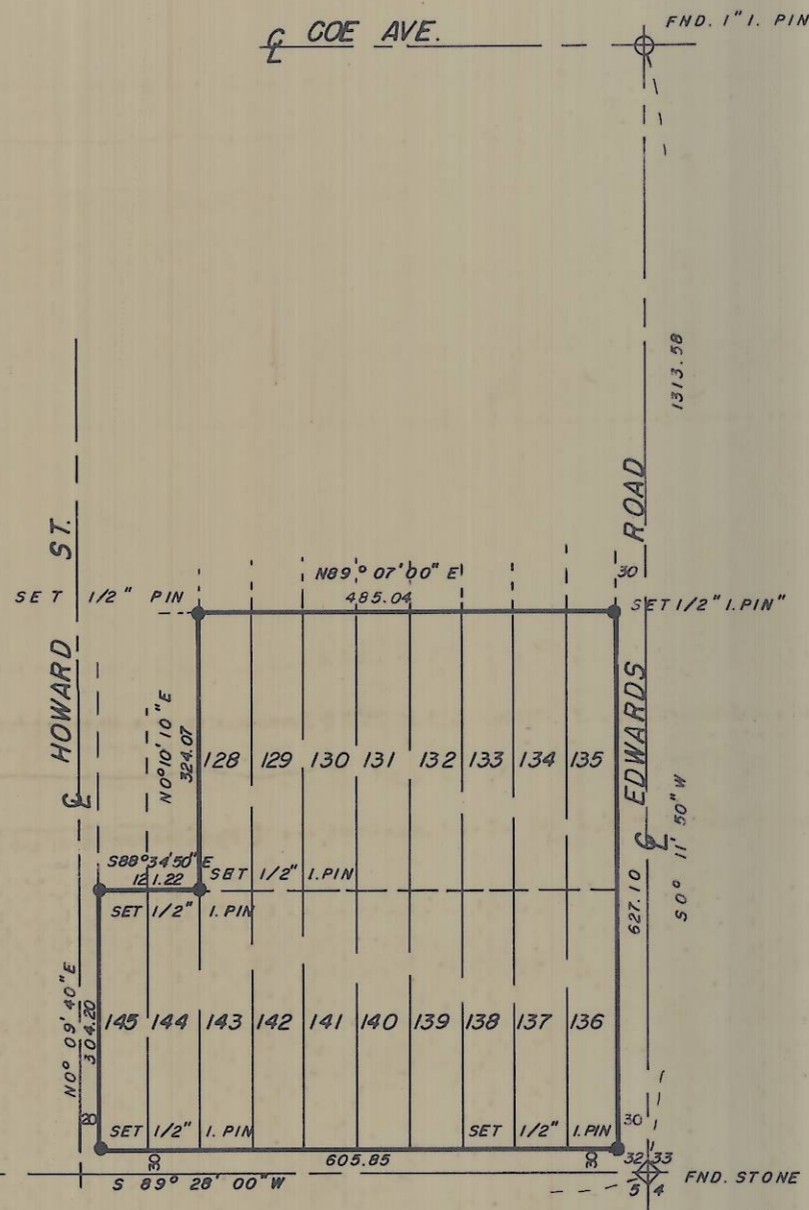


32 1/4 COR.
FND. BRASS CAP
5

2623.20

BALL AVE.



NOTE: DISTANCES ARE FROM ORIGINAL
PLAT OF STANFIELD ORCHARD
OUTLOTS

BEARINGS ARE BASED UPON
TIES TO N.G.S. STATION "STANFIELD
E.B." THOSE SHOWN ARE TRUE.

REGISTERED
PROFESSIONAL
LAND SURVEYOR
David N. Krumben
OREGON
DAVID H. KRUMBEIN
933

4N29 32.DD

I-30-A

SURVEY FOR
LEO REUBER, LOTS 128 THROUGH 145,
STANFIELD ORCHARD OUTLOTS, STANFIELD, ORE.

WAYNE HARRIS CO. INC

ENGINEERS SURVEYORS PENDLETON OREGON

SCALE	1" = 150'	DRN. BY	D.E.L.	DRNG. NO.
DATE	7/22/74	CKD. BY	DNK	74-283A

I-30-A