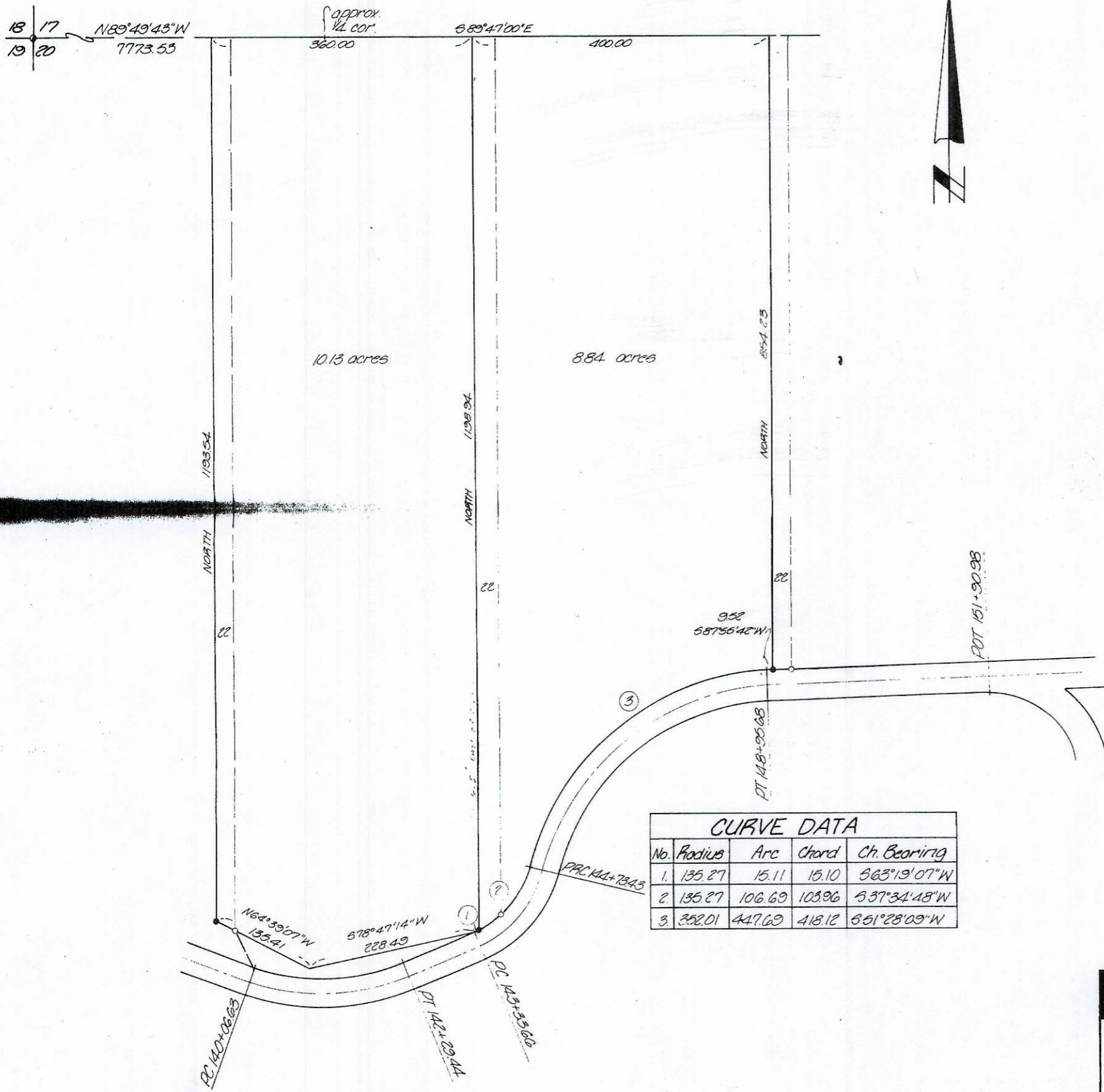


NARRATIVE:



CURVE DATA				
No.	Radius	Arc	Chord	Ch. Bearing
1.	135.27	15.11	15.10	563°19'07"W
2.	135.27	106.69	103.96	537°34'48"W
3.	352.01	447.69	418.12	651°28'09"W

RECEIVED BY
 Umatilla County Surveyor
 Date: 4/17/2012
 Rec'd By: Matt Kenny
 No.: 12-043-A

- denotes set 3/8" x 30" iron pin with aluminum cap stamped PLS 933
- denotes find 3/8" x 30" iron pin with aluminum cap stamped PLS 933
- denotes find 1 1/2" pipe

KRUMBEIN ENGINEERING LTD. ENGINEERS - SURVEYORS - PLANNERS 361 S.E. Second Pendleton, Oregon	Scale 1"=100'	Drn. By MLD	Drng. No. 84-46C	Revision 1
	Date 8-14-84	Ckd. By DHS	Job No. 84-95	Revision 2
Survey for LODMELL Section 21, T6N, R38E, W.M.				