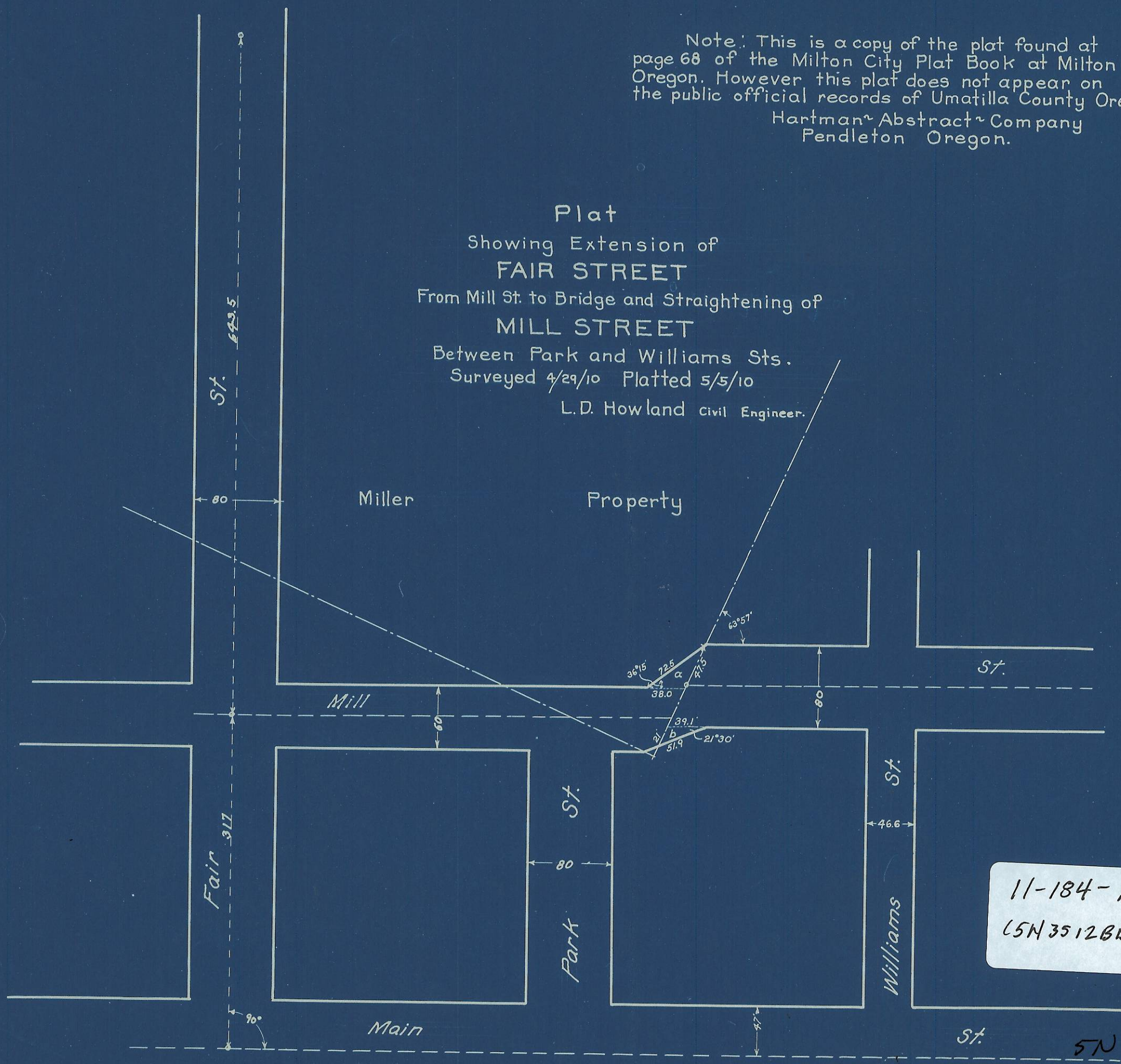


Note: This is a copy of the plat found at page 68 of the Milton City Plat Book at Milton Oregon. However this plat does not appear on the public official records of Umatilla County Oregon.
 Hartman Abstract Company
 Pendleton Oregon.

Plat
 Showing Extension of
FAIR STREET
 From Mill St. to Bridge and Straightening of
MILL STREET
 Between Park and Williams Sts.
 Surveyed 4/29/10 Platted 5/5/10
 L.D. Howland Civil Engineer.



11-184-A
 (5N3512BD)

5N3512BD