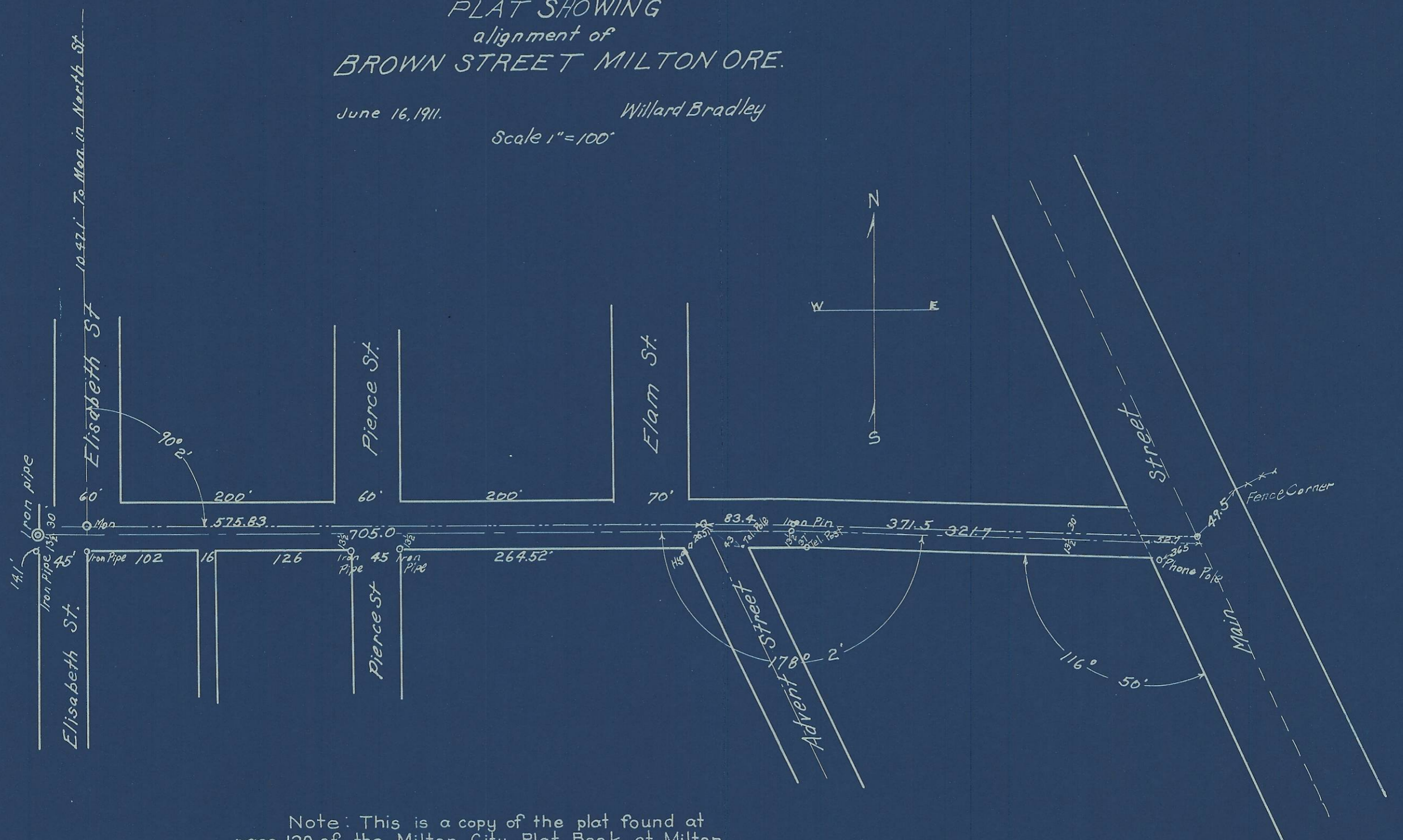


PLAT SHOWING alignment of BROWN STREET MILTON ORE.

June 16, 1911. Willard Bradley
Scale 1"=100'



Note: This is a copy of the plat found at page 120 of the Milton City Plat Book at Milton Oregon. However this plat does not appear on the public official records of Umatilla County Oregon.
Hartman Abstract Company
Pendleton Oregon.

11-150-A
(5N 35 12 BB)

5N35 12BB