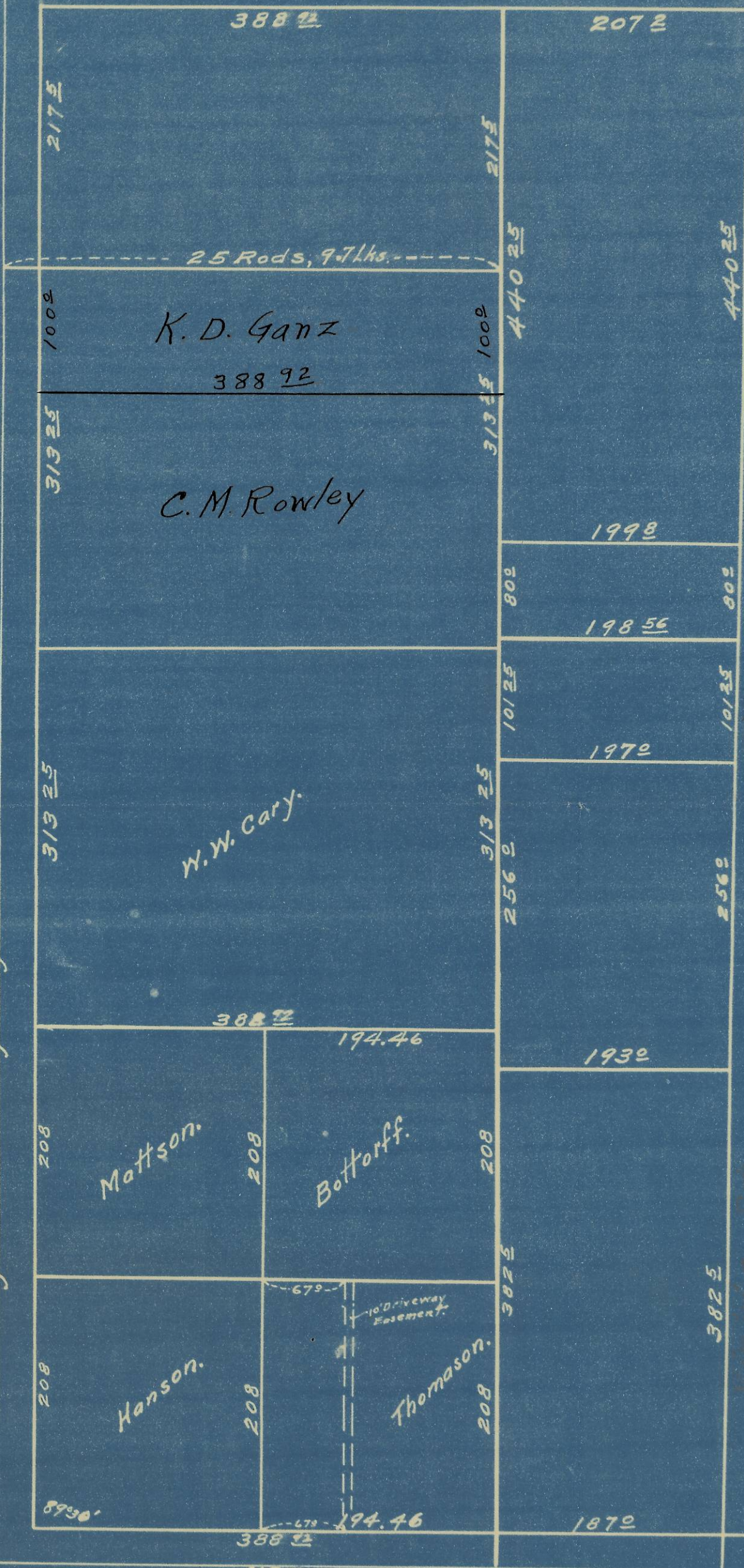


Oregon State Highway 1072.5 (6.5 Rods.)

S.W. Corner  
N.W. & N.E. Sec. 2



Map Showing  
a portion of the N.W. 1/4 of N.E. 1/4  
of Section 2, T. 5N., R. 35 E., W. 1M.  
in City of Freewater, Oregon.  
Scale - 1 inch = 10 Feet.  
Surveyed Jan. 1945.  
By W. E. O. Criger, C. E.

50352 AB  
08-13-A