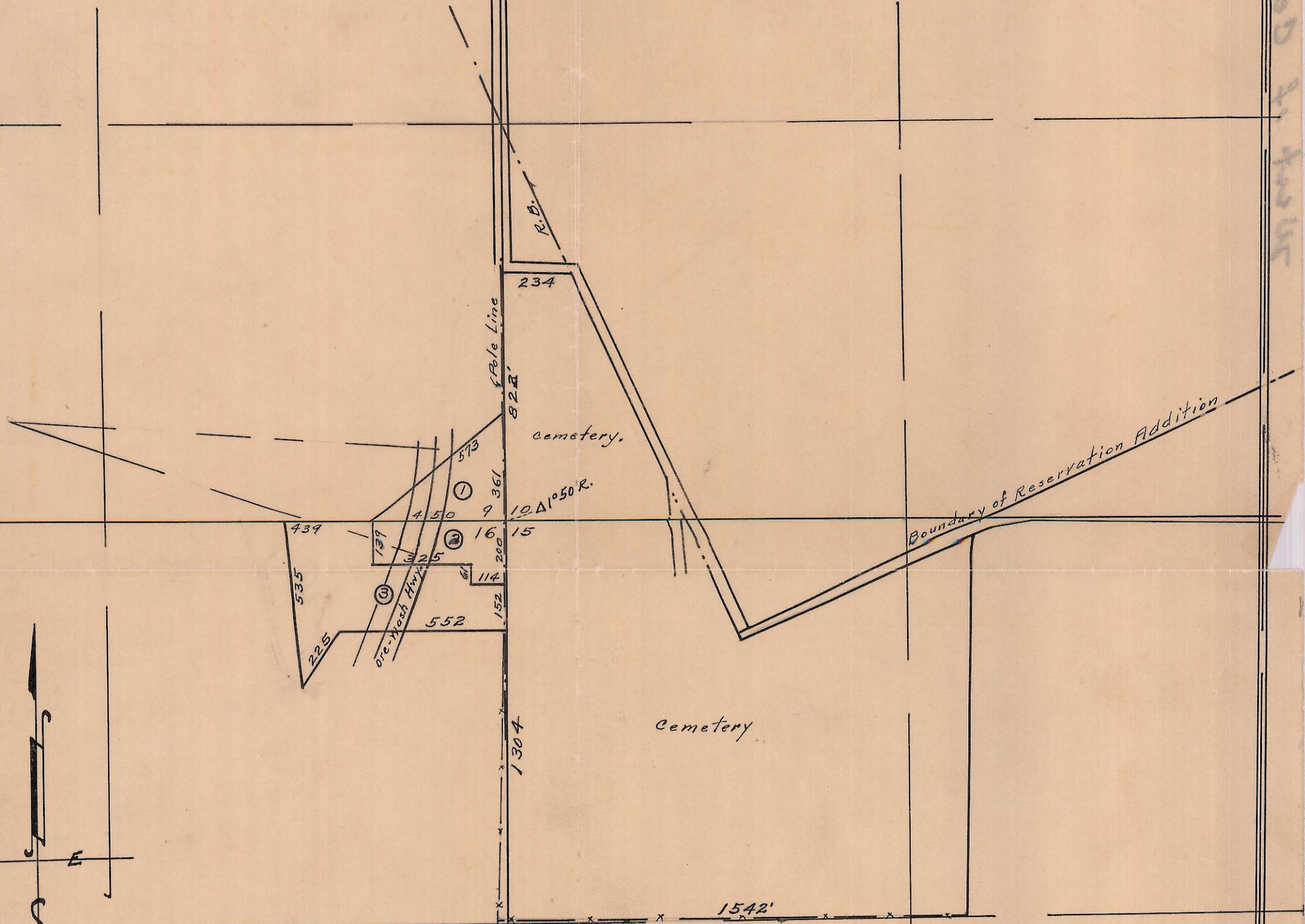
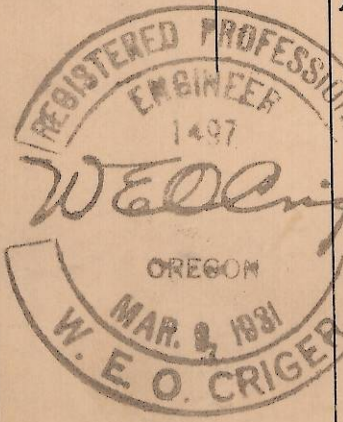


← This line is true from Sec. Corner to Sec. Cor.



Plat Showing
 Descriptive Tracts in Sections
 9 & 16 - T. 2 N., R. 32 E. W. M. and
 being West of and Adjacent to
 the First Addition to Olney's
 Cemetery, Pendleton, Oregon.
 Scale: 1 inch = 400 Ft.
 By W. E. O. Criger, C. E.
 Oct-1947.



(construction Δ only. Not to be used in platting Fence Lines)
 (20 Lt. to S.E. Cor. of Sec. 16 as show on Ground)

This Fence is straight
 and continuous to the
 South W. Line of Sec. 16.
 Then returns to point
 55 Ft. Westerly from
 N.E. Cor. of Sec. 16.

Note: This plat is not made for the purpose
 of establishing corners nor correcting
 corners but simply to indicate the
 position of fence line existing and
 position of corners, either existing
 or, accepted, in case of non-existence.

9 DD
 16 AA

06-150-A

W. E. O. Criger