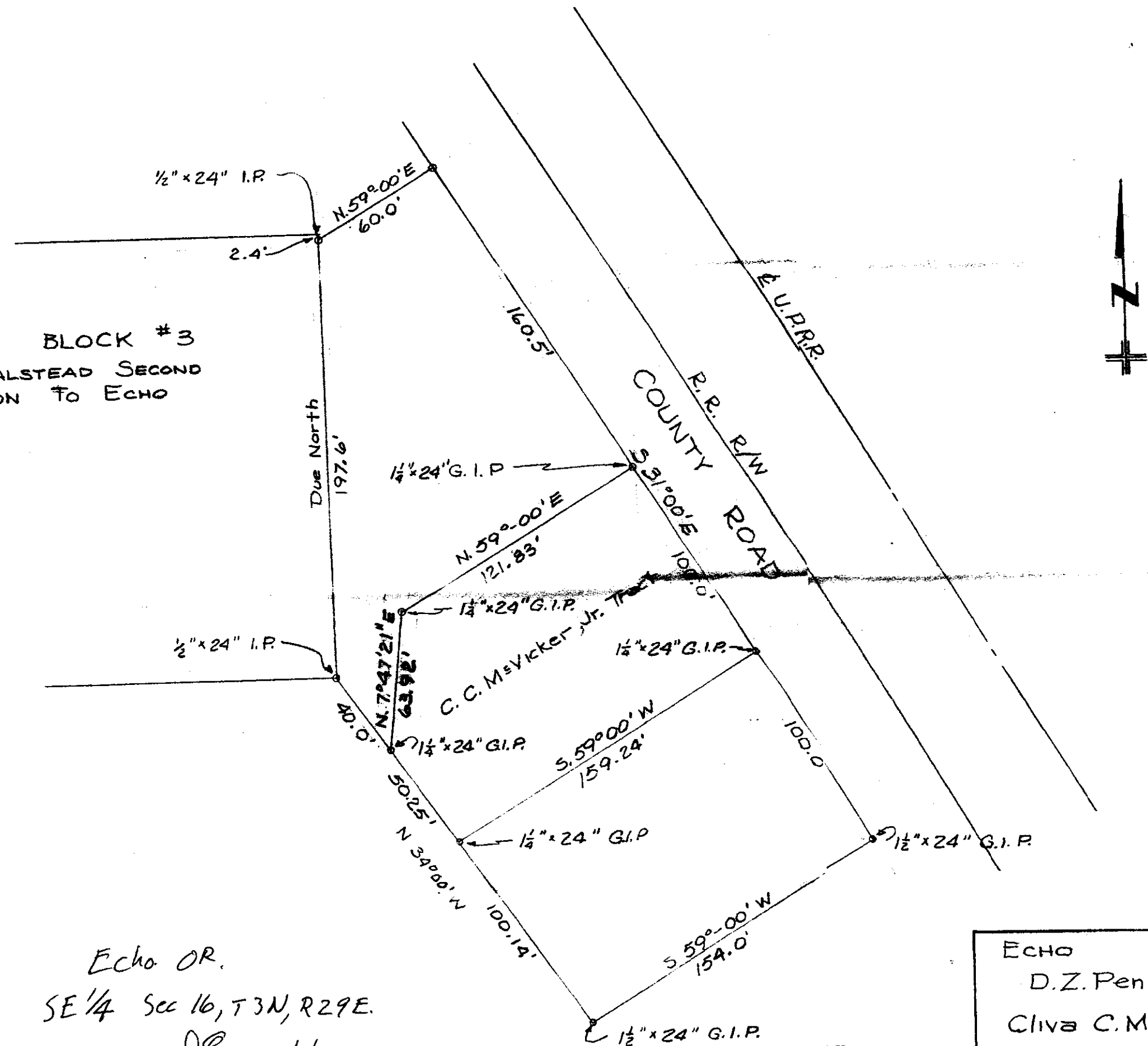


BLOCK #3
HALSTEAD SECOND
ADDITION TO ECHO



Echo OR.
SE 1/4 Sec 16, T3N, R29E.
DE 5/6/02

RECEIVED BY
Umatilla County Surveyor
Date 5-02
Rec'd By KK
No. 02-99-A

ECHO OREGON
D.Z. Penney Tract
Cliva C. McVicker, Jr. Tra
Drawn by C.C.M.V.
18 Jan., 55

original copy 02-99-A