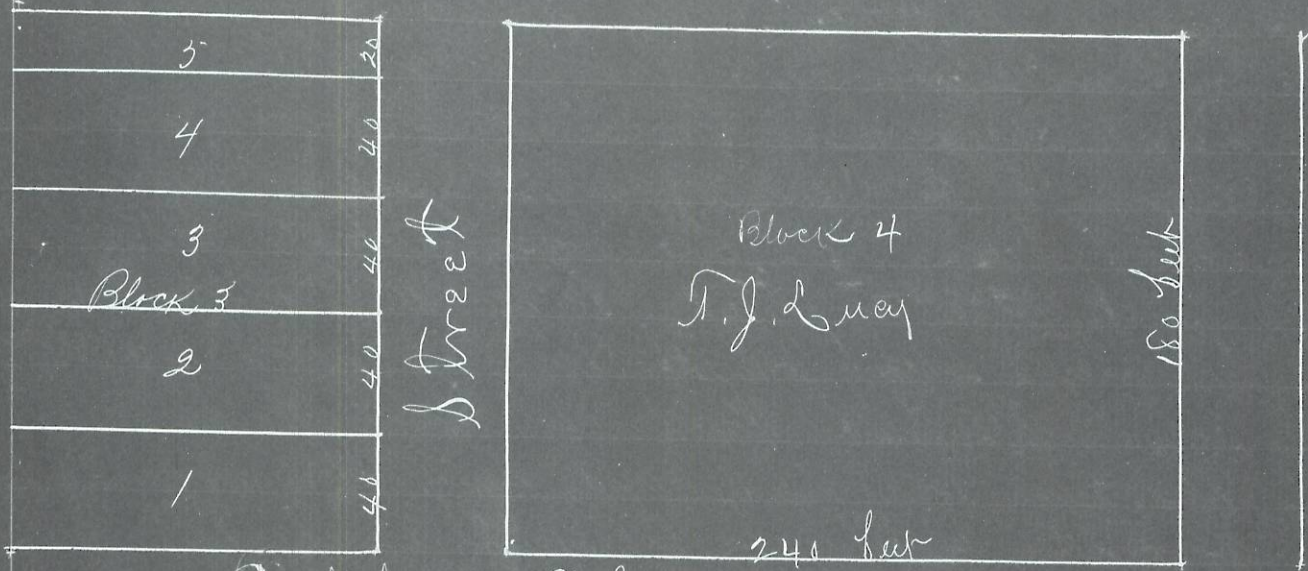
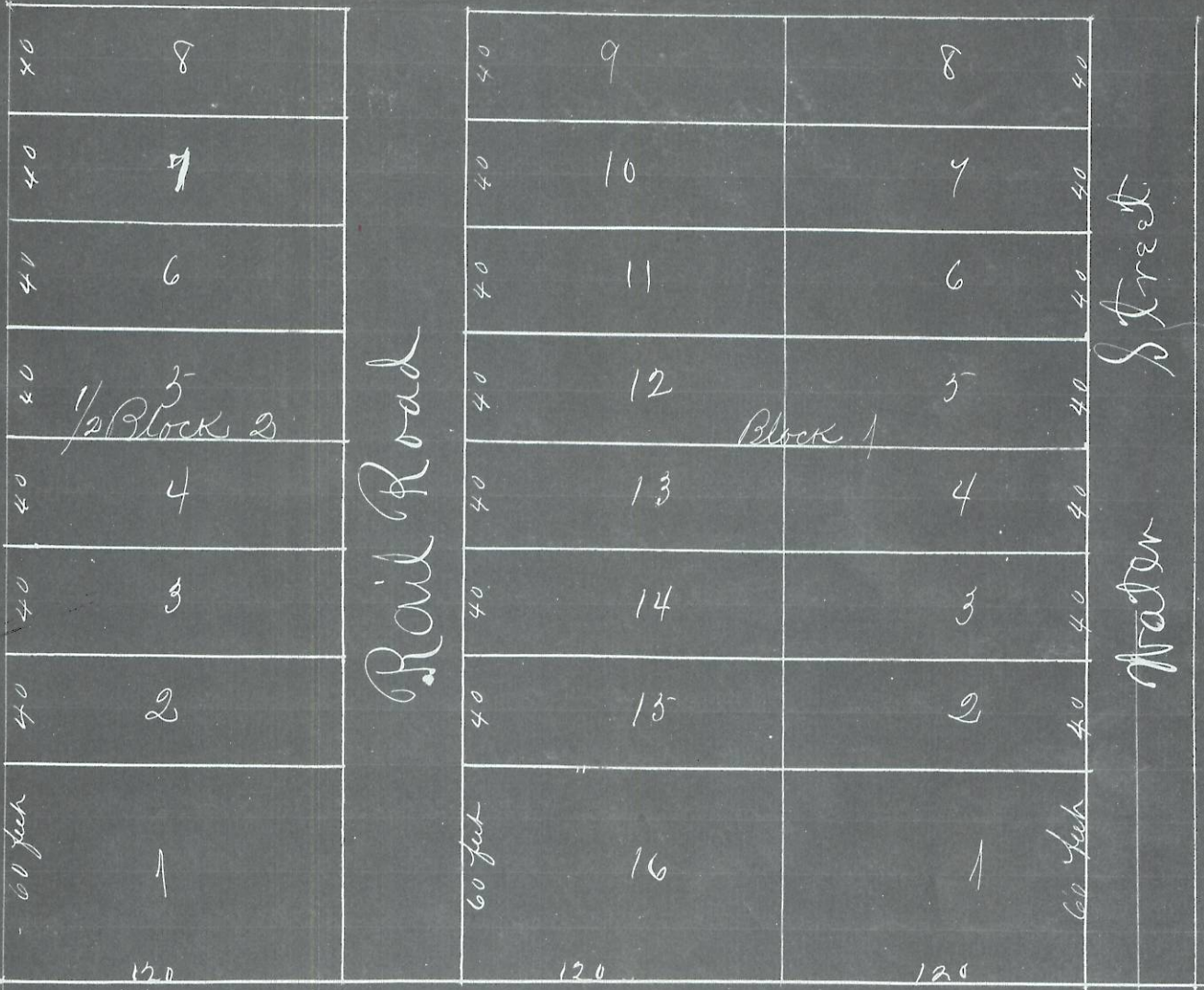


Mays' Addition to Weston



Poplar Street



Mays' Addition Weston is in the NE 2nd Quarter of the NW 2nd Quarter of Section 22 Township Four, North Range Thirty Five East of the Willamette Meridian

Surveyed September 28th, 1875
 T. L. Moorhouse--County Surveyor
 Filed Oct. 5th, 1875 J. H. Sharon Clerk

99-233-A

99-233-A