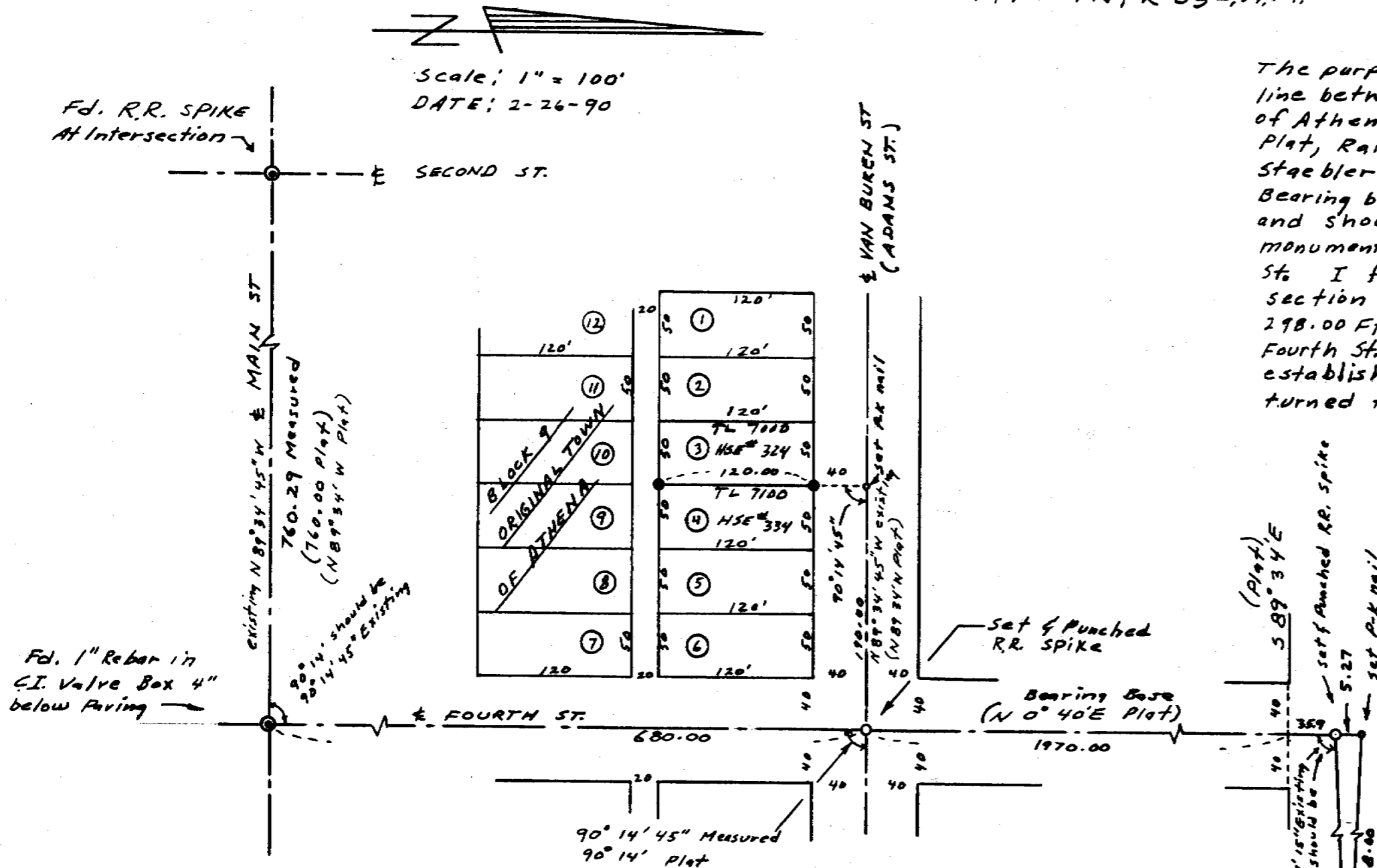


NARRATIVE

The purpose of this survey was to set and mark the lot line between Lots 3 and 4 in Block 9 of the Original Town of Athena, Oregon. Reference used was the Original Town Plat, Railroad Addition Plat, Anderson-Perry Survey # M-82-AX, Staebler Survey # 6-13-A, and Staebler Survey # 87-21-A. Bearing base is Fourth St. being N 0° 40' E figured from and shown on Railroad Addition Plat. I found the existing monuments on Main St. centerline at Second St. and Fourth St. I found the Brass Cap marking the north 1/4 corner of section 19. I measured West from the said 1/4 corner the 298.00 Ft. Platted distance to establish the centerline of Fourth St. at its north end. Fourth St. E to the south is established by the existing 1" pin at Main St. I then turned the angle at Main & Fourth (N.W. quadrant) and found it to be 90° 14' 45" and should be 90° 14' which was platted. I used the existing angle of 90° 14' 45" & the platted distances to Van Buren St. and West on Van Buren to the lot line as shown on this map. I also metered the distance to the north and turned the tying angle to the said 1/4 corner and found it to be 3.68 ft. north of the position as called for in the Railroad Add'n Plat by using the Platted distances from Main St. A One Second theodolite and a H-P 3805 E.D.M. was used for the survey

Donald L. Staebler



LEGEND

- - - - - Set 5/8" x 30" Rebar w/ Red Cap stamped R.L.S. 1333
- - - - - set P-K nail
- ⊙ - - - - set & Punched R.R. Spike
- ⊕ - - - - Found monument as shown
- ⊙ - - - - Found Brass Cap

(N. 1/4 SEC. 19, T4N, R35E.)
 Fd. B.C. For 1/4 sec. corner,
 9" below paving with
 B.C. W.C. to S.E. 39.11 Ft. &
 B.C. W.C. to N.E. 47.58 Ft.

RECEIVED BY
 Umatilla County Surveyor
 Date 3-90
 Rec'd by jt
 No. 90-011-A

REGISTERED PROFESSIONAL LAND SURVEYOR
 DONALD L. STAEBLER
 #1333

FOR: SURVEY OF LOT LINE BETWEEN LOTS 3 & 4 IN BLOCK 9 OF THE ORIGINAL TOWN OF ATHENA, OR. FOR SAFECO INSURANCE CO. Darrel McCrory - Frontier Adjusters P.O. Box 393 Ontario, OR. 97914
 BY: DONALD L. STAEBLER ENGINEER - SURVEYOR 1532 S.W. 41st ST. PENDLETON, OR. 97801 PH. 276-7166

90-11-A