

## PARTITION PLAT 2011-20

IN NW 1/4, SE 1/4, SEC. 12, T 4 N,  
R 28 E, W.M., UMATILLA COUNTY, OREGON  
#LD-4N-931-11

STATE OF OREGON,  
COUNTY OF UMATILLA }  
I certify that this instrument was received and  
recorded

ON August 24, 2011  
at 1:15 o'clock P.m., in the record of  
PLATS of said County:  
YEAR NUMBER Slide  
2011 20

OFFICE OF COUNTY RECORDS

By: ...JEAN HEMPHILL...Records Officer

Fees \$ 65.00 No. 2011-5810870

### APPROVALS:

UMATILLA COUNTY SURVEYOR

APPROVED THIS 8 DAY OF August, 2011.

*David H. Klari*  
UMATILLA COUNTY SURVEYOR

HERMISTON IRRIGATION DISTRICT

APPROVED THIS 4<sup>th</sup> DAY OF August, 2011.

*Jeremy Robu*  
MANAGER

UMATILLA COUNTY PLANNING DEPARTMENT

APPROVED THIS 10<sup>th</sup> DAY OF August, 2011.

*Leif Mathews*  
UMATILLA COUNTY PLANNING DIRECTOR

UMATILLA COUNTY TAX COLLECTOR

TAXES ARE PAID IN FULL

APPROVED THIS 8<sup>th</sup> DAY OF August, 2011.

*Stella Emig* by *Kristen Shanard*  
UMATILLA COUNTY TAX COLLECTOR

### OWNER'S DECLARATION:

WE, THE OWNERS OF THE ABOVE DESCRIBED LAND, HEREBY  
DECLARE THAT WE HAVE CAUSED THIS PLAT TO BE PREPARED.  
WE HEREBY ACKNOWLEDGE THE EASEMENTS AS SHOWN

*Robert D. Luke*  
ROBERT D. LUKE, TRUSTEE OF  
ROBERT D. LUKE & BILLIE KAY LUKE REVOCABLE TRUST

*Billie Kay Luke*  
BILLIE KAY LUKE, TRUSTEE OF  
ROBERT D. LUKE & BILLIE KAY LUKE REVOCABLE TRUST

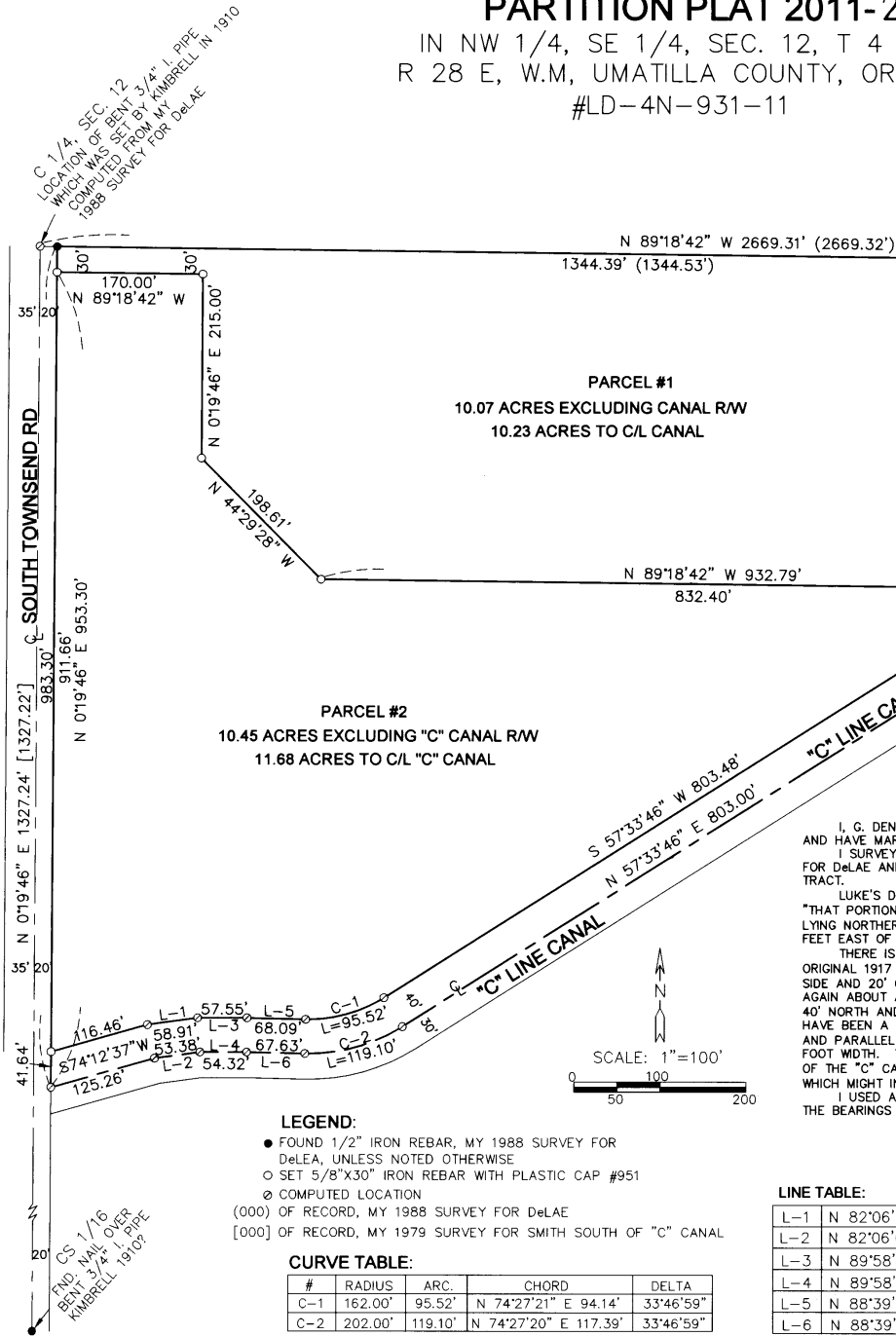
STATE OF OREGON }  
COUNTY OF UMATILLA }

BEFORE ME THIS 3<sup>rd</sup> DAY OF AUGUST, 2011  
APPEARED ROBERT D. LUKE, AND BILLIE KAY LUKE, TRUSTEES OF  
ROBERT D. LUKE & BILLIE KAY LUKE REVOCABLE TRUST AND  
ACKNOWLEDGED THE FOREGOING DEDICATION.

*Debra A. Wainwright*  
NOTARY PUBLIC FOR OREGON  
*Debra A. Wainwright*  
PRINTED NAME

COMMISSION NO. 450905

MY COMMISSION EXPIRES AUGUST 05, 2014



### LEGEND:

- FOUND 1/2" IRON REBAR, MY 1988 SURVEY FOR DeLAE, UNLESS NOTED OTHERWISE
- SET 5/8"x30" IRON REBAR WITH PLASTIC CAP #951
- ⊙ COMPUTED LOCATION
- (000) OF RECORD, MY 1988 SURVEY FOR DeLAE
- [000] OF RECORD, MY 1979 SURVEY FOR SMITH SOUTH OF "C" CANAL

### CURVE TABLE:

#	RADIUS	ARC.	CHORD	DELTA
C-1	162.00'	95.52'	N 74°27'21" E 94.14'	33°46'59"
C-2	202.00'	119.10'	N 74°27'20" E 117.39'	33°46'59"

### LINE TABLE:

L-1	N 82°06'03" E 58.91'
L-2	N 82°06'03" E 53.38'
L-3	N 89°58'33" W 57.55'
L-4	N 89°58'33" W 54.32'
L-5	N 88°39'06" W 68.09'
L-6	N 88°39'06" W 67.63'

REGISTERED  
PROFESSIONAL  
LAND SURVEYOR

*G. Dennis Edwards*

OREGON  
JULY 16, 1971  
G. DENNIS EDWARDS

RENEWS 12/31/2011

THIS IS AN EXACT COPY: *G. Dennis Edwards*  
G. DENNIS EDWARDS

JOB#S1105038  
EDWARDS SURVEYING P.O. BOX 763  
541-567-3336 HERMISTON, OREGON 97838  
DRAWN BY JMC

Jacinta County Surveyor  
Date 9-11  
Rec'd By KH  
No. 11-103-8