

PARTITION PLAT NO. 2007-38 SHEET 1 OF 2

A PARTITION OF PARCEL 3 OF PARTITION PLAT NO. 2006-22.
LOCATED IN THE NE1/4 NW1/4 & NW1/4 NE1/4 OF SECTION 15, T2N., R32E., W.M., CITY OF PENDLETON, UMATILLA COUNTY, OREGON.
OCTOBER, 2007

LEGEND

- - SET 5/8" BY 30" IRON REBAR WITH 1 1/4" RED PLASTIC CAP MARKED "OR PLS 1106, WA PLS 17372", UNLESS OTHERWISE NOTED.
- ⊙ - FOUND 5/8" REBAR WITH A 1 1/4" RED PLASTIC CAP MARKED "OR PLS 1106, WA PLS 17372", PER PARTITION PLAT NO. 2006-22.
- - FOUND 1 1/2" ALUMINUM CAP ON 5/8" REBAR PER PARTITION PLAT NO. 2002-29 OR 1990-06, UNLESS OTHERWISE NOTED.
- (XOX) - RECORD DIMENSION PER PARTITION PLAT NO. 2002-29 OR PARTITION PLAT NO. 1990-06.
- - - - - EXISTING EASEMENT AS NOTED.
- - - - - NEW EASEMENT CREATED ON THIS PLAT, SEE ANNOTATED DETAIL ON SHEET 2.

NOTES:

1. COMMON DIMENSIONS SHOWN ON THIS SURVEY ARE IDENTICAL WITH THOSE OF UMATILLA COUNTY PARTITION PLAT NO. 2006-22.
2. PARTITIONED LANDS ARE SUBJECT TO ANY AND ALL EASEMENTS OF RECORD. THE FOLLOWING EASEMENTS ARE "BLANKET" TYPE EASEMENTS AND ARE NOT SHOWN:
 - RIGHT-OF-WAY EASEMENT GRANTED TO EASTERN OREGON ELECTRIC COOPERATIVE, RECORDED AS INSTRUMENT NO. 1961-260865, AT BOOK 273, PAGE 142, DEED RECORDS OF UMATILLA COUNTY. THIS EASEMENT WAS ASSIGNED TO PACIFIC POWER AND LIGHT CO., RECORDED AS INSTRUMENT NO. 1963-260951, AT BOOK 273, PAGE 158, DEED RECORDS. ("BLANKET" EASEMENT IN SECTION 15).
 - RIGHT-OF-WAY EASEMENT GRANTED TO PACIFIC POWER AND LIGHT COMPANY, RECORDED AS INSTRUMENT NO. 1951-99834 AT BOOK 185, PAGE 257, DEED RECORDS. ("BLANKET EASEMENT" IN PART OF NE1/4 NW1/4 SEC. 15).

RECORDING INFORMATION,
UMATILLA COUNTY OFFICE OF RECORDS:

STATE OF OREGON, COUNTY OF UMATILLA }
I certify that this instrument was received and recorded
ON November 6, 2007
at 9:00 o'clock Am., in the record of
PLATS of said County.
YEAR NUMBER Slide
2007 38

OFFICE OF COUNTY RECORDS

By: ...JEAN HEMPHILL...Records Officer
Fees \$ 50.00 No. 2007-5280135

REGISTERED
PROFESSIONAL
LAND SURVEYOR
William R. Wells
OREGON
JULY 22, 1977
WILLIAM R. WELLS
1106
RENEWS 6/30/08

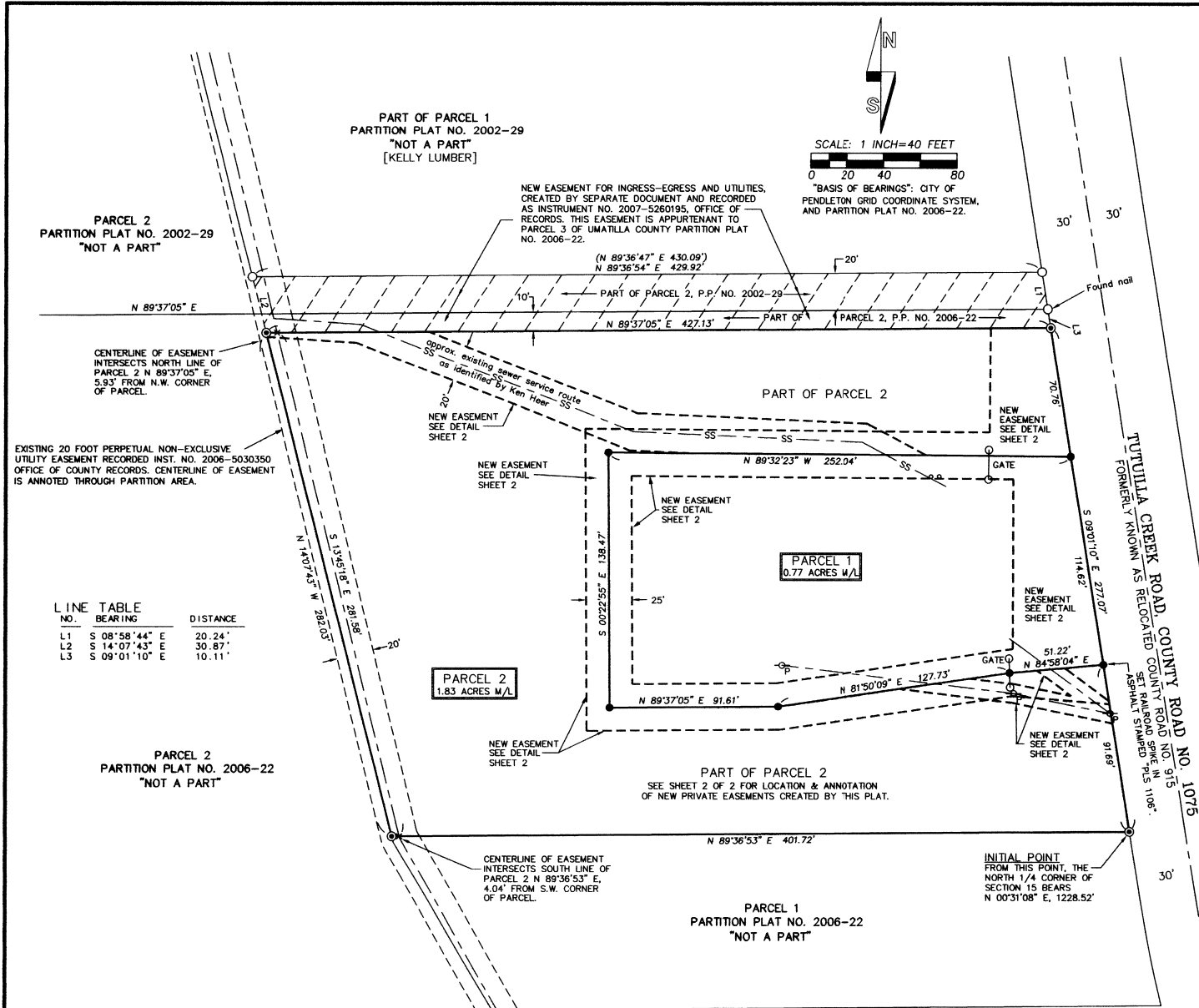
WILLIAM R. WELLS, PLS
2602 N.E. RIVERSIDE PLACE
P.O. BOX 1696
PENDLETON, OR 97801
PHONE: (541) 276-6362

PROJECT: ✓HEERPP07
PARTITION PLAT FOR:
HEER
LOCATED IN THE NE1/4 NW1/4 AND THE NW1/4 NE1/4 SECTION OF 15, TOWNSHIP 2 NORTH, RANGE 32 EAST, W.M., CITY OF PENDLETON, UMATILLA COUNTY, OREGON.

DATE: 07/07 DR. BY: DMT
CK. BY: WRW NO: 07-1138

I CERTIFY THIS IS AN EXACT COPY OF
PARTITION PLAT NO. 2007-38

William R. Wells
WILLIAM R. WELLS, PLS



OWNER'S DECLARATION & EASEMENT DESIGNATION

KENNETH A. HEER AND BEATTA L. HEER, TRUSTEES OF THE KENNETH A. HEER TRUST, EXECUTED THE 18TH DAY OF JULY, 1994, AND BEATTA L. HEER AND KENNETH A. HEER, TRUSTEES OF THE BEATTA L. HEER TRUST, EXECUTED THE 18TH DAY OF JULY, 1994, OWNERS, DO HEREBY ACKNOWLEDGE THAT WE HAVE CAUSED THIS PARTITION PLAT TO BE PREPARED IN ACCORDANCE WITH ORS CHAPTER 92, AS REVISED, AND THE CITY OF PENDLETON AND UMATILLA COUNTY DEVELOPMENT ORDINANCES.

WE HEREBY DESIGNATE THE NEW PRIVATE UTILITY AND INGRESS-EGRESS EASEMENTS AS SHOWN ON THIS PLAT, FOR THE PURPOSES INDICATED.

Kenneth A. Heer *Beatta L. Heer*
KENNETH A. HEER, TRUSTEE BEATTA L. HEER, TRUSTEE

AS TRUSTEES OF THE KENNETH A. HEER TRUST, EXECUTED THE 18TH DAY OF JULY, 1994 AND AS TRUSTEES OF THE BEATTA L. HEER TRUST, EXECUTED THE 18TH DAY OF JULY 1994.

STATE OF OREGON
COUNTY OF UMATILLA

THIS INSTRUMENT WAS ACKNOWLEDGED BEFORE ME ON

THIS 31 DAY OF October, 2007.

BY KENNETH A. HEER AND BEATTA L. HEER

Dawn M. Lubbs
NOTARY PUBLIC FOR THE STATE OF OREGON

MY COMMISSION EXPIRES: 10-14-2008

COMMISSION NUMBER: 385199

SURVEYORS CERTIFICATE & NARRATIVE

I CERTIFY THAT I HAVE SHOWN AND MONUMENTED PARCELS 1 AND 2 OF THIS PARTITION PLAT IN ACCORDANCE WITH ORS CHAPTER 92, AS REVISED, AND THE CITY OF PENDLETON AND UMATILLA COUNTY ORDINANCES.

THIS SURVEY WAS MADE BY A 2 PERSON CREW USING TRIMBLE 5700 GEODETIC G.P.S. RECEIVERS OPERATED IN REAL TIME KINEMATIC MODE. MONUMENTS WERE ESTABLISHED BY G.P.S. REAL TIME KINEMATIC METHODS AND VERIFIED BY SEPARATE OBSERVATIONS.

REAL PROPERTY DESCRIPTION:

A tract of land located in the Northeast Quarter of the Northwest Quarter and the Northwest Quarter of the Northeast Quarter of Section 15, Township 2 North, Range 32 East, W.M., Umatilla County, described as follows:

Parcel 3 of Umatilla County Partition Plat 2006-22, recorded as Instrument No. 2006-5060433, Record of Plats, Umatilla County, Oregon.

Will R. Wells
WILLIAM R. WELLS, PLS

REGISTERED PROFESSIONAL LAND SURVEYOR
OREGON
JULY 22, 1977
WILLIAM R. WELLS
1106
RENEWS 6/30/08

LEGEND

- - SET 5/8" BY 30" IRON REBAR WITH 1 1/4" RED PLASTIC CAP MARKED "OR PLS 1106, WA PLS 17372".
- ⊙ - FOUND 5/8" REBAR WITH 1 1/4" RED PLASTIC CAP PER PARTITION PLAT NO. 2006-22.
- X - CALCULATED POINT ONLY, NOT SET OR FOUND.

PARTITION PLAT NO. 2007-38 SHEET 2 OF 2

A PARTITION OF PARCEL 3 OF PARTITION PLAT NO. 2006-22.

LOCATED IN THE NE1/4 NW1/4 & NW1/4 NE1/4 OF SECTION 15, T2N., R32E., W.M., CITY OF PENDLETON, UMATILLA COUNTY, OREGON OCTOBER, 2007

APPROVALS

EXAMINED AND APPROVED THIS _____ DAY OF _____, 2007.
LAND DIVISION NO. _____
PENDLETON CITY PLANNER _____
EXAMINED AND APPROVED THIS 02 DAY OF November, 2007.
CITY OF PENDLETON SURVEYOR _____
EXAMINED AND APPROVED THIS 6 DAY OF November, 2007.
Dawn M. Lubbs
UMATILLA COUNTY SURVEYOR
TAXES ARE PAID IN FULL THIS: 5th DAY OF November, 2007.
Bethanne Smith for Dawn McCle
UMATILLA COUNTY TAX COLLECTOR *County*

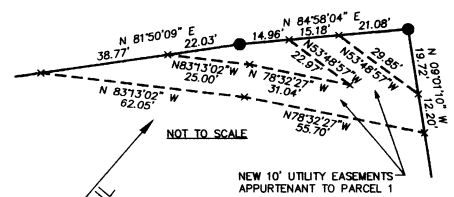
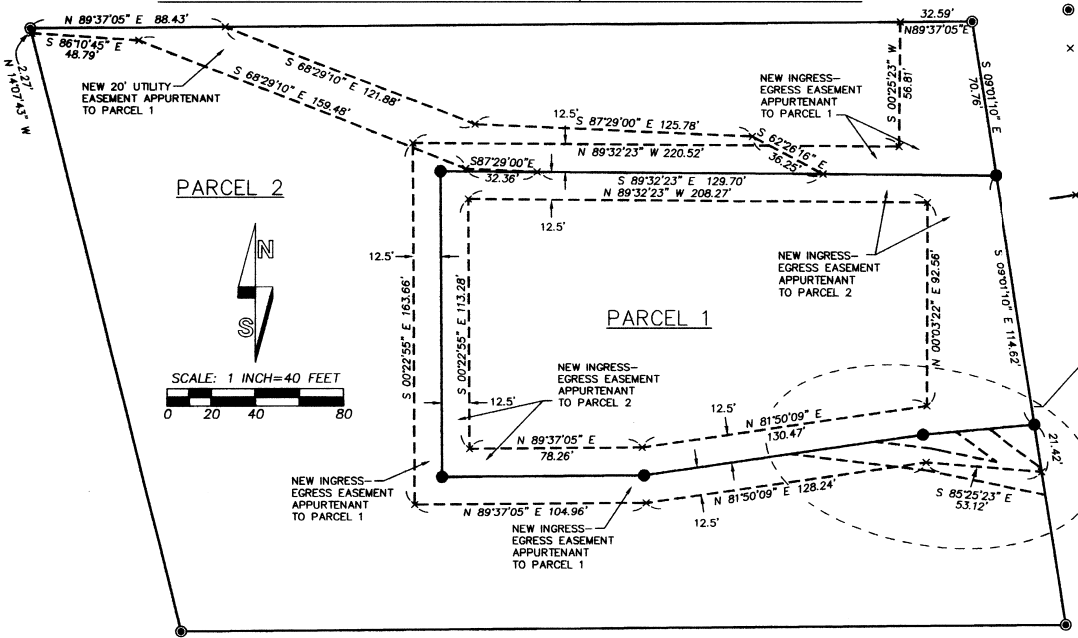
RECORDING INFORMATION, UMATILLA COUNTY OFFICE OF RECORDS:

STATE OF OREGON, COUNTY OF UMATILLA }
I certify that this instrument was received and recorded
ON November 6, 2007
at 9:00 o'clock Am., in the record of PLATS of said County.
YEAR NUMBER Slide
2007 38

OFFICE OF COUNTY RECORDS

By: Jean HEMPHILL, Records Officer
Fees \$ 50.00 No. 2007-5280135

LOCATION DETAIL FOR NEW PRIVATE INGRESS-EGRESS AND UTILITY EASEMENTS APPURTENANT TO PARCELS 1 AND 2, CREATED BY THIS PLAT.



I CERTIFY THIS IS AN EXACT COPY OF PARTITION PLAT NO. 2007-38
Will R. Wells
WILLIAM R. WELLS, PLS

WILLIAM R. WELLS, PLS
2602 N.E. RIVERSIDE PLACE
P.O. BOX 1696
PENDLETON, OR 97801
PHONE: (541) 276-6362

PROJECT: HEER
PARTITION PLAT FOR:
HEER
LOCATED IN THE NE1/4 NW1/4 AND THE NW1/4 NE1/4 SECTION 15, TOWNSHIP 2 NORTH, RANGE 32 EAST, W.M., CITY OF PENDLETON, UMATILLA COUNTY, OREGON.

DATE: 07/07 DR. BY: DMT
CK. BY: WRW NO. 07-1138

RECEIVED BY: _____