

2006-10

# PARTITION PLAT 2006-10

OF PARCEL 2 PARTITION PLAT 2005-17  
IN SE 1/4, SEC. 36, T 5 N, R 28 E,  
W.M., UMATILLA COUNTY, OREGON  
#LD-5N-702-06

### SURVEYOR'S CERTIFICATE & NARRATIVE:

I, G. DENNIS EDWARDS AM A REGISTERED SURVEYOR OF THE STATE OF OREGON, AND HAVE MARKED WITH LEGAL MONUMENTS THE LAND SHOWN ON THIS PLAT.  
I SURVEYED THIS TRACT IN PARTITION PLAT 2005-17 AND THE BEARINGS AND THIS SURVEY ARE BASED ON SAID PARTITION PLAT.  
DESCRIPTION: PARCEL 2 OF PARTITION PLAT 2005-17 IN THE SOUTHEAST QUARTER OF SECTION 36, TOWNSHIP 5 NORTH, RANGE 28 EAST, WILLAMETTE MERIDIAN, UMATILLA COUNTY, OREGON.

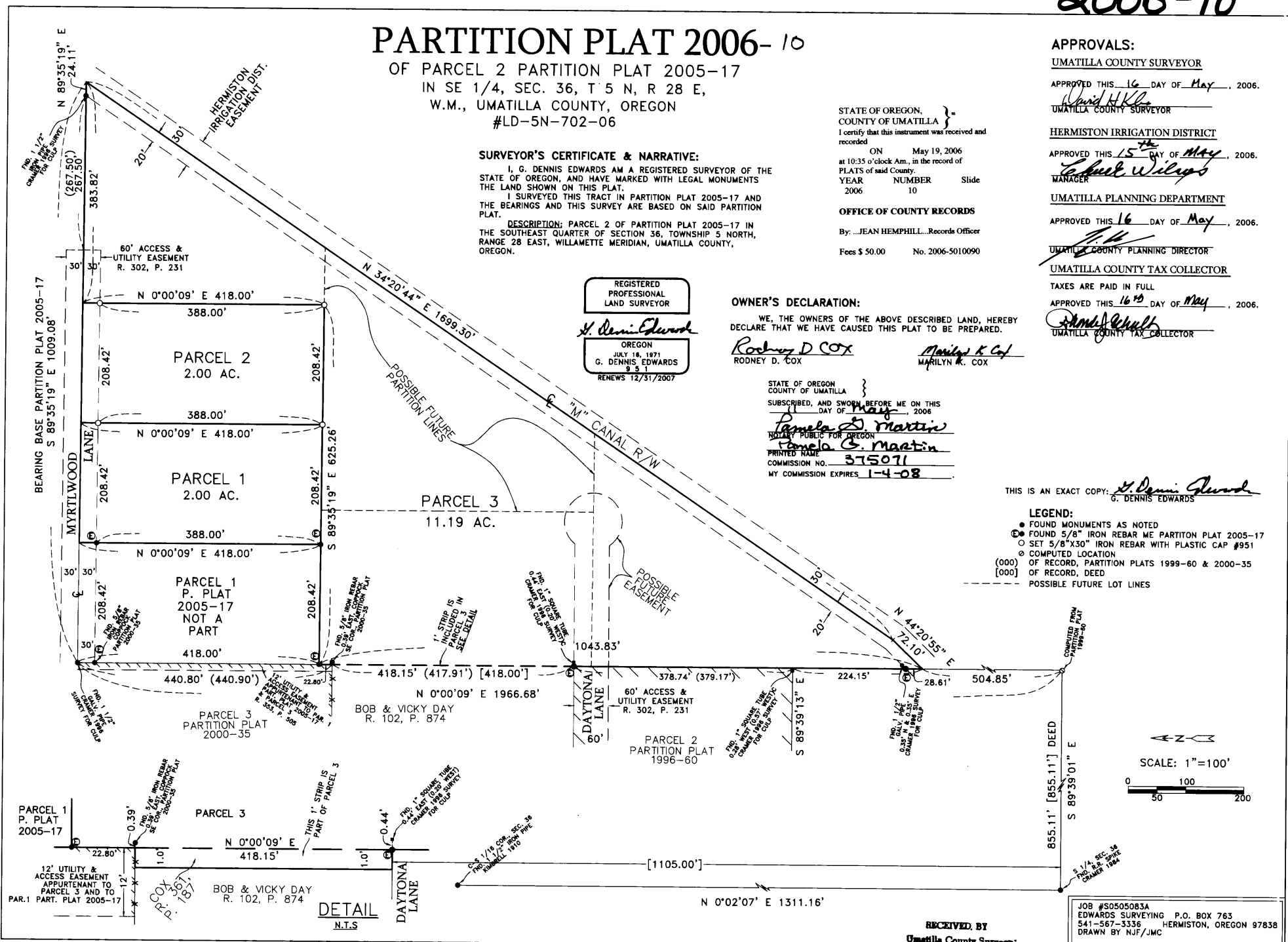
REGISTERED PROFESSIONAL LAND SURVEYOR  
*G. Dennis Edwards*  
OREGON  
JULY 18, 1971  
G. DENNIS EDWARDS  
RENEWS 12/31/2007

### OWNER'S DECLARATION:

WE, THE OWNERS OF THE ABOVE DESCRIBED LAND, HEREBY DECLARE THAT WE HAVE CAUSED THIS PLAT TO BE PREPARED.  
*Robyn D Cox*      *Marilyn K Cox*  
ROBYN D. COX      MARILYN K. COX

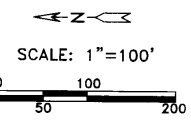
STATE OF OREGON }  
COUNTY OF UMATILLA }  
SUBSCRIBED, AND SWORN BEFORE ME ON THIS \_\_\_\_\_ DAY OF May, 2006  
*Pamela S Martin*  
NOTARY PUBLIC FOR OREGON  
*Pamela S Martin*  
PRINTED NAME: Pamela S Martin  
COMMISSION NO. 375071  
MY COMMISSION EXPIRES 1-4-08

APPROVALS:  
UMATILLA COUNTY SURVEYOR  
APPROVED THIS 16 DAY OF May, 2006.  
*David H Kline*  
UMATILLA COUNTY SURVEYOR  
HERMISTON IRRIGATION DISTRICT  
APPROVED THIS 15<sup>th</sup> DAY OF May, 2006.  
*Michael Wilgus*  
MANAGER  
UMATILLA PLANNING DEPARTMENT  
APPROVED THIS 16 DAY OF May, 2006.  
*[Signature]*  
UMATILLA COUNTY PLANNING DIRECTOR  
UMATILLA COUNTY TAX COLLECTOR  
TAXES ARE PAID IN FULL  
APPROVED THIS 16<sup>th</sup> DAY OF May, 2006.  
*David Schultz*  
UMATILLA COUNTY TAX COLLECTOR



THIS IS AN EXACT COPY: *G. Dennis Edwards*  
G. DENNIS EDWARDS

- LEGEND:
- FOUND MONUMENTS AS NOTED
  - FOUND 5/8" IRON REBAR ME PARTITION PLAT 2005-17
  - SET 5/8"x30" IRON REBAR WITH PLASTIC CAP #951
  - COMPUTED LOCATION OF RECORD, PARTITION PLATS 1999-60 & 2000-35
  - [000] OF RECORD, DEED
  - POSSIBLE FUTURE LOT LINES



RECEIVED BY  
Umatilla County Surveyor  
Date 5-06  
Rec'd By [Signature]  
No. 06-323-B

JOB #S0505083A  
EDWARDS SURVEYING P.O. BOX 763  
541-567-3336      HERMISTON, OREGON 97858  
DRAWN BY NJF/JMC