

PARTITION PLAT FOR LARRY DAVIS

PARTITION PLAT NO. 1998-45

A PARTITION OF PARCEL 3 OF
UMATILLA COUNTY PARTITION PLAT NO. 1996-23.
LOCATED IN THE NORTHWEST QUARTER OF SECTION 6, TOWNSHIP 4 NORTH,
RANGE 24 EAST, T1M, UMATILLA COUNTY, OREGON.
JULY, 1998

N.M. Cor. Sec. 6
Fd. 2 1/2" brass cap
monument per S.N.
5-156 and 95-54-B.

OWNER'S DECLARATION

WE, JOHN M. AND JANET M. FREEMAN, CONTRACT HOLDERS, AND LARRY D. DAVIS, CONTRACT PURCHASER, DO HEREBY ACKNOWLEDGE THAT THIS PARTITION PLAT WAS PREPARED WITH OUR KNOWLEDGE AND CONSENT AND THIS LAND PARTITIONED IN ACCORDANCE WITH ORS CHAPTER 92, AS REVISED, AND THE UMATILLA COUNTY DEVELOPMENT ORDINANCE.

Larry D. Davis
LARRY DAVIS, CONTRACT PURCHASER

SUBSCRIBED AND SHOWN BEFORE ME ON THIS
28th DAY OF Sept. 1998.

Carole M. Walker
NOTARY PUBLIC FOR THE STATE OF OREGON

MY COMMISSION EXPIRES Mar. 29, 2002.



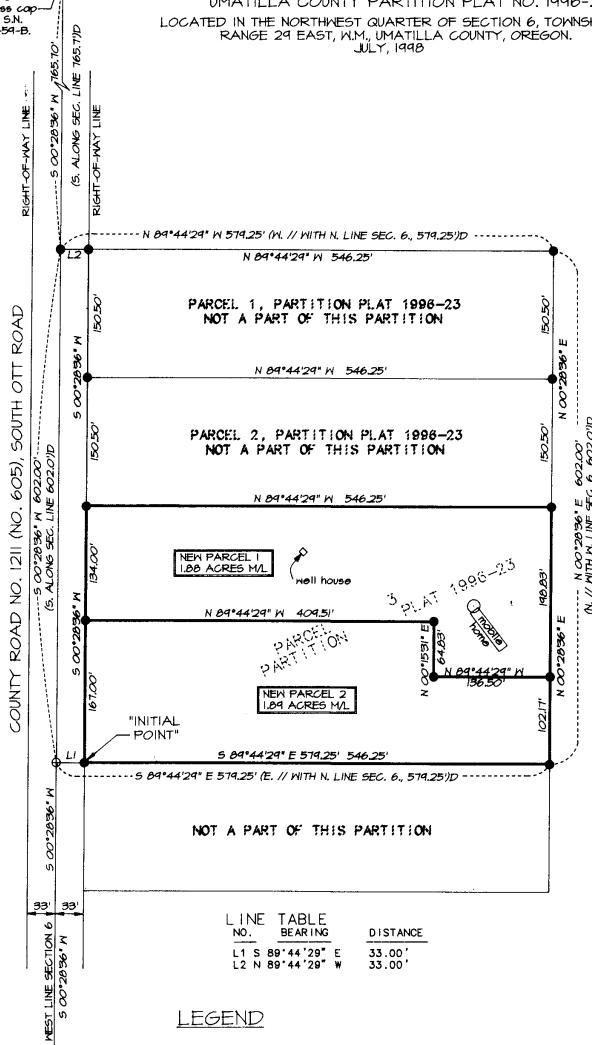
John M. Freeman
JOHN M. FREEMAN, CONTRACT HOLDER

Janet M. Freeman
JANET M. FREEMAN, CONTRACT HOLDER

SUBSCRIBED AND SHOWN BEFORE ME ON THIS
30 DAY OF October 1998.

Duck B. Morera
NOTARY PUBLIC FOR THE STATE OF IDAHO

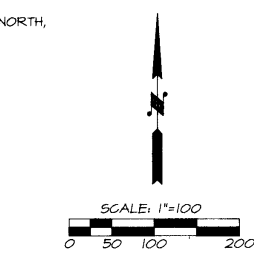
MY COMMISSION EXPIRES 7/1/2003



NO.	BEARING	DISTANCE
L1	S 89°44'29" E	33.00'
L2	N 89°44'29" W	33.00'

LEGEND

- - FOUND 5/8" IRON PIN WITH 1 1/2" YELLOW PLASTIC CAP MARKED "OR PLS 1639" FROM UMATILLA COUNTY PARTITION PLAT NO. 1996-23.
- - FOUND MONUMENT AS NOTED.
- ⊕ - CALCULATED POINT ONLY, NOT SET OR FOUND.
- S.N. - INDICATES RECORDED SURVEY NUMBER.
- (XOX) - RECORD DIMENSION, RECORD INDICATED.
- (XOX)D - RECORD DIMENSION FROM DEED.
- L1 - LINE TOO SHORT TO ANNOTATE, SEE LINE TABLE.



⊕ BASIS OF BEARINGS: PARTITION PLAT NO. 1996-23.
NOTE: DIMENSIONS SHOWN ON THIS PLAT ARE IDENTICAL TO THOSE OF RECORD SHOWN ON PARTITION PLAT NO. 1996-23.
SEE PARTITION PLAT NO. 1996-23 FOR SURVEY CONTROL DATA.

SURVEYOR'S CERTIFICATE AND NARRATIVE

I HEREBY CERTIFY THAT I HAVE CORRECTLY SHOWN PARCELS 1 AND 2 OF THIS PARTITION PLAT IN ACCORDANCE WITH ORS CHAPTER 92, AS REVISED, AND THE UMATILLA COUNTY DEVELOPMENT ORDINANCE.

THE BOUNDARIES OF PARCELS 1 AND 2 ARE MONUMENTED AS SHOWN. THIS SURVEY WAS MADE AT THE REQUEST OF LARRY DAVIS. THE REQUIRED BOUNDARY MONUMENTS FOR THIS NEW PARTITION WERE PLACED AS REPORTED ON PARTITION PLAT NO. 1996-23 AND ARE EXISTING.

SEE PARTITION PLAT NO. 1996-23 FOR SURVEY CONTROL DATA.

THE SURVEY WAS MADE WITH A 2 PERSON GREM USING A SOKKIA SET 4-B FIVE SECOND TOTAL STATION. MEASUREMENTS WERE MADE BY A COMBINATION OF RADIAL TIES AND CLOSED TRAVERSES. MONUMENTS WERE ESTABLISHED BY RADIAL METHODS AND VERIFIED BY SEPARATE OBSERVATIONS.

REAL PROPERTY DESCRIPTION OF PARTITIONED LANDS:

PARCEL 3 OF UMATILLA COUNTY PARTITION PLAT NO. 1996-23, LOCATED IN THE NORTHWEST QUARTER OF SECTION 6, TOWNSHIP 4 NORTH, RANGE 24 EAST, T1M, UMATILLA COUNTY, OREGON.

William R. Wells
REGISTERED PROFESSIONAL LAND SURVEYOR
WILLIAM R. WELLS, PLS

William R. Wells
OREGON
JULY 22, 1977
WILLIAM R. WELLS
1106
RENEWS 6/30/00

I CERTIFY THAT THIS IS AN EXACT COPY OF PARTITION PLAT NO. 1998-45

William R. Wells
WILLIAM R. WELLS, PLS

APPROVALS

EXAMINED AND APPROVED THIS
24 DAY OF November 1998

LAND PARTITION APPROVAL NO.
LS 48 (72 97)

David H. Hinkle
UMATILLA COUNTY PLANNING DIRECTOR
EXAMINED AND APPROVED THIS

12 DAY OF November 1998

David H. Hinkle
UMATILLA COUNTY SURVEYOR
EXAMINED AND APPROVED THIS

9th DAY OF November 1998

David H. Hinkle
HERMISTON IRRIGATION DISTRICT
TAXES ARE CURRENT, THIS

12th DAY OF November 1998

Shirley Schull
COUNTY TAX COLLECTOR
RECORDING INFORMATION
UMATILLA COUNTY CLERK.

STATE OF OREGON,
COUNTY OF UMATILLA }
I certify that this instrument was received and recorded

ON November 27, 1998
at 8:45 o'clock Am., in the record of
PLATS of said County.
YEAR NUMBER Slide
1998 45

OFFICE OF COUNTY RECORDS

By: GEORGIA MCNAUGHT Records Officer
Fees \$ 25.00 No. 1998-3410004

WILLIAM R. WELLS, PLS
357 N.E. HWY. 11
P.O. BOX 1696
PENDLETON, OR 97801
PHONE: (541) 276-6362

DATE: 5/21/98 DR. BY: DMT
CK. BY: WRW NO: 46-367

PROJECT:
PARTITION PLAT FOR:
LARRY DAVIS
2210 NORTH OTT ROAD
HERMISTON, OR 97838

LOCATED IN THE NW 1/4, SECTION 6,
T4N, R24E, T1M, UMATILLA COUNTY
OREGON.