

Plat of Road No 429.

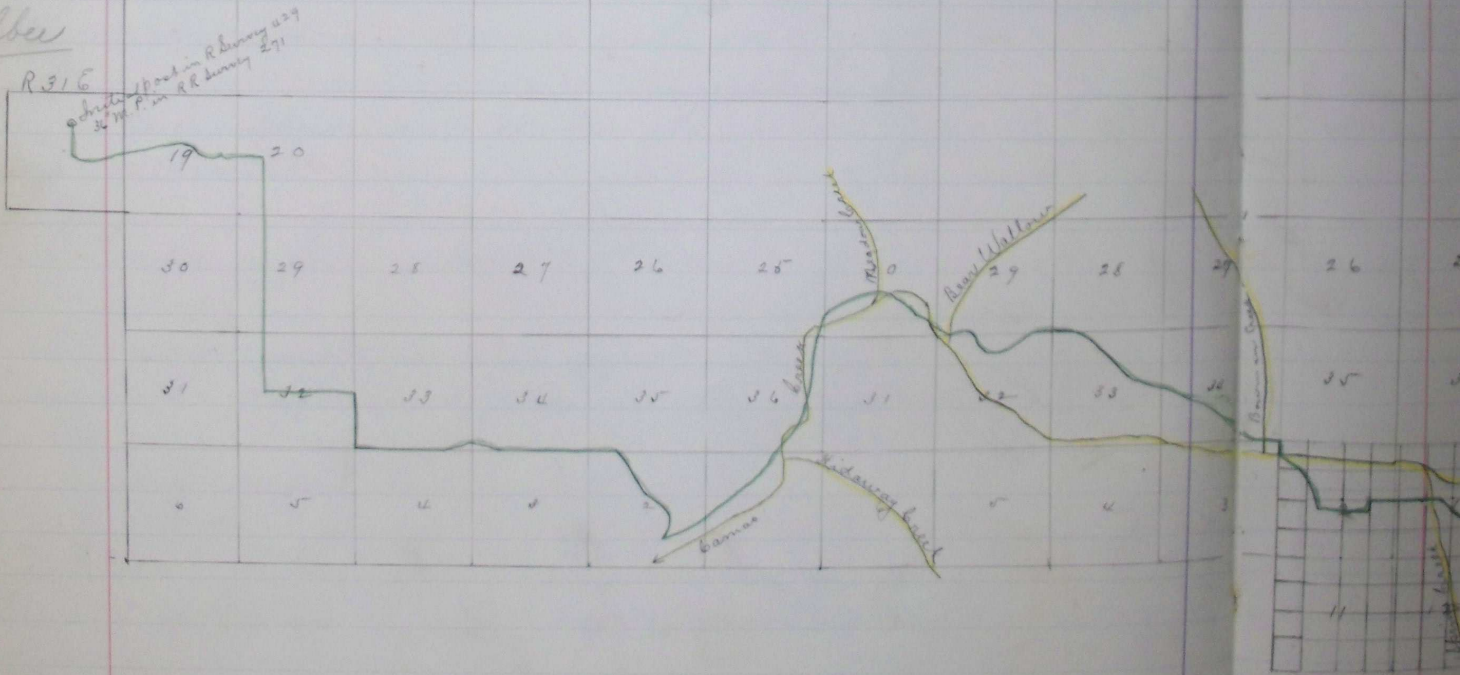
I hereby certify the following is a True Plat of Road Survey No. 429, for Umatilla County Oregon.

Jno L Arnold, Surveyor

Top & SR 32 E 1/2 W 1/2

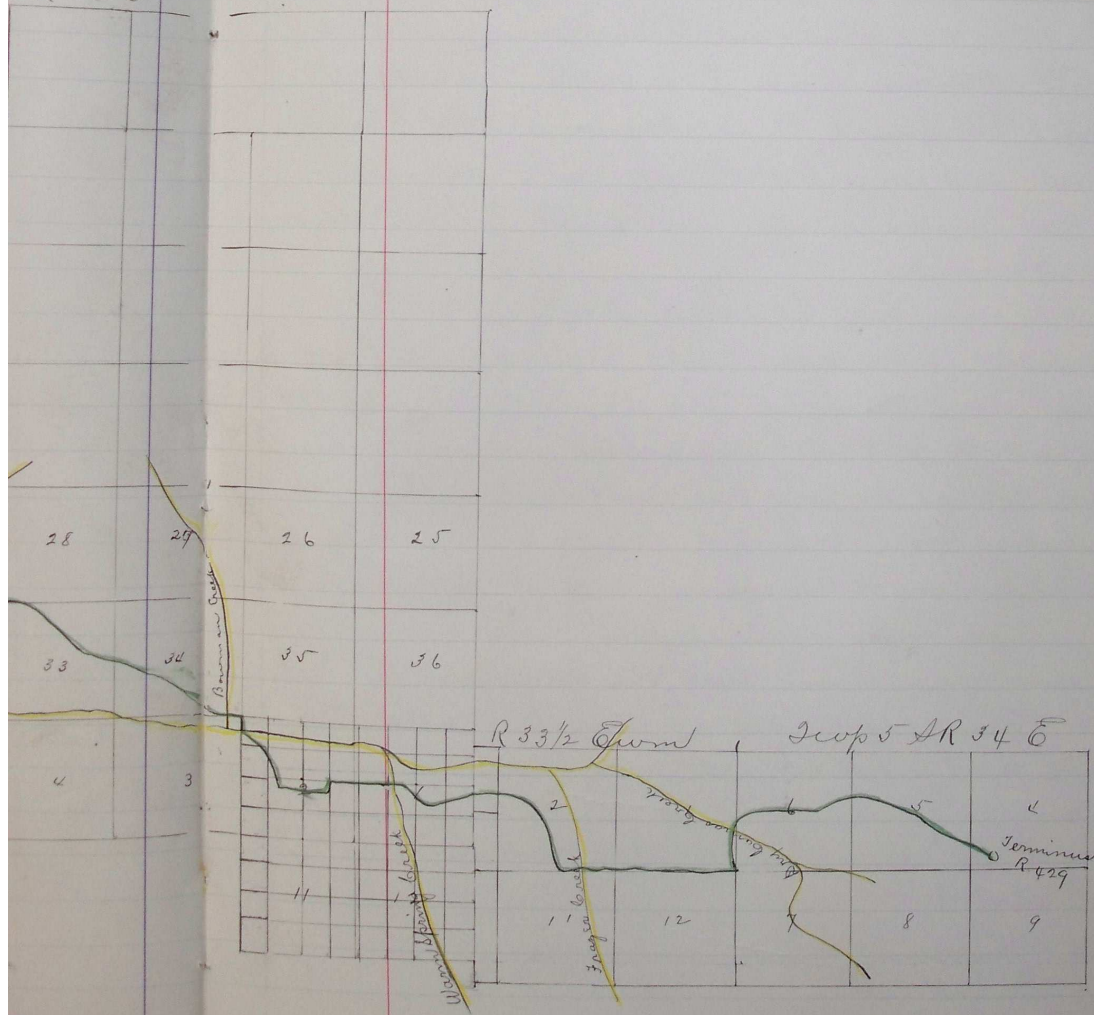
Top & SR 33 E

Alber



Plat
unty
ayor.

AR 33 E



Filed Aug 1st 1893. }
 W.M. Pierce Clerk } 539