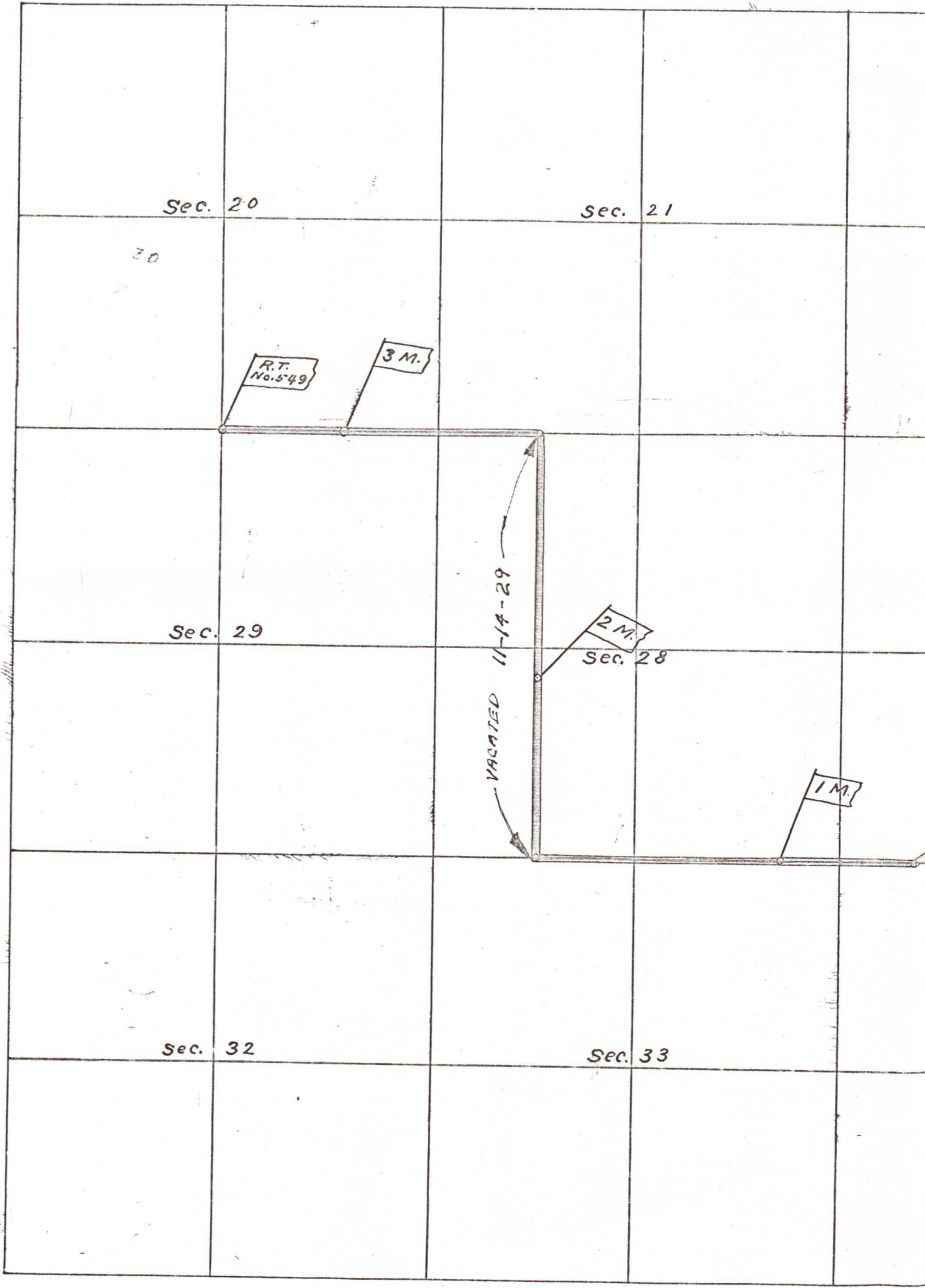


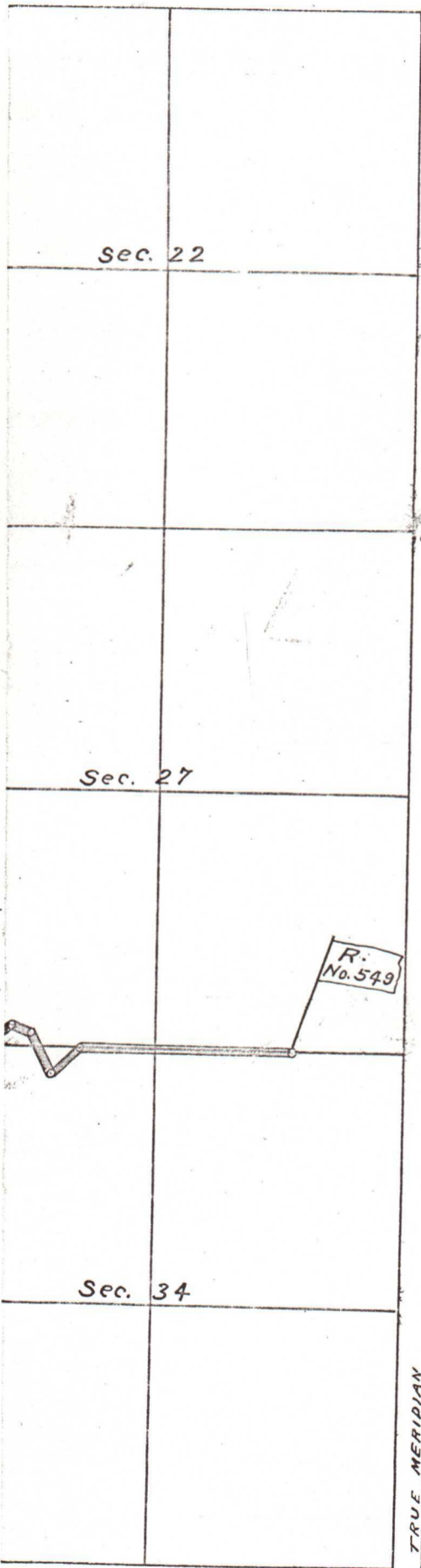
42/9
249

Plat of Road No. 549
In Township 1 North Range



549

32 East W.M.



I hereby certify that
the foregoing is a correct
plat of Road No. 549
as surveyed by me
June 9th 1903
Geary Kimbell
Deputy Co. Surveyor

TRUE MERIDIAN
VAR. 21° 30'

Scale 25 Chs. = 1 In.