

161

Field notes of Survey

Change in Road

At the 1/4 Sec cor of the South line of Sec 17. Tp 1 N. R. 32 E. I took an observation on the sun to establish the meridian.

Standard Time 1.0'clock

Local " 12^h 58^m "

Declination of Sun 9° 44' 32" South

Refraction 0' 1" 20"

Latitude 45° 33' North

Altitude 34°

Variation of Needle 21° 30' E

From thence north through Sec 17. Tp 1 N Range 32. E. W. M.

Course	L.	R.	Dist.	Total Dist	Remarks.
North			2640		
S 89° 35' E		90° 25'	1114	3754	Set stake and aug. L
	18° 40'				To line of old Road and end of Survey.

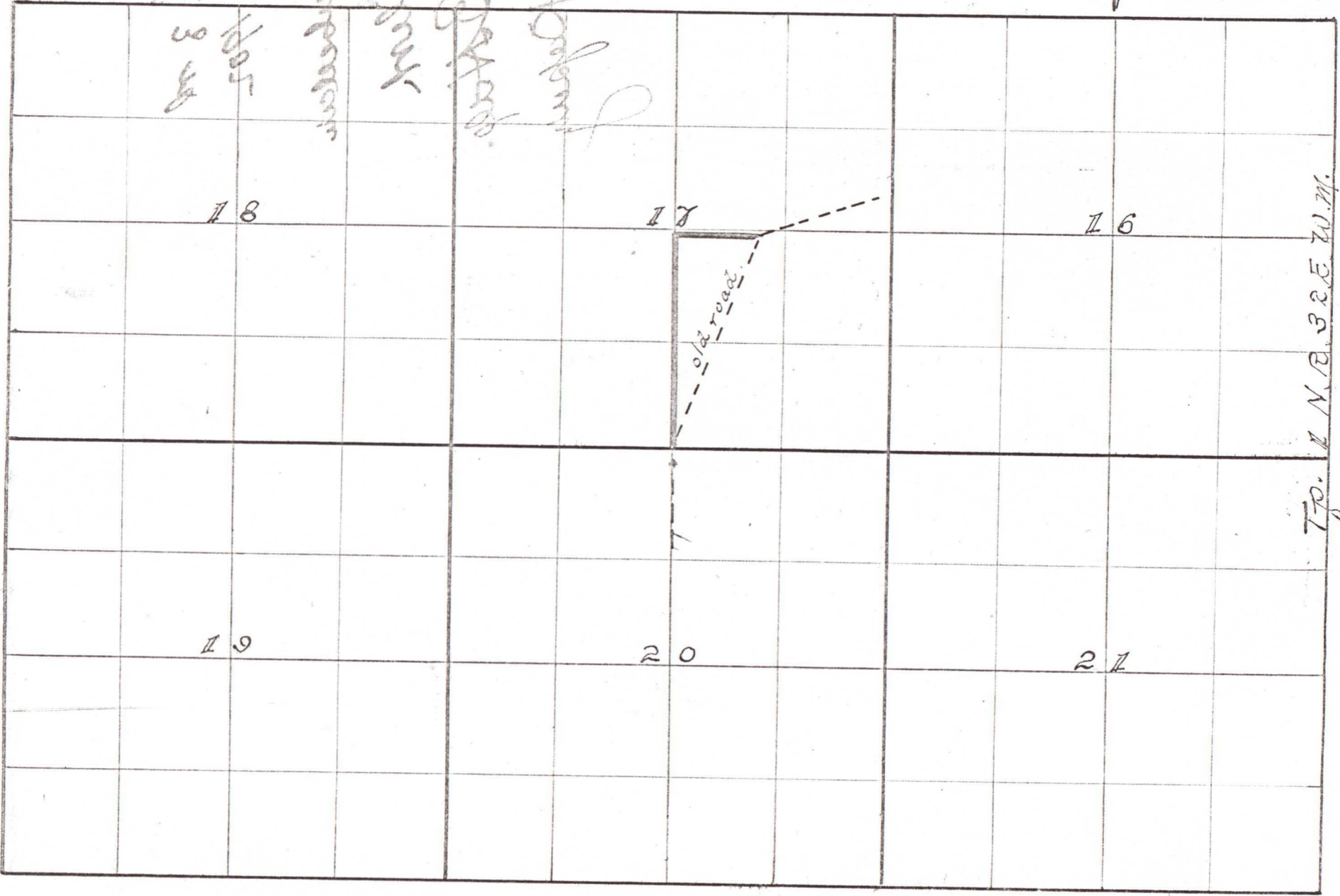
I hereby certify that the foregoing is a true and correct copy of Field notes of Survey of Change in Road # as made by me Feb 25, 1902.

C. E. Macomber.
County Surveyor.
Maricopa County.

ROAD No 161
CHANGE

$20^{\circ} 21' 30'' E$

Handwritten notes:
161
161
161
161
161
161



Scale 25 Chains = 1. inch.

161