

ROAD NO

161 change

In the matter of viewing, surveying and laying out County Road No

Commencing on the present County Road at or near the N.E. corner of Sec 17 T_p 1 N R 32 E, Thence running South 20 feet west of and parallel to the line between secs 16 and 17 about 150 rods, thence south of west, intersecting the above county road at or near the center of the E 1/2 Sec 17 T_p 1 N R 32 E W M and to vacate that part of County Road intervening between the place of beginning and the point of intersection. Said road to be forty feet wide

- Report of Viewers -

We, the undersigned viewers heretofore appointed to view and locate Road No submit the following report: Pursuant to an order of the Honorable Court we met John W Kimbrell, surveyor, at S P Hutchinson's House on the 25th day of October, 1894, and were by him, each, duly sworn to faithfully and impartially discharge the duties of our appointments. We called to our aid Paul Wittock and Geo P Goldsby, chainman, who were by the surveyor each duly sworn. We viewed, surveyed, and located said Road No as specified in our order and find the same to be practicable. The same being all on the lands of S P Hutchinson, the Petitioner, and does not materially increase the distance, nor does it injure or inconvenience the public. We would therefore recommend it be declared a public highway, as it is now in as good condition as the present traveled road

George P Goldsby

S P Earl

Henry Mahler

} Viewers Road Survey No

Field Notes

of S P Hutchinson's Road

Commencing at a point 20 feet west of the northeast corner of Sec 17 in T_p 1 N R 32 E. W. M. Set post four feet long and four inches square at corner 20 feet east of initial point marked "X" raised mound of earth with posts north and south of post. Thence south 20 feet west of sec line bet secs 16 & 17 32.12 chains A 1, Thence S 58° 22' W 3.71 chains A 2. Thence S 72° 20' W 18.90 chains, intersecting County Road. Set post 4 feet long and four inches square marked

"R J" raised mound of earth with pits E + W of post, all the above points and places being in Sec 17 T 1 N R 32 E W 77. The whole distance being 54.73 chains, and the whole distance of the present county road to be vacated is 46.00 chains

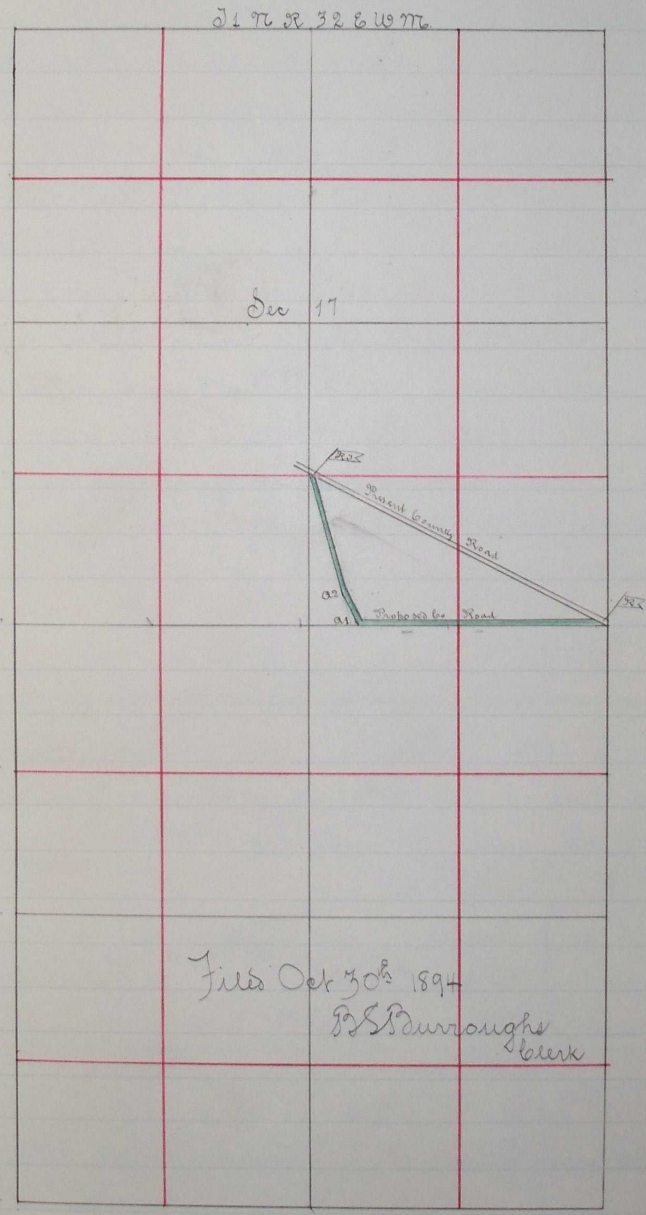
J W Kimbrell

Filed Oct 30th 1894

B S Burroughs, clerk

County Surveyor

Plat of County Road 77



Filed Oct 30th 1894

B S Burroughs
clerk

I hereby certify that the within field notes and accompanying plat is correct to the best of my belief

John W Kimbrell
County Surveyor

and
or near
running
in sec
intersecting
of the E 1/2
part of
ring and
wide
ted to
report:
met
houses on
duly
duties
Witlock
surveyor
said
same
side of
aterially
measured
it be
ood con-
urvey 77
theast
ur fast
of initial
ark and
set sec
1/2 chains
County
marked