

ROAD No  
203.

Report of Viewers, Field Notes and Plat of Survey of change in  
County Road extending from Heppner to Echo  
Road No 203.

Viewers Report on Road No 203.

To the Hon Co Court for Umatilla County, Oregon.

We the undersigned being appointed by your Honorable Body to  
view out a change in a County Road leading from Heppner to Echo, in  
Umatilla County,

We met at the time and place appointed by you and was duly qualified  
by W. W. Caviness Surveyor, we proceeded to view and survey said proposed  
Road as set forth in the order as shown in the field notes of said Survey.

We find the change in said Road to be a good practicable route for a County Road  
and can be opened without any expense to the County, we would ask that the  
petition for the same be granted

This the 7<sup>th</sup> day of June 1884

O. F. Thompson

A. Jenkins

Field Notes of Road Survey No 203

To the Hon County Court for Umatilla County, Oregon.

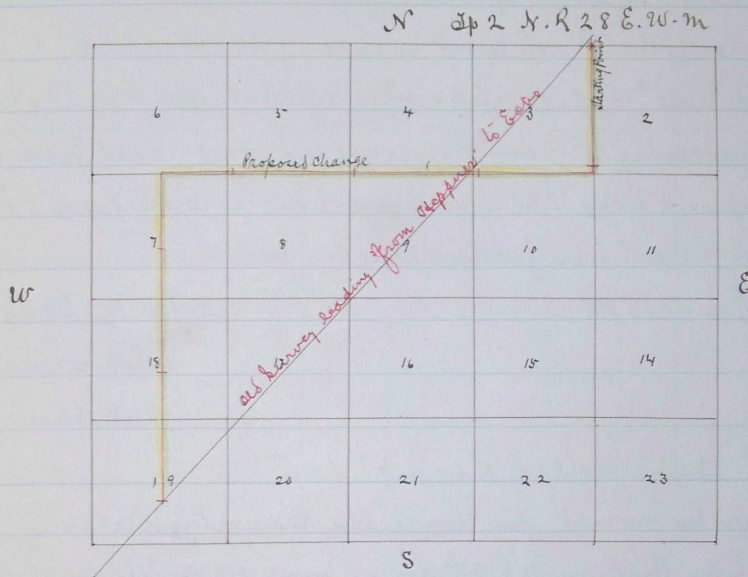
I hereby certify that on the 7<sup>th</sup> day of June 1884 after qualifying H. Caplinger  
and J. E. Luis as Chaimen under directions of Road Viewers O. F. Thompson and A.  
Jenkins, I proceeded to survey of a change in a County Road as described in  
the accompanying field notes of survey.

Beginning at the N. E. corner of Sec 3 T<sup>2</sup> S<sup>2</sup> R 28 E. set post marked R,  
run South on line between Sec 2 & 3. 320 rods set post M. 1. Run South on same  
line 3 Rods to S. E. corner of Sec 3. thence West on line between Sec 2 & 10. 317 Rods  
set post M. 2. Run W. on line between Sec 4 & 9. 320 Rods. set post M. 3.  
Run W. on line between Sec 5 & 8. 320 Rods set post M. 4. Run West on line  
between Sec 6 & 7. 156 Rods to the  $\frac{1}{4}$  Sec corner between Sec 6 & 7. thence South on  $\frac{1}{2}$   
mill line through Sec 7. 164 Rods set post M. 5. Run South on  $\frac{1}{2}$  mill line  
320 Rods set post Miles 6. Run South on same line to near the center of  
Sec 19. 320 Rods set post Miles 7 to intersection of County Road leading  
from Heppner to Echo

Surveyed June 7<sup>th</sup> 1884

By W. W. Caviness,

# Plat of Road No 203.



Scale 1 Inch to the mile.

I hereby certify that this is a true Plat of Road

Journal "F" page 400

Survey No 203.

" " " " 448

Surveyed June 7<sup>th</sup> 1884

Recorded Aug 16<sup>th</sup> 1884

By W. W. Caviness,

J. P. Bushee

Clerk.