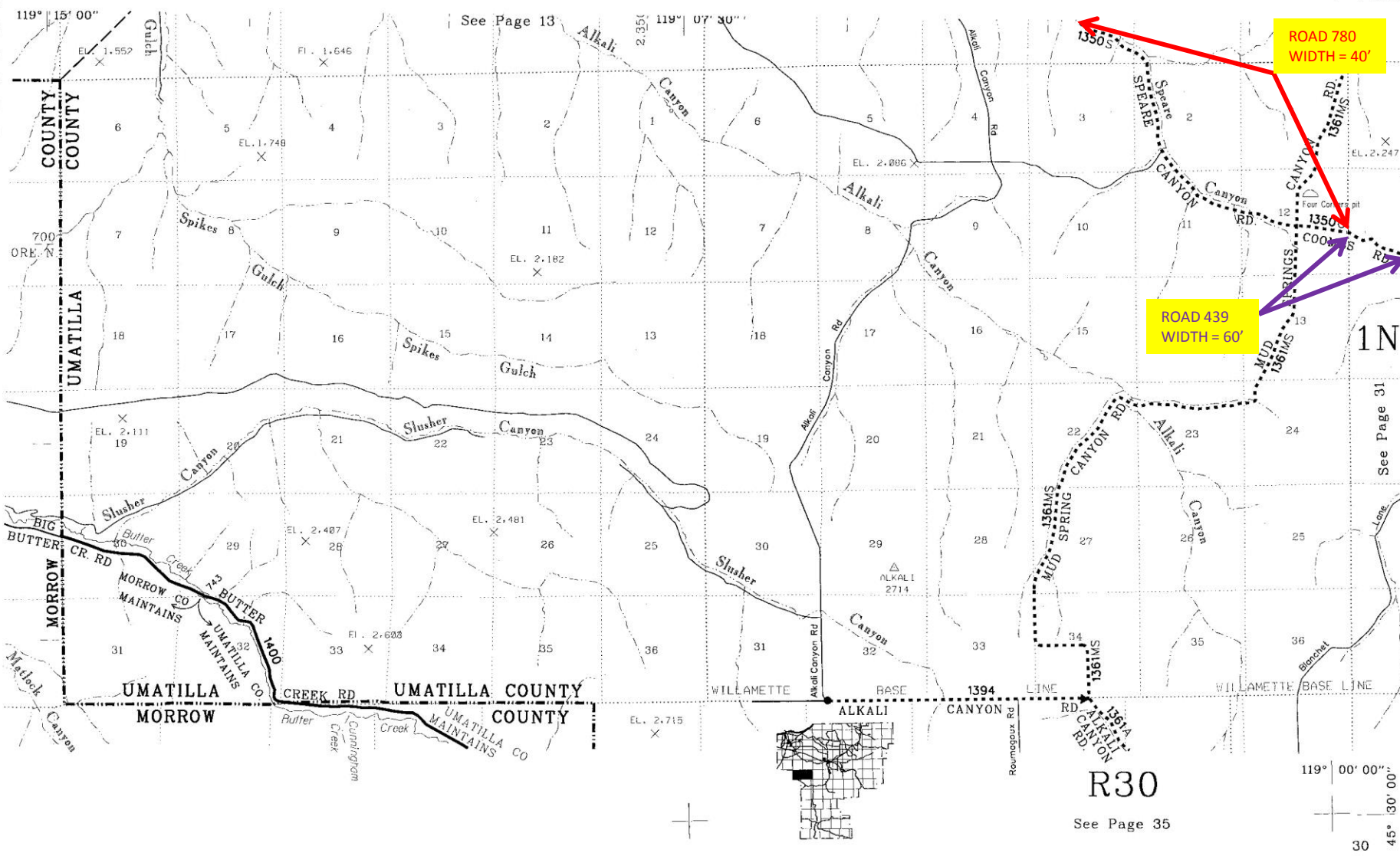


ROAD 314
WIDTH = 60'

ROAD 780
WIDTH = 40'

R29

R30



ROAD 780
WIDTH = 40'

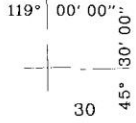
ROAD 439
WIDTH = 60'

1N

See Page 31

R30

See Page 35



30 45°

See Page 13

119° 15' 00"

119° 07' 30"

COUNTY COUNTY
UMATILLA

UMATILLA

MORROW

UMATILLA COUNTY MORROW

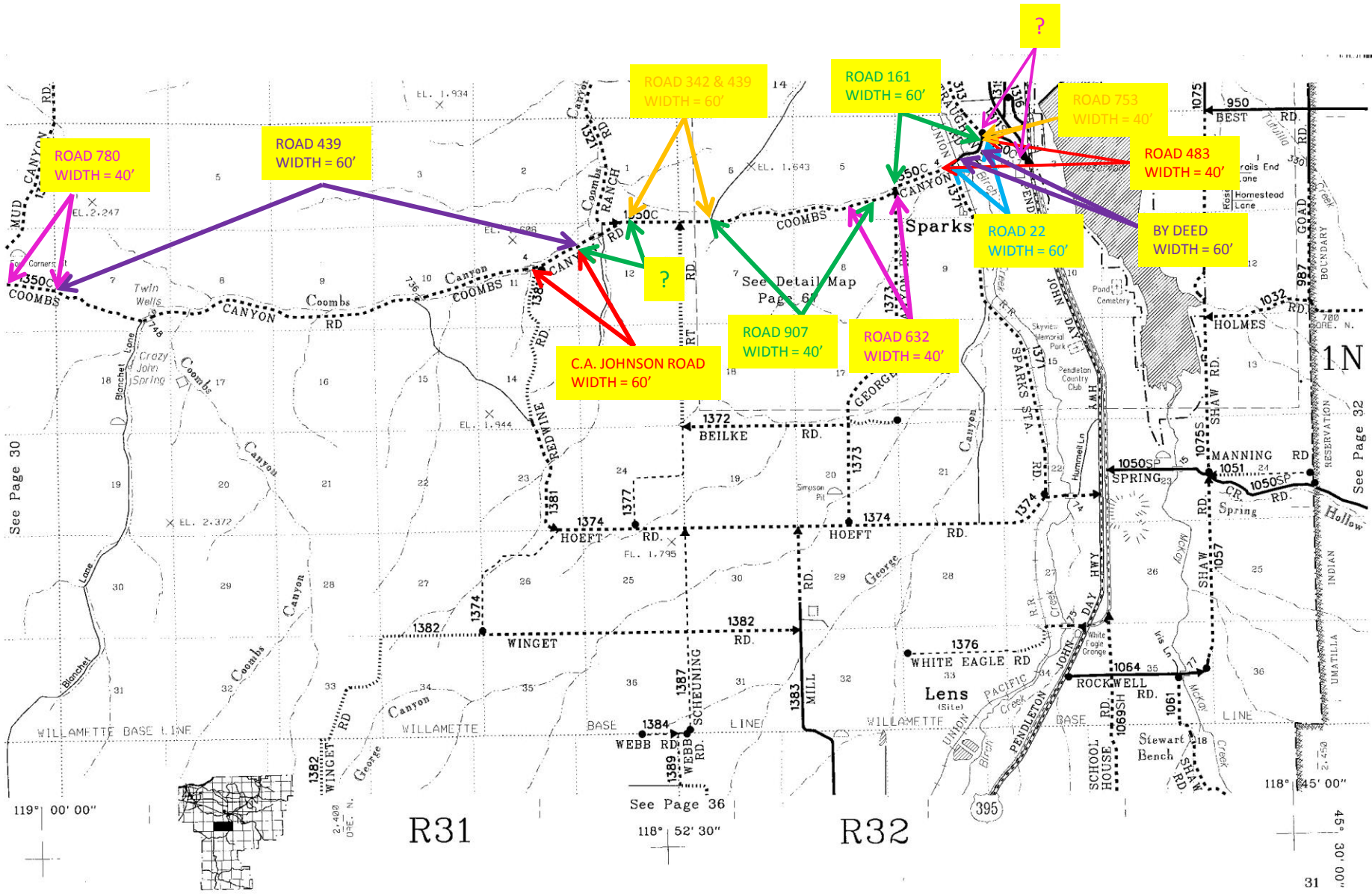
WILLAMETTE BASE LINE



119° 00' 00"

45° 30' 00"

30



ROAD 780
WIDTH = 40'

ROAD 439
WIDTH = 60'

ROAD 342 & 439
WIDTH = 60'

ROAD 161
WIDTH = 60'

ROAD 753
WIDTH = 40'

ROAD 483
WIDTH = 40'

ROAD 22
WIDTH = 60'

BY DEED
WIDTH = 60'

C.A. JOHNSON ROAD
WIDTH = 60'

ROAD 907
WIDTH = 40'

ROAD 632
WIDTH = 40'

?

?

See Page 30

See Detail Map
Page 6

See Page 32



R31

R32

See Page 36