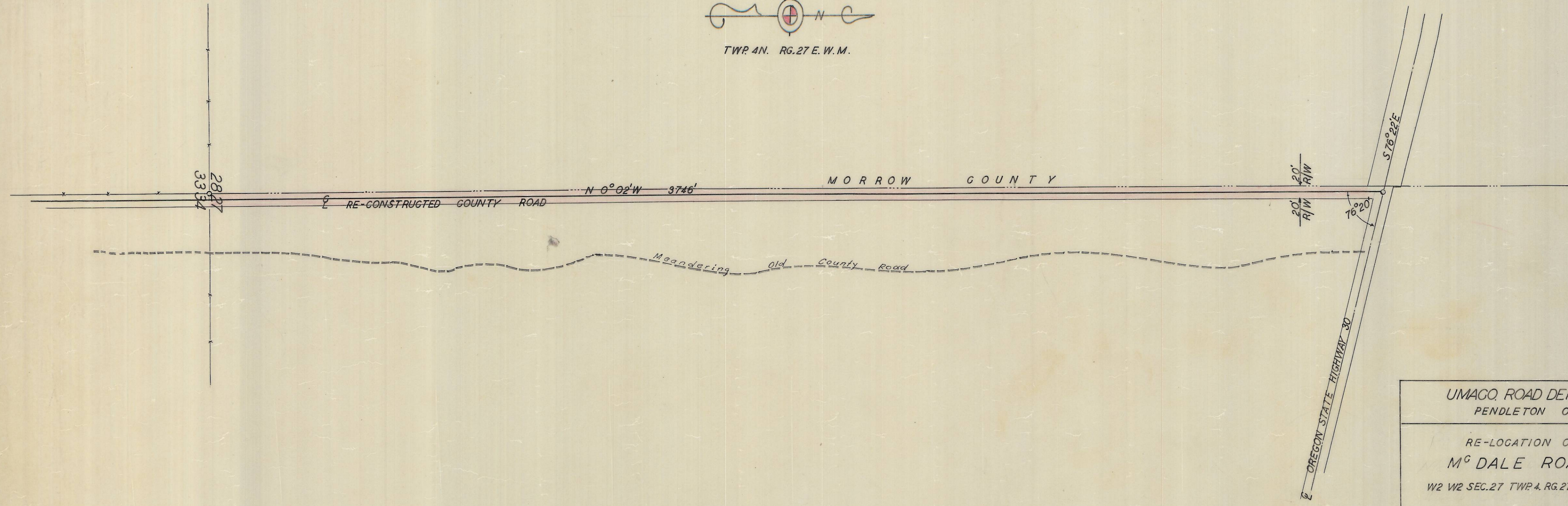
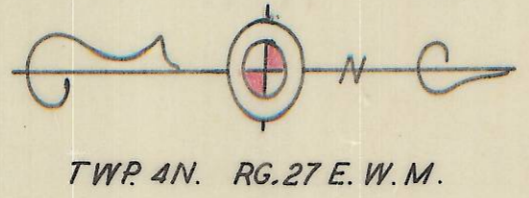


NO 2-1
MAY 1955
BY J.J.



UMAGO ROAD DEPARTMENT PENDLETON OREGON	
RE-LOCATION OF M ^C DALE ROAD W2 W2 SEC. 27 TWP. 4. RG. 27 E. W. M.	SHEET NO. 1 OF 1
DRAWN BY J.J. CHECKED BY V.E.W.	SCALE: 1" = 200' APPROVED V.E.W.
SURVEYED BY V.E.W. FIELD BOOK 6 PG. 78 DATE 3-18-55	

4 copies
(prints)

Box "cc"
File 5-7
MURPHY
W-10010