

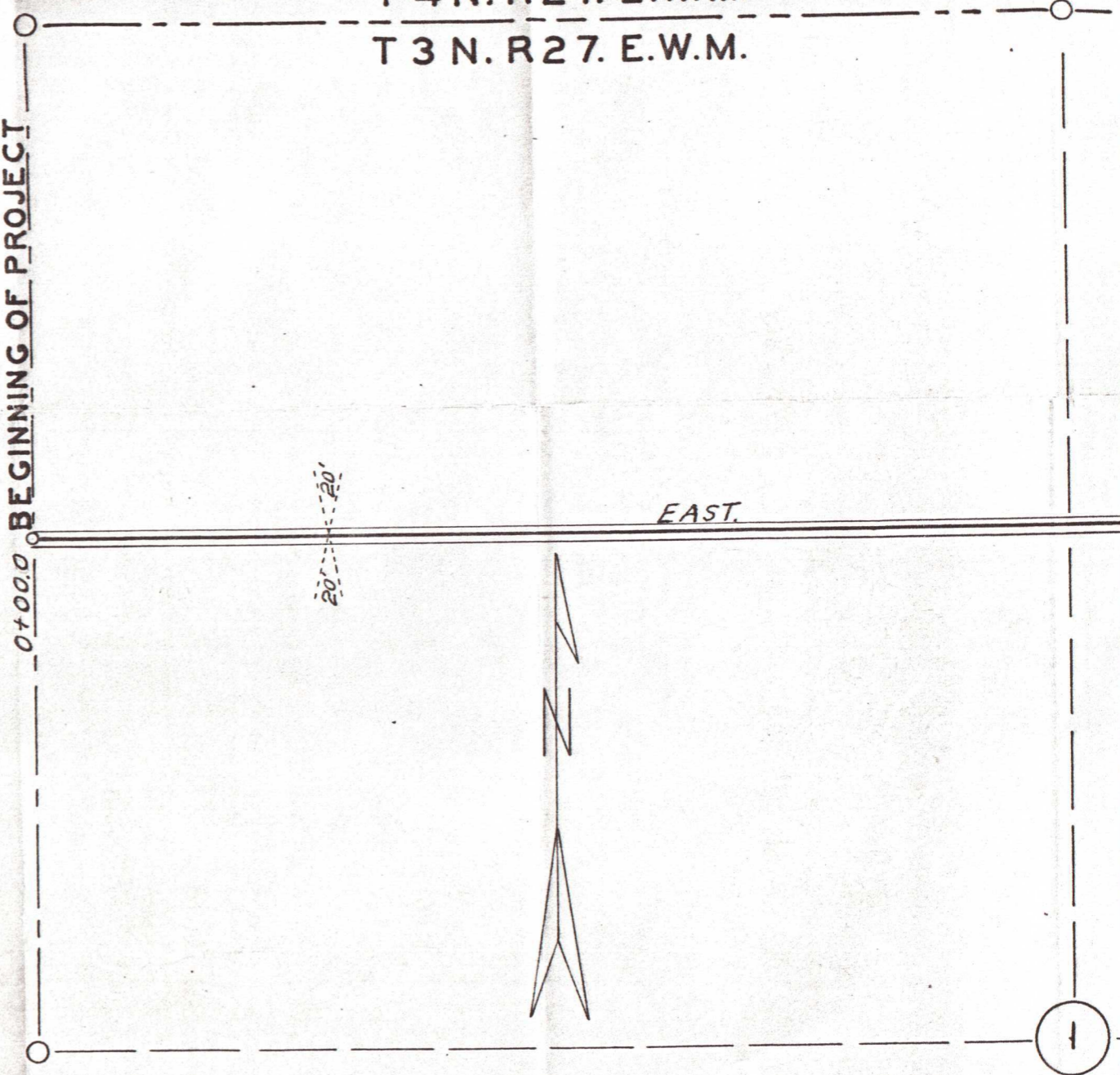
MATILLA COUNTY OREGON
COUNTY ENGINEERS OFFICE
UNTY ROAD NO. 854
LOCATED LINE
E I I N. = 400 FT. T 3 N. R 27. E. W. M.

BEGINNING OF PROJECT
0+00.0

T 4 N. R 27. E. W. M.
T 3 N. R 27. E. W. M.

EAST.

20' 20'



BEGINNING OF PROJECT

T 4 N. R 27. E. W. M.

T 3 N. R 27. E. W. M.

59+166 P.O.T.

EN

58+01.4 P.T.

52+11.6 P.C.
10° C.L.
4:58'59"

N59°04'E

36+69.1 P.C.

10° C.L.
4:30'56"

39+78.4 P.T.

EAST.

20' ±

T 3 N. R 27. E. W. M.

T 3 N. R 28. E. W. M.

N0°05'E

0+00.0

