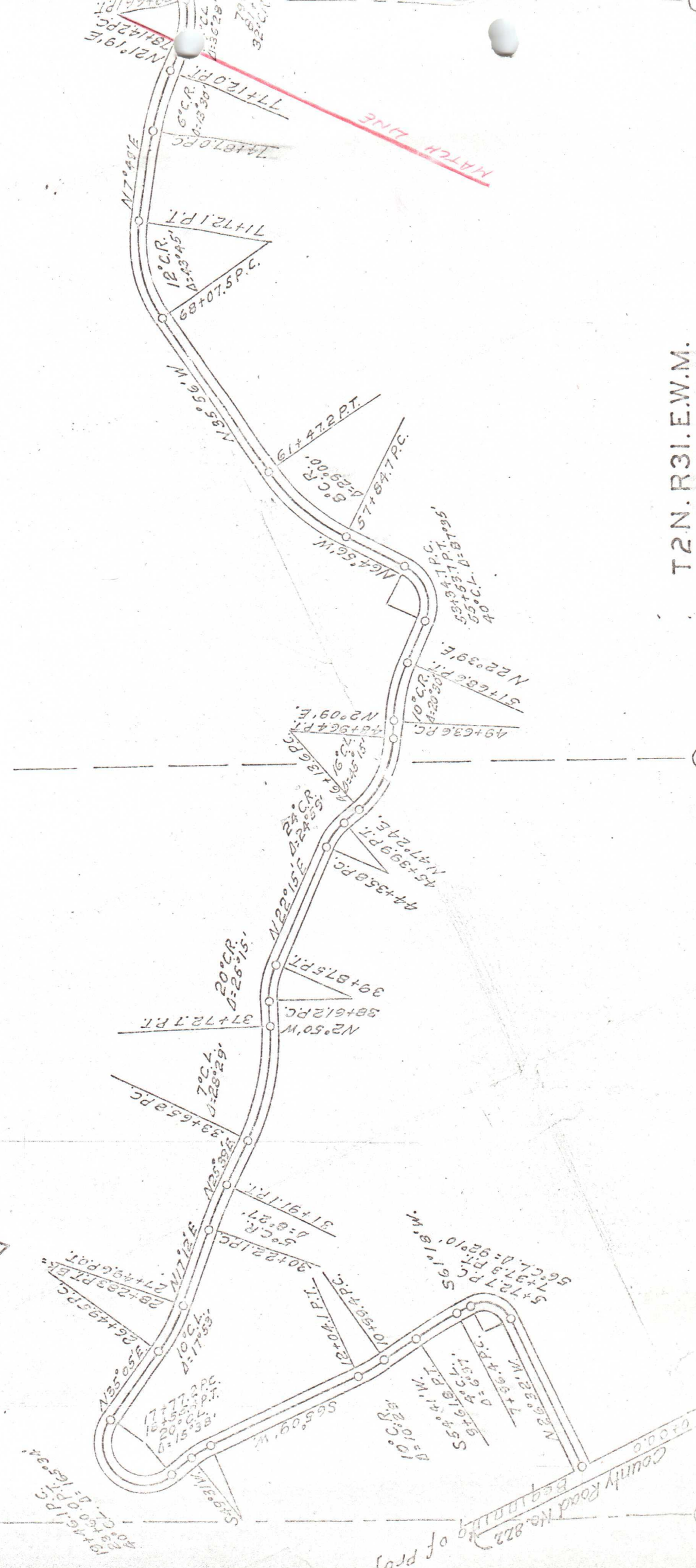


EQUATION

12



T2N. R31.E.W.M.

T2N. R32.E.W.M.

93+9
98+1
99+1
36°11'R



N159°10'W

127+24.5A
2°31'RT

121+18.0 P.T.
4° C.L.
D=23°35'

115+284 P.C.

N38°06'W

111+42.8 P.T.
N61°41'W

108+95.52 P.C.
S62°11'W

104+25.3 P.C.
37° C.L. D=67°16'

N50°33'W
N79°50'W

106+19.1 P.C.
40° C.R. D=50°00'

103+39.3 P.C.
36° C.R. D=29°22'

100+78.3 P.C.

N48°37'W
100+69.8 P.T.

99+74.2 P.C.

N72°05'W

93+92.7 P.C.
36° C.R. D=78°25'

S23°30'W

90+48.2 P.C.
32° C.R. D=50°54'

N54°36'W
88+87.8 P.T.
20° C.R. D=74°10'

85+17.0 P.C.
S51°14'W

N15°09'W
79+66.1 P.T.
N21°19'E

78+42.2 P.C.
N21°19'E

77+12.0 P.T.
24° C.L. D=36°28'

N17°49'E
74+67.0 P.C.

71+12.0 P.T.
6° C.R. D=13°30'

71+12.0 P.T.
S10°10'W

Sealed