

5
8

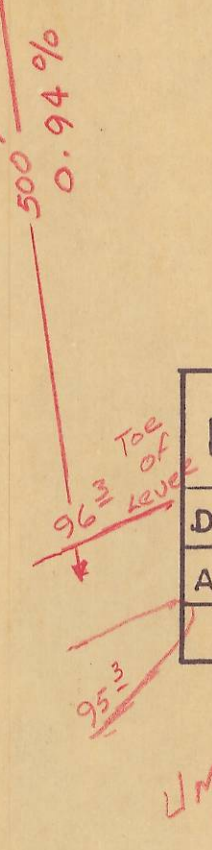
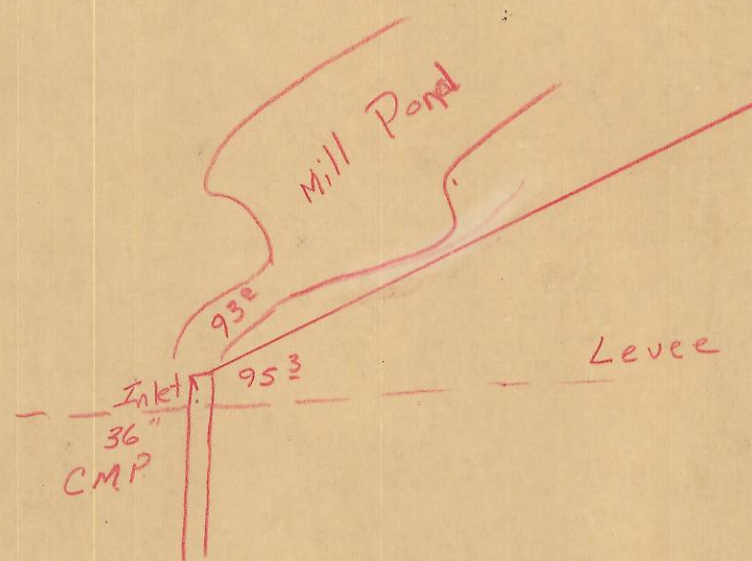
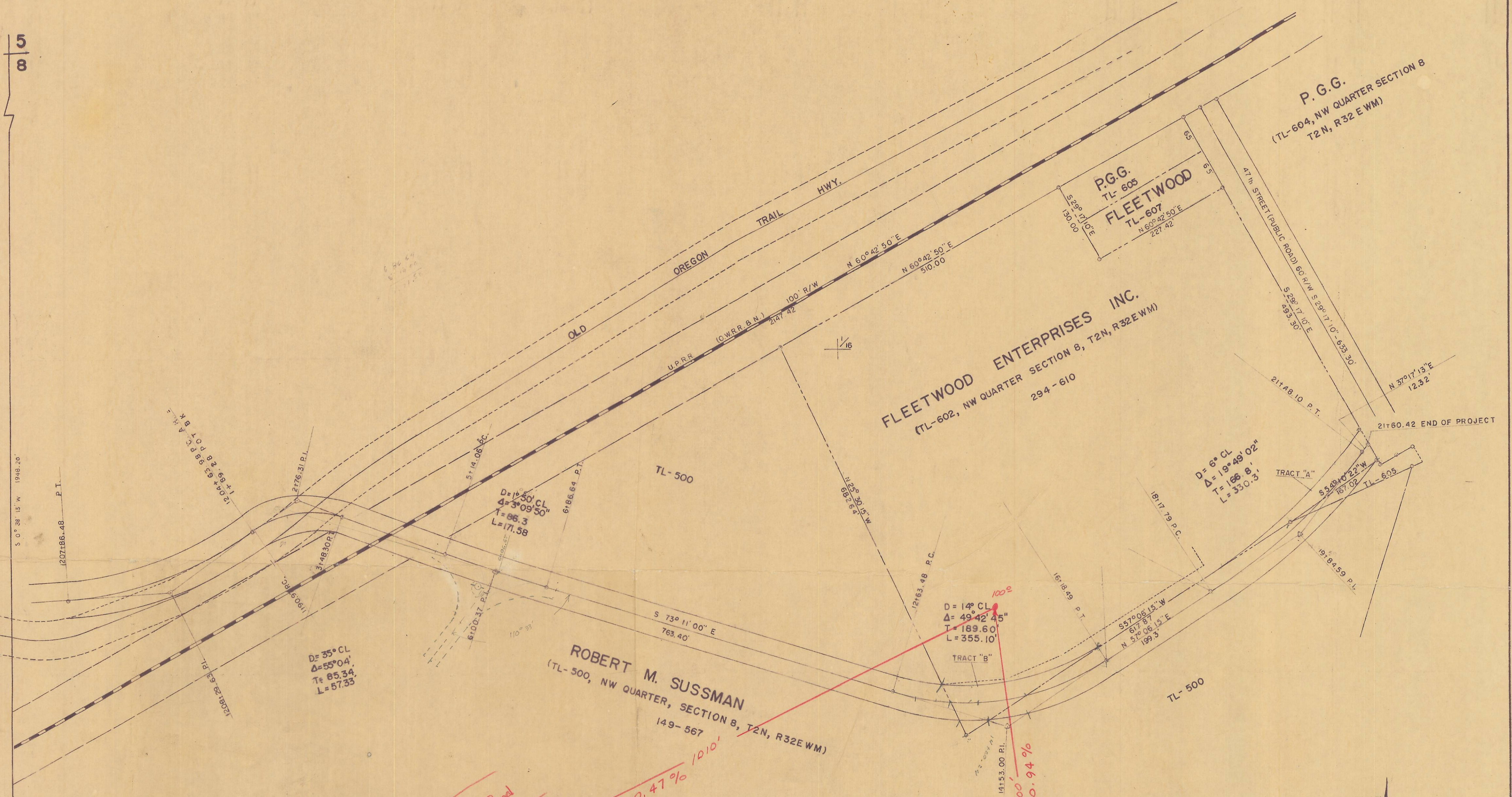
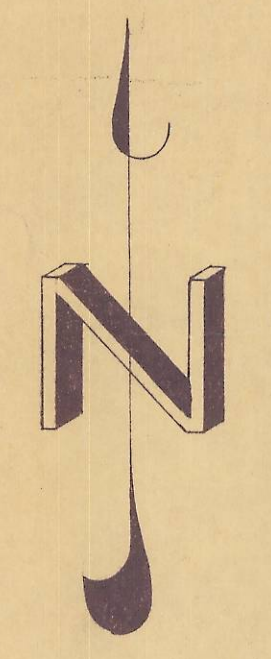
P.G.G.
(TL-604, NW QUARTER SECTION 8
T2N, R32E WM)

P.G.G.
TL-605
FLEETWOOD
TL-607

FLEETWOOD ENTERPRISES INC.
(TL-602, NW QUARTER SECTION 8, T2N, R32E WM)
294 - 610

ROBERT M. SUSSMAN
(TL-500, NW QUARTER, SECTION 8, T2N, R32E WM)
149 - 567

PROWLER ACCESS ROAD	
DATE: 3/17/72	SCALE: 1" = 100'
APPROVED: _____	BOX: _____



2000 Survey

Box 567

1304