

POINT #	DESCRIPTION	NORTHING	EASTING
8	C 1/4 CORNER SECTION 7	49636.13	29271.18
14	WELLS GPS PIN STATION 67	48337.14	27392.19
15	100+00 CL MONUMENT MORROW ST.	48091.69	27083.05
16	FND HADDOCK PIN #1	49632.05	29781.67
17	FND HADDOCK PIN #2	49304.12	29268.10
19	104+84.36 30.00' LT	48352.51	27493.41
35	136+59.14 43.61' LT	49974.86	30196.54
36	132+76.49 44.45' LT	49764.44	29885.39
37	128+46.56 35.72' LT	49576.24	29498.32
38	126+57.66 42.64' LT	49456.34	29342.79
39	124+39.02 52.68' LT	49338.98	29169.46
40	122+79.40 57.58' LT	49273.42	29031.62
41	119+90.87 37.35' LT	49137.43	28776.35
42	125+65.04 51.87' LT	49406.33	29268.93
43	129+73.28 37.74' LT	49633.38	29615.84
85	100+80.52 PC CL	48136.91	27149.66
87	103+12.21 PT CL	48251.76	27350.53
88	104+89.14 PC CL	48327.43	27510.56
90	106+46.63 PT CL	48408.32	27645.38
91	110+16.65 PC CL	48628.95	27942.44
93	110+87.57 PT CL	48668.35	28001.37
94	116+81.39 PC CL	48973.55	28510.76
96	117+50.31 PT CL	49005.33	28571.87
97	122+95.87 PC CL	49227.54	29070.12
99	127+19.29 PRC CL	49467.60	29415.91
101	128+98.82 PT CL	49568.91	29562.80
102	131+47.57 PC CL	49668.82	29790.60
104	135+14.36 PT CL	49853.19	30106.77
105	137+43.88 PC CL	49990.73	30290.51
122	100+00.00 POT 30.00' LT	48116.51	27066.20
123	100+80.52 PC 30.00' LT	48161.73	27132.81
124	103+12.21 PT 30.00' LT	48278.88	27337.79
125	104+89.14 PC 30.00' LT	48362.71	27493.86
126	106+46.63 PT 30.00' LT	48442.38	27620.09
127	110+16.65 PC 35.22' LT	48657.22	27921.44
128	110+87.57 PT 37.97' LT	48700.92	27981.85
129	116+81.39 PT 41.62' LT	49009.25	28489.37
130	117+50.31 PT 37.22' LT	49039.33	28556.71
131	122+95.87 PT 57.98' LT	49280.50	29046.51
132	127+19.29 PC 06' LT	49492.87	29390.19
133	128+98.82 PC 34.81' LT	49600.79	29548.82
134	131+47.57 PC 44.58' LT	49709.64	29772.70
135	135+14.36 PC 50.55' LT	49893.66	30076.48

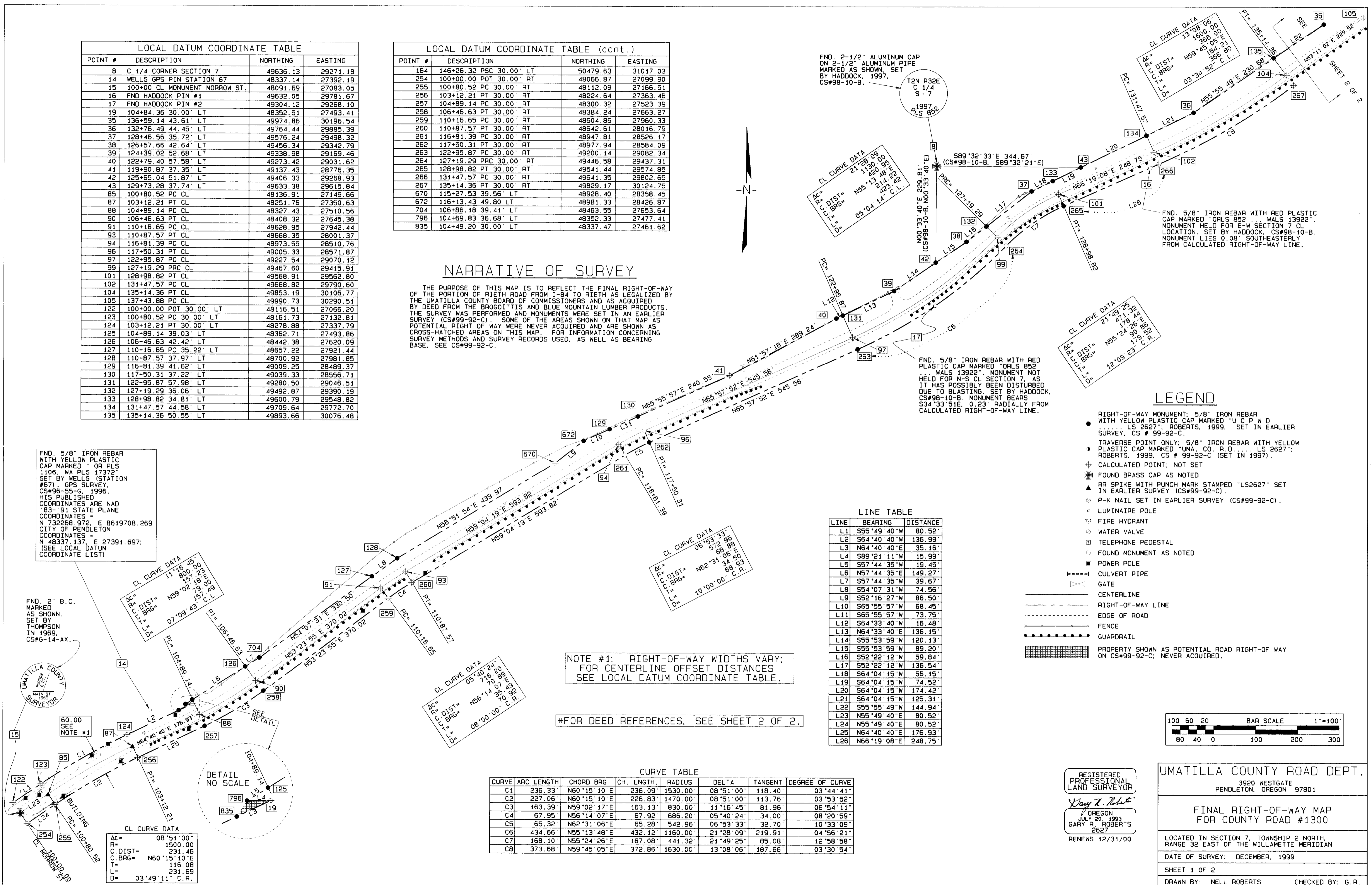
POINT #	DESCRIPTION	NORTHING	EASTING
164	146+26.32 PSC 30.00' LT	50479.63	31017.03
254	100+00.00 POT 30.00' RT	48066.87	27099.90
255	100+80.52 PC 30.00' RT	48112.09	27166.51
256	103+12.21 PT 30.00' RT	48224.64	27363.46
257	104+89.14 PC 30.00' RT	48300.32	27523.39
258	106+46.63 PT 30.00' RT	48384.24	27663.27
259	110+16.65 PC 30.00' RT	48604.86	27960.33
260	110+87.57 PT 30.00' RT	48642.61	28016.79
261	116+81.39 PC 30.00' RT	48947.81	28526.17
262	117+50.31 PT 30.00' RT	48977.94	28584.09
263	122+95.87 PC 30.00' RT	49200.14	29082.34
264	127+19.29 PRC 30.00' RT	49446.58	29437.31
265	128+98.82 PT 30.00' RT	49541.44	29574.85
266	131+47.57 PC 30.00' RT	49541.35	29802.65
267	135+14.36 PT 30.00' RT	49829.17	30124.75
670	115+27.53 39.56' LT	48928.40	28358.45
672	116+13.43 49.80' LT	48981.33	28426.87
704	106+86.18 39.41' LT	48463.55	27653.64
796	104+69.83 36.68' LT	48352.33	27477.41
835	104+49.20 30.00' LT	48337.47	27461.62

NARRATIVE OF SURVEY

THE PURPOSE OF THIS MAP IS TO REFLECT THE FINAL RIGHT-OF-WAY OF THE PORTION OF RIETH ROAD FROM I-84 TO RIETH AS LEGALIZED BY THE UMATILLA COUNTY BOARD OF COMMISSIONERS AND AS ACQUIRED BY DEED FROM THE BROGOITTS AND BLUE MOUNTAIN LUMBER PRODUCTS. THE SURVEY WAS PERFORMED AND MONUMENTS WERE SET IN AN EARLIER SURVEY (CS#99-92-C). SOME OF THE AREAS SHOWN ON THAT MAP AS POTENTIAL RIGHT OF WAY WERE NEVER ACQUIRED AND ARE SHOWN AS CROSS-HATCHED AREAS ON THIS MAP. FOR INFORMATION CONCERNING SURVEY METHODS AND SURVEY RECORDS USED, AS WELL AS BEARING BASE. SEE CS#99-92-C.

FND. 5/8" IRON REBAR WITH YELLOW PLASTIC CAP MARKED "OR PLS 1106 WA PLS 17372" SET BY WELLS STATION #67 GPS SURVEY, CS#96-55-G, 1996. HIS PUBLISHED COORDINATES ARE NAD 83-91 STATE PLANE COORDINATES = N 732268.972, E 8619708.269 CITY OF PENDLETON COORDINATES = N 48337.137, E 27391.697; (SEE LOCAL DATUM COORDINATE LIST)

FND. 2" B.C. MARKED AS SHOWN. SET BY THOMPSON IN 1969. CS#6-14-AX.



FND. 2-1/2" ALUMINUM CAP ON 2-1/2" ALUMINUM PIPE MARKED AS SHOWN. SET BY HADDOCK, 1997. CS#98-10-B.

FND. 5/8" IRON REBAR WITH RED PLASTIC CAP MARKED "ORLS 892" SET BY HADDOCK, 1997. CS#98-10-B. MONUMENT LIES 0.08' SOUTHEASTERLY FROM CALCULATED RIGHT-OF-WAY LINE.

FND. 5/8" IRON REBAR WITH RED PLASTIC CAP MARKED "ORLS 892" SET BY HADDOCK, 1997. CS#98-10-B. MONUMENT BEARS S54°33'51"E, 0.23' RADIALLY FROM CALCULATED RIGHT-OF-WAY LINE.

LEGEND

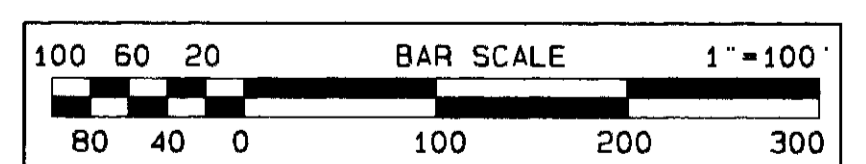
- RIGHT-OF-WAY MONUMENT: 5/8" IRON REBAR WITH YELLOW PLASTIC CAP MARKED "U.C.P.W.D. LS 2627"; ROBERTS, 1999. SET IN EARLIER SURVEY, CS # 99-92-C.
- TRAVERSE POINT ONLY: 5/8" IRON REBAR WITH YELLOW PLASTIC CAP MARKED "UMA, CO. R.D. ... LS 2627"; ROBERTS, 1999. CS # 99-92-C (SET IN 1997).
- + CALCULATED POINT; NOT SET
- FOUND BRASS CAP AS NOTED
- ▲ RR SPIKE WITH PUNCH MARK STAMPED "LS2627" SET IN EARLIER SURVEY (CS#99-92-C).
- P-K NAIL SET IN EARLIER SURVEY (CS#99-92-C).
- LUMINAIRE POLE
- FIRE HYDRANT
- WATER VALVE
- TELEPHONE PEDESTAL
- FOUND MONUMENT AS NOTED
- POWER POLE
- CULVERT PIPE
- GATE
- CENTERLINE
- RIGHT-OF-WAY LINE
- EDGE OF ROAD
- FENCE
- GUARDRAIL
- ▨ PROPERTY SHOWN AS POTENTIAL ROAD RIGHT-OF WAY ON CS#99-92-C; NEVER ACQUIRED.

LINE	BEARING	DISTANCE
L1	S55°49'40"W	80.52'
L2	S64°40'40"W	136.99'
L3	S64°40'40"E	35.16'
L4	S89°21'11"W	15.99'
L5	S57°44'35"W	19.45'
L6	S57°44'35"E	149.27'
L7	S57°44'35"W	39.67'
L8	S54°07'31"W	74.56'
L9	S52°16'27"W	86.50'
L10	S65°55'57"W	68.45'
L11	S65°55'57"W	73.75'
L12	S64°33'40"W	16.48'
L13	N64°33'40"E	136.15'
L14	S55°53'59"W	120.13'
L15	S55°53'59"W	89.20'
L16	S52°22'12"W	59.84'
L17	S52°22'12"W	136.54'
L18	S64°04'15"W	56.15'
L19	S64°04'15"W	74.52'
L20	S64°04'15"W	174.42'
L21	S64°04'15"W	125.31'
L22	S55°55'49"W	144.94'
L23	N55°49'40"E	80.52'
L24	N55°49'40"E	80.52'
L25	N64°40'40"E	176.93'
L26	N66°19'08"E	248.75'

NOTE #1: RIGHT-OF-WAY WIDTHS VARY; FOR CENTERLINE OFFSET DISTANCES SEE LOCAL DATUM COORDINATE TABLE.

*FOR DEED REFERENCES, SEE SHEET 2 OF 2.

CURVE	ARC LENGTH	CHORD BRG	CH. LNTH.	RADIUS	DELTA	TANGENT	DEGREE OF CURVE
C1	236.33'	N60°15'10"E	236.09'	1530.00'	08°51'00"	118.40'	03°44'41"
C2	227.06'	N60°15'10"E	226.83'	1470.00'	08°51'00"	113.76'	03°53'52"
C3	163.39'	N59°02'17"E	163.13'	830.00'	11°16'45"	81.96'	06°54'11"
C4	67.95'	N56°14'07"E	67.92'	686.20'	05°40'24"	34.00'	08°20'59"
C5	65.32'	N62°31'06"E	65.28'	542.96'	06°53'33"	32.70'	10°33'09"
C6	434.66'	N55°13'48"E	432.12'	1160.00'	21°28'09"	219.91'	04°56'21"
C7	168.10'	N55°24'26"E	167.08'	441.32'	21°49'25"	85.08'	12°58'58"
C8	373.68'	N59°45'05"E	372.86'	1630.00'	13°08'06"	187.66'	03°30'54"



REGISTERED PROFESSIONAL LAND SURVEYOR
Gary R. Roberts
 GARY R. ROBERTS
 2627
 RENEWS 12/31/00

UMATILLA COUNTY ROAD DEPT.
 3920 WESTGATE
 PENDLETON, OREGON 97801

FINAL RIGHT-OF-WAY MAP
 FOR COUNTY ROAD #1300

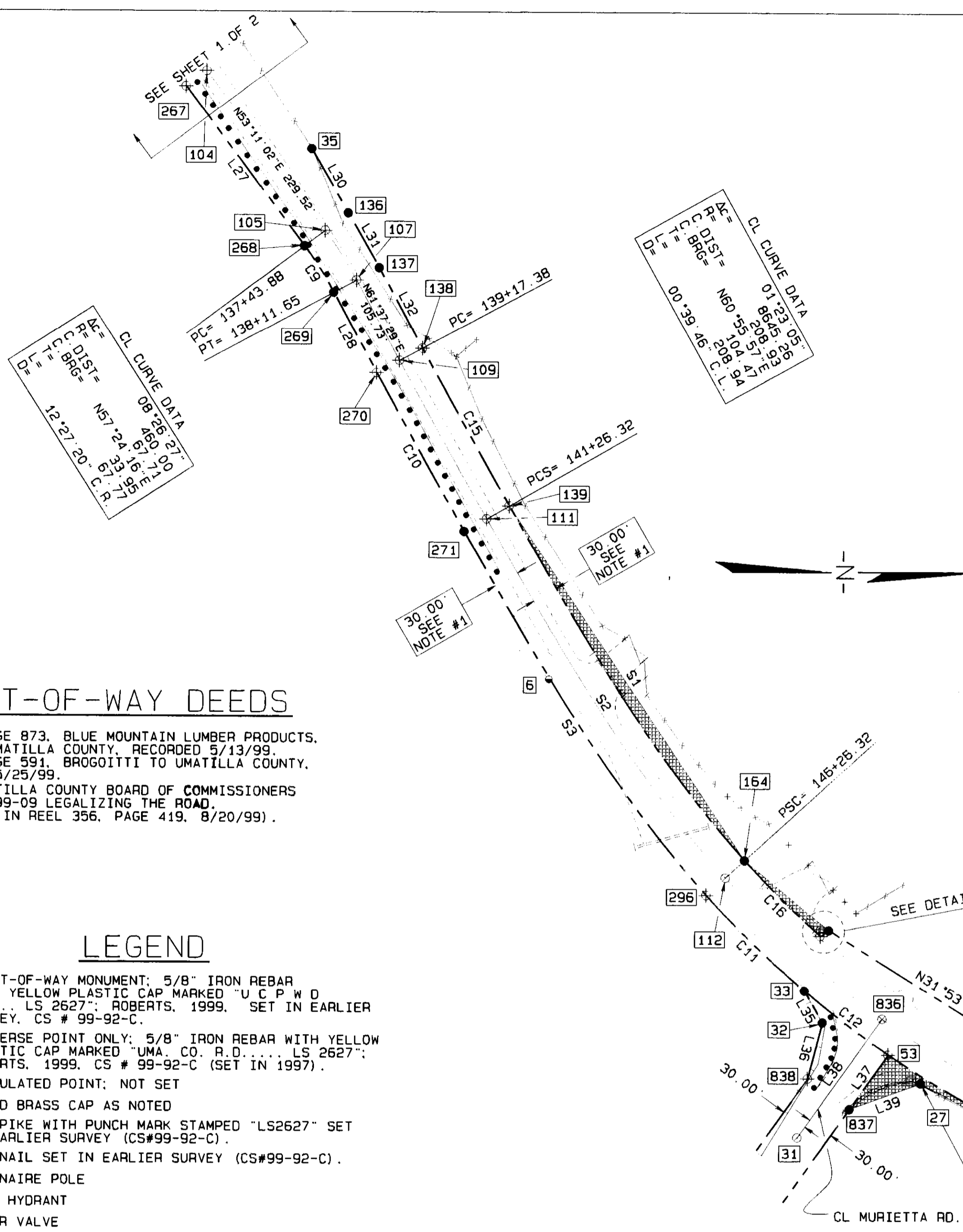
LOCATED IN SECTION 7, TOWNSHIP 2 NORTH,
 RANGE 32 EAST OF THE WILLAMETTE MERIDIAN

DATE OF SURVEY: DECEMBER, 1999

SHEET 1 OF 2

DRAWN BY: NELL ROBERTS CHECKED BY: G.R.

RECEIVED BY
 Umatilla County Surveyor
 Date: 12-27
 20-315-C



SPIRAL CURVE TABLE

CURVE	ARC LENGTH	BEARING	CH. LENGTH
S1	493.46	N56°06'10"E	492.42
S2	500.00	N56°04'30"E	498.94
S3	506.54	N56°02'53"E	505.47
S4	493.46	N11°08'37"E	492.42
S5	500.00	N11°10'17"E	498.94
S6	506.54	N11°11'54"E	505.47
S7	408.38	N12°23'27"E	405.95
S8	400.00	N12°20'10"E	398.62
S9	391.62	N12°16'45"E	390.27
S10	23.97	N55°54'33"E	23.96
S11	59.87	N57°22'15"E	59.86

LINE TABLE

LINE	BEARING	DISTANCE
L27	N53°11'02"E	229.52
L28	N61°37'29"E	105.73
L29	N07°00'23"E	182.86
L30	S60°04'05"W	85.36
L31	S60°04'05"W	72.45
L32	S61°37'29"W	105.73
L33	N32°15'51"W	11.83
L34	S07°00'23"W	182.86
L35	N60°11'24"E	42.29
L36	S75°23'16"E	66.80
L37	S54°30'00"E	77.46
L38	S54°30'00"E	169.12
L39	N19°54'54"W	88.19
L40	N27°55'12"E	160.03
L41	N16°46'08"E	90.08

CURVE TABLE

CURVE	ARC LENGTH	CHORD BRG	CH. LNTH.	RADIUS	DELTA	TANGENT	DEGREE OF CURVE
C9	63.35	N57°24'15"E	63.29	430.00	08°26'27"	31.73	13°19'29"
C10	209.66	N60°55'57"E	209.66	8675.26	01°23'05"	104.84	00°39'38"
C11	158.87	N43°52'10"E	158.75	1175.92	07°44'28"	79.56	04°52'21"
C12	122.34	N37°01'07"E	122.28	1175.92	05°57'39"	61.22	04°52'21"
C13	298.24	N26°46'20"E	297.44	1175.92	14°31'54"	149.93	04°52'21"
C14	383.24	N39°00'23"E	378.28	686.20	32°00'00"	196.76	08°20'59"
C15	208.21	N60°55'57"E	208.21	8615.26	01°23'05"	104.11	00°39'54"
C16	123.75	N44°33'47"E	123.69	1115.92	06°21'14"	61.94	05°08'04"
C17	416.76	N39°00'23"E	411.36	746.20	32°00'00"	213.97	07°40'42"

LOCAL DATUM COORDINATE TABLE

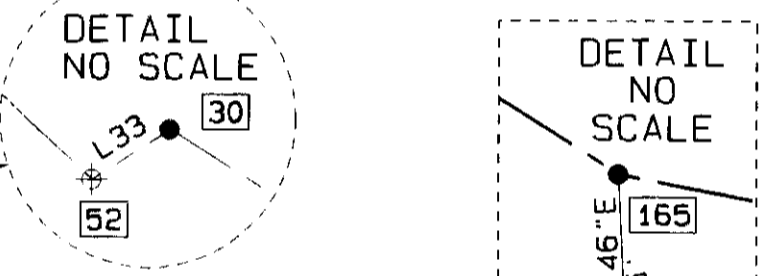
POINT #	DESCRIPTION	NORTHING	EASTING
1	OSHD R/W PIN	52257.20	31953.99
3	WELLS PIN	51408.24	31412.70
4	WELLS PIN	51348.70	31405.29
5	TRAVERSE PIN#1	50932.99	31320.30
6	TRAVERSE PIN#2	50251.85	30808.38
18	151+03.80 37.73' RT	50826.62	31349.02
26	167+15.61 POS CL	52313.06	31834.23
27	149+48.72 37.18' RT	50685.24	31274.05
30	147+56.85 41.34' LT	50577.75	31057.51
31	148+71.12 POC 169.12' RT	50541.87	31337.18
32	148+19.33 45.26' RT	50570.69	31204.10
33	147+81.14 30.00' RT	50549.67	31167.40
35	136+59.14 43.61' LT	49974.86	30196.54
52	147+53.40 PT 30.00' LT	50567.75	31103.82
53	149+00.36 POC 30.00' RT	50647.31	31241.03
104	135+14.36 PT CL	49853.19	30106.77
105	137+43.88 PC CL	49990.73	30290.51
107	138+11.65 PT CL	50027.20	30347.56
109	139+17.38 PC CL	50077.45	30404.58
111	141+26.32 PCS CL	50178.96	30623.20
112	146+26.32 PSC CL	50457.42	31037.21
114	151+90.99 PCS CL	50922.88	31346.73
115	156+90.99 PT CL	51412.37	31443.40
116	158+73.85 PS CL	51593.87	31465.70
117	162+73.85 PSC CL	51983.28	31550.86
119	166+73.85 PCS CL	52290.08	31799.37
136	137+43.88 PC 33.38' LT	50017.45	30270.51
137	138+11.65 PT 30.00' LT	50053.60	30333.30
138	139+17.38 PC 30.00' LT	50103.85	30426.33
139	141+26.32 PCS 30.00' LT	50205.00	30608.31
140	166+96.88 POS 30.00' LT	52328.09	31802.01
141	167+36.13 POS 30.00' RT	52297.78	31866.98
154	146+26.32 PSC 30.00' LT	50479.63	31017.03
155	151+90.99 PCS 30.00' LT	50932.90	31318.45
200	156+90.99 PT 30.00' LT	51416.03	31413.62
201	158+73.85 PS 30.00' LT	51597.53	31435.93
226	162+73.85 PSC 30.00' LT	51995.00	31523.25
227	166+73.85 PCS 30.00' LT	52314.66	31782.16
267	135+14.36 PT 30.00' RT	49829.17	30124.75
268	137+43.88 PC 30.00' RT	49966.71	30308.49
269	138+11.65 PT 30.00' RT	50000.81	30361.81
270	139+17.38 PC 30.00' RT	50051.06	30454.84
271	141+26.32 PCS 30.00' RT	50152.92	30638.09
296	146+26.32 PSC 30.00' RT	50435.22	31057.38
297	151+90.99 PCS 30.00' RT	50912.86	31375.01
502	SECTION CORNER 6/5/7/8	52258.79	31962.34
630	156+90.99 PT 30.00' RT	51408.71	31473.17
631	158+73.85 PS 30.00' RT	51590.21	31495.48
656	162+73.85 PSC 30.00' RT	51971.55	31578.48
657	166+73.85 PCS 30.00' RT	52265.51	31816.57
836	148+71.12 POC CL	50640.08	31199.49
837	148+98.55 107.43' RT	50602.33	31304.09
838	148+43.68 106.81' RT	50553.84	31268.74

RIGHT-OF-WAY DEEDS

REEL 350, PAGE 873. BLUE MOUNTAIN LUMBER PRODUCTS, LLC, TO UMATILLA COUNTY, RECORDED 5/13/99.
 REEL 351, PAGE 991. BROGGIOTTI TO UMATILLA COUNTY, RECORDED 5/25/99.
 ALSO SEE UMATILLA COUNTY BOARD OF COMMISSIONERS ORDER #R099-09 LEGALIZING THE ROAD, (RECORDED IN REEL 356, PAGE 419, 8/20/99).

LEGEND

- RIGHT-OF-WAY MONUMENT: 5/8" IRON REBAR WITH YELLOW PLASTIC CAP MARKED "U.C.P.W.D. PLASTIC CAP MARKED "UMA. CO. P.D. S 2627"; ROBERTS, 1999. SET IN EARLIER SURVEY, CS # 99-92-C.
- TRAVERSE POINT ONLY: 5/8" IRON REBAR WITH YELLOW PLASTIC CAP MARKED "UMA. CO. P.D. S 2627"; ROBERTS, 1999. CS # 99-92-C (SET IN 1997).
- CALCULATED POINT: NOT SET
- FOUND BRASS CAP AS NOTED
- RR SPIKE WITH PUNCH MARK STAMPED "LS2627" SET IN EARLIER SURVEY (CS#99-92-C).
- P-K NAIL SET IN EARLIER SURVEY (CS#99-92-C).
- LUMINAIRE POLE
- FIRE HYDRANT
- WATER VALVE
- TELEPHONE PEDESTAL
- FOUND MONUMENT AS NOTED
- POWER POLE
- CULVERT PIPE
- GATE
- CENTERLINE
- RIGHT-OF-WAY LINE
- EDGE OF ROAD
- FENCE
- GUARDRAIL
- PROPERTY SHOWN AS POTENTIAL ROAD RIGHT-OF-WAY ON CS#99-92-C; NEVER ACQUIRED.

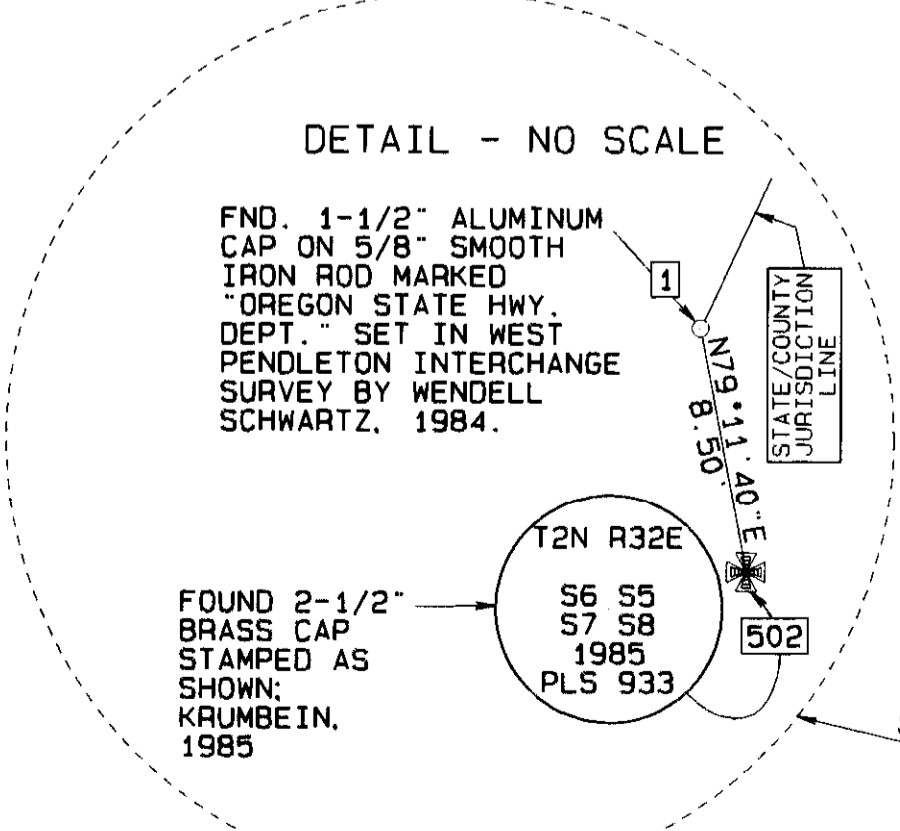


FND. 5/8" IRON REBAR WITH YELLOW PLASTIC CAPS MARKED "OR PLS 1106 WA PLS 17372" SET BY WELLS CS#98-216-B. FOR BROGGIOTTI. MONUMENTS ARE ON CALCULATED RIGHT-OF-WAY LINE.

NOTE: THESE TWO MONUMENTS ARE OUTSIDE OF EXISTING RIGHT-OF-WAY.

FOR NARRATIVE OF SURVEY SEE SHEET 1 OF 2.

NOTE #1: RIGHT-OF-WAY WIDTHS VARY; FOR CENTERLINE OFFSET DISTANCES SEE LOCAL DATUM COORDINATE TABLE.



CL CURVE DATA
 41.76' SPIRAL CURVE SEGMENT
 RIGHT a = 2.0
 CH. LENGTH = 41.75'
 CH. BRG = N56°37'06"E

UMATILLA COUNTY ROAD DEPT.
 3920 WESTGATE
 PENDLETON, OREGON 97801

FINAL RIGHT-OF-WAY MAP
 FOR COUNTY ROAD #1300

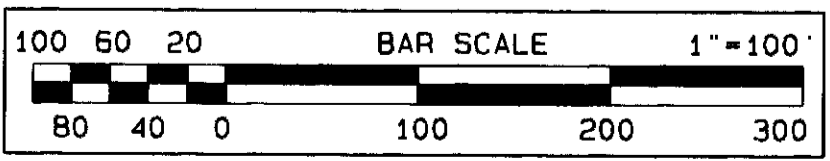
LOCATED IN SECTION 7, TOWNSHIP 2 NORTH,
 RANGE 32 EAST OF THE WILLAMETTE MERIDIAN

DATE OF SURVEY: DECEMBER, 1999

SHEET 2 OF 2

DRAWN BY: NELL ROBERTS CHECKED BY: G. R.

REGISTERED PROFESSIONAL LAND SURVEYOR
 Gary R. Roberts
 OREGON
 JULY 20, 1993
 GARY R. ROBERTS
 2627
 RENEWS 12/31/00



RECEIVED BY
 Umatilla County Planning
 Date: 12-99
 99-315-C