

BEFORE THE BOARD OF COUNTY COMMISSIONERS FOR UMATILLA COUNTY
STATE OF OREGON

In the Matter of Vacating a Section)
of County Road No. 620.)

ORDER

WHEREAS the Umatilla County Board of Commissioners received a petition signed by a majority of the freeholders resident and interested parties within the affected area of County Road No. 620, and

WHEREAS the Umatilla County Board of Commissioners declared it's intent on February 8, 1974, to vacate a section of County Road #620 as per the following description:

Located in the SW 1/4, SW 1/4, Section 15 and NW 1/4, NW 1/4, Section 22, Township 5 North, Range 28 East, W.M.

Commencing at a point which is S 89° 28' 00" E, 1168.01 feet from the corner common to Sections 15, 16, 21 and 22, Township 5 North, Range 28 East, W.M.; thence N 10° 26' 00" W, 33.67 feet; thence S 89° 28' 00" E, 45.96 feet; thence S 56° 20' 00" E, 120.74 feet; thence N 89° 28' 00" W, 134.30 feet; thence N 10° 26' 00" W, 33.67 feet to the point of beginning for this description.

WHEREAS the Roadmaster made his report to the Umatilla County Board of Commissioners that the section of County Road #620 in question was useless to the county road system and recommended that that portion of County Road #620 be vacated, and

WHEREAS on February 20, 1974, the Umatilla County Board of Commissioners signed the Notice of Hearing, and

WHEREAS the Hearing in the Matter of Vacating a Section of County Road #620 was held in the Umatilla County Courthouse on March 27, 1974, as required by Oregon State Law, and

WHEREAS there were no remonstrances against the Vacation of that section of County Road #620.


THEREFORE the Umatilla County Board of Commissioners finding it in the best interest of citizens of Umatilla County Order that Section of County Road #620 be Vacated.

DATED the 3rd day of April, 1974.

UMATILLA COUNTY
BOARD OF COMMISSIONERS

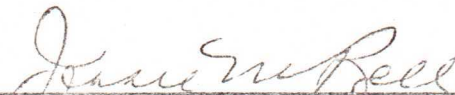


C. E. LASSEN, CHAIRMAN

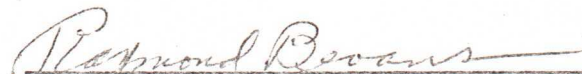


R. E. REES, COMMISSIONER

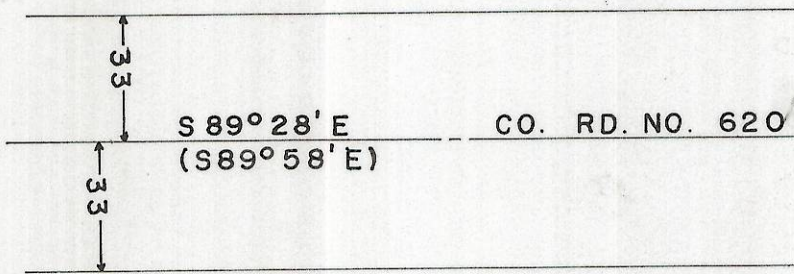
ATTEST:



JESSIE M. BELL, COUNTY CLERK



RAYMOND BEVANS, COMMISSIONER



U.S. HWY. 30
ALT.

