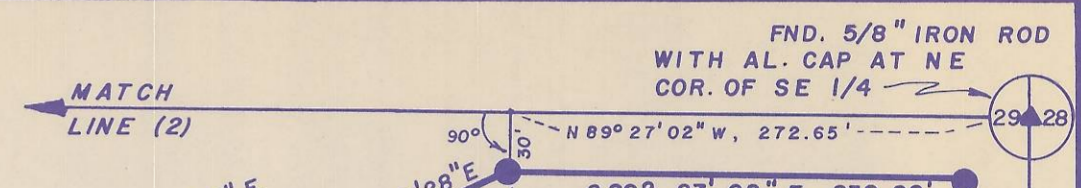


DEMOSSE HOMESTEAD SUBDIVISION SHEET 1 of 3

UMATILLA COUNTY, OREGON



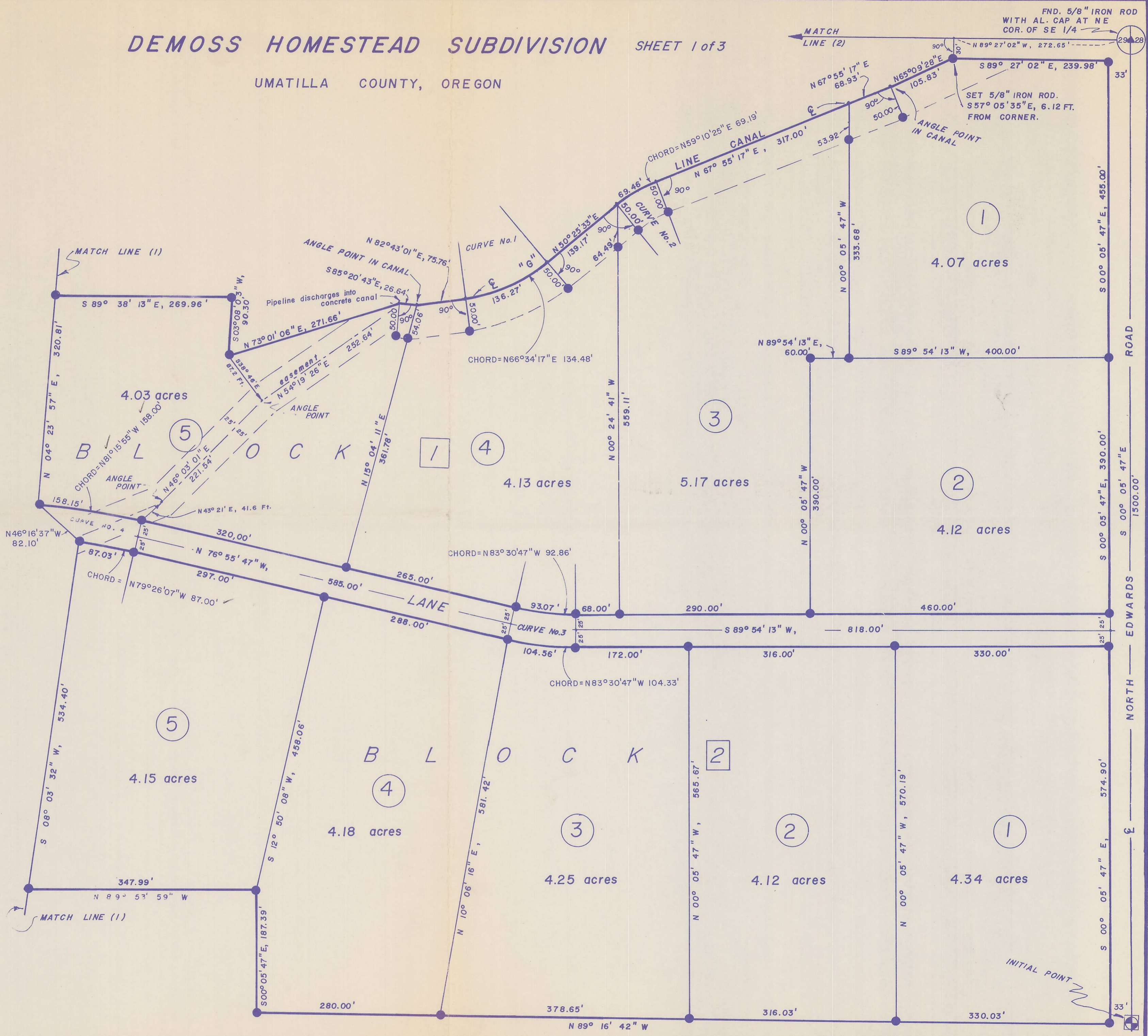
SCALE 1" = 100'
 DATE SEPT. 10, 1979

BASIS OF BEARING

THE LINE CONNECTING THE E. 1/4 CORNER TO THE W. 1/4 CORNER BEARS N 89° 27' 02" W, AS DETERMINED IN THE WEST WIND SUBDIVISION PLAT.

LEGEND

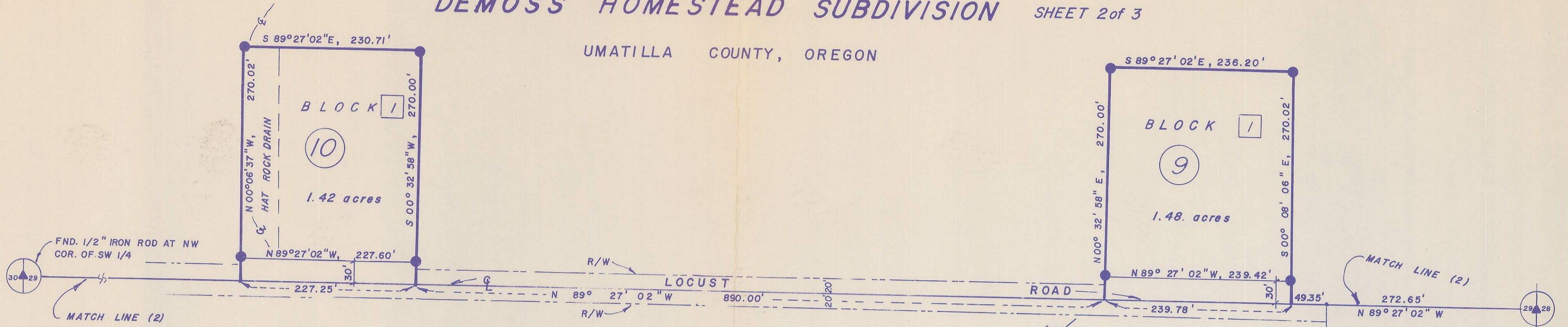
- ▲ MONUMENT FOUND AS NOTED
- SET 5/8" X 30" IRON ROD
- HERMISTON IRRIGATION EASEMENT BOUNDARY
- SET 2" BRASS CAP IN 6" DIA. X 24" CONCRETE MONUMENT



Q-2015-B

DEMOSS HOMESTEAD SUBDIVISION SHEET 2 of 3

UMATILLA COUNTY, OREGON

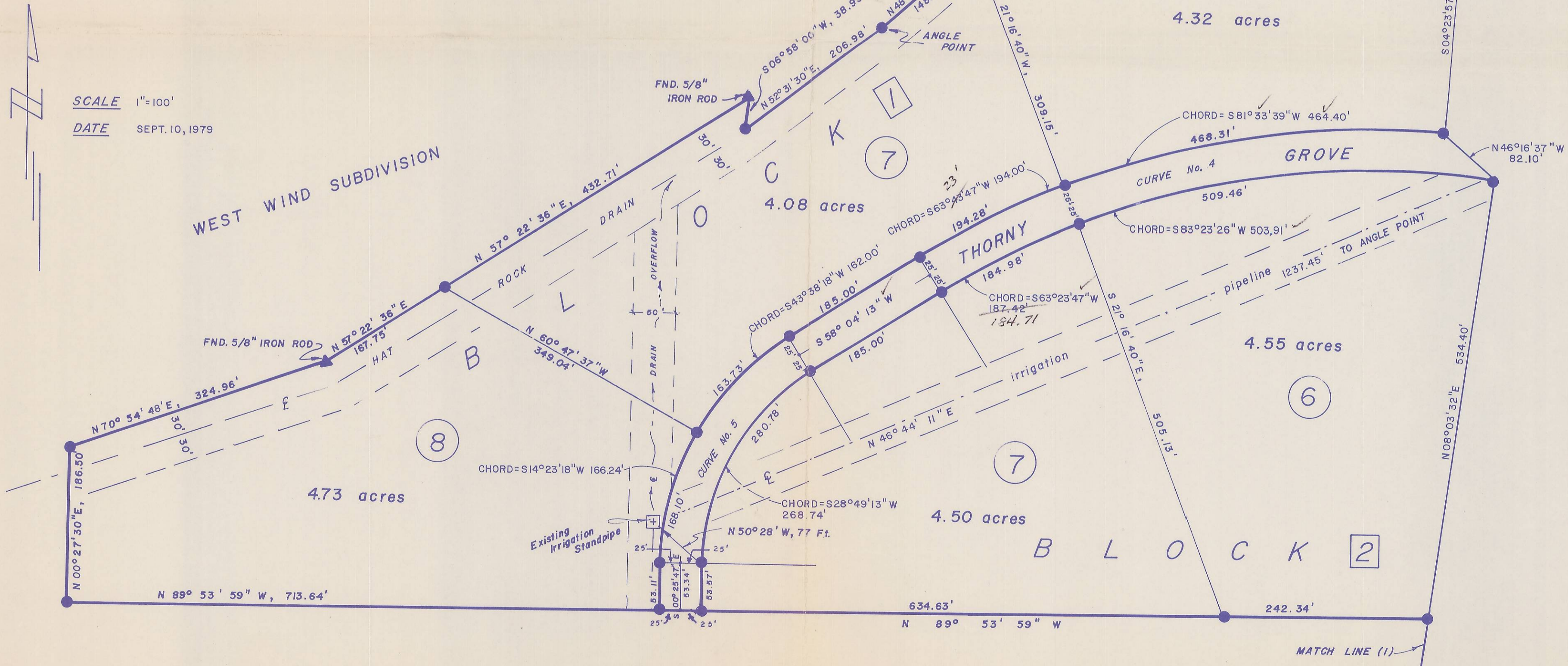


CURVE DATA

CURVE NO.	RADIUS, FT.	ANGLE, °	LENGTH, FT.	RADIUS MEASURED TO
1	241.80	32° 17' 28"	136.27	6" LINE CANAL
2	227.46	17° 29' 44"	69.46	" " " "
3	430.00	13° 10' 00"	98.82	E THORNY GROVE LANE R/W
4	1020.00	45° 00' 00"	801.11	" " " " "
5	300.00	58° 30' 00"	306.31	" " " " "

SCALE 1"=100'

DATE SEPT. 10, 1979



2-201

DEMOSSE HOMESTEAD SUBDIVISION SHEET 3 OF 3

UMATILLA COUNTY, OREGON

STATE OF OREGON, COUNTY OF UMATILLA. I, J. Dean Fouquette, Sr., County Clerk, certify that this instrument was received and recorded ON Oct. 31, 1979 at 10:30 o'clock A.M. in the record of Town Plat of said County in Book 12 Page 16. J. DEAN FOUQUETTE, SR. County Clerk. By Betty Jo Aronson Deputy Fees \$ 15.00 No. 57782

SURVEYORS CERTIFICATE

STATE OF OREGON) COUNTY OF UMATILLA) S.S.

I, THOMAS F. LAGIER, BEING FIRST DULY SWORN, DO DEPOSE AND SAY THAT I AM A DULY REGISTERED LAND SURVEYOR OF THE STATE OF OREGON, AND THAT I HAVE CORRECTLY SURVEYED AND MARKED WITH LEGAL MONUMENTS THE LAND REPRESENTED ON THE ABOVE PLAT AS FOLLOWS:

COMMENCING AT A 5/8" IRON ROD FOUND AT THE N.E. CORNER OF THE S.E. 1/4 OF SECTION 29 T5N, R29E, W.M.; THENCE S00°05'47"E ALONG THE EAST BOUNDARY OF SAID SECTION 29, A DISTANCE OF 1500.00 FEET TO THE INITIAL POINT:

THENCE N89°16'42"W A DISTANCE OF 1337.71 FEET; THENCE N00°05'47"W A DISTANCE OF 187.39 FEET; THENCE N89°53'59"W A DISTANCE OF 1928.60 FEET; THENCE N00°27'30"E A DISTANCE OF 186.50 FEET; THENCE N70°54'48"E A DISTANCE OF 324.96 FEET; THENCE N57°22'36"E A DISTANCE OF 600.46 FEET; THENCE S06°58'00"W A DISTANCE OF 52.93 FEET; THENCE N52°31'30"E A DISTANCE OF 206.98 FEET; THENCE N42°09'52"E A DISTANCE OF 455.81 FEET; THENCE S17°43'48"E A DISTANCE OF 59.31 FEET; THENCE S00°32'39"W A DISTANCE OF 46.21 FEET; THENCE S89°38'13"E A DISTANCE OF 619.66 FEET; THENCE S03°02'03"W A DISTANCE OF 90.30 FEET; THENCE N73°01'06"E A DISTANCE OF 271.66 FEET; THENCE S85°20'43"E A DISTANCE OF 26.64 FEET; THENCE N82°43'01"E A DISTANCE OF 75.76 FEET; THENCE ALONG A 241.20 FOOT RADIUS CURVE CONCAVE TO THE NORTHWEST TO A POINT THE LONG CHORD OF WHICH BEARS N66°34'17"E A DISTANCE OF 134.48 FEET; THENCE N50°25'33"E A DISTANCE OF 139.17 FEET; THENCE ALONG A 227.46 FOOT RADIUS CURVE CONCAVE TO THE SOUTHEAST TO A POINT THE LONG CHORD OF WHICH BEARS N59°10'25"E A DISTANCE OF 69.19 FEET; THENCE N67°55'17"E A DISTANCE OF 385.93 FEET; THENCE N65°09'28"E A DISTANCE OF 105.83 FEET; THENCE N00°32'57"E A DISTANCE OF 30.00 FEET; THENCE N89°27'02"W A DISTANCE OF 1406.38 FEET; THENCE N00°06'37"W A DISTANCE OF 300.02 FEET; THENCE S89°27'02"E A DISTANCE OF 230.71 FEET; THENCE S00°32'58"W A DISTANCE OF 300.00 FEET; THENCE S89°27'02"E A DISTANCE OF 890.00 FEET; THENCE N00°32'58"E A DISTANCE OF 300.00 FEET; THENCE S89°27'02"E A DISTANCE OF 236.20 FEET; THENCE S00°08'06"E A DISTANCE OF 300.02 FEET; THENCE S89°27'02"E A DISTANCE OF 322.00 FEET; THENCE S00°05'47"E A DISTANCE OF 1500.00 FEET TO THE INITIAL POINT.



Thomas F. Lagier, Thomas F. Lagier P.L.S.

SUBSCRIBED AND SWORN BEFORE ME THIS 10 DAY OF September, 1979. Helma E. Owen, Notary Public for Oregon, My Commission Expires 4/19/83



DEDICATION

STATE OF OREGON) COUNTY OF UMATILLA) S.S.

BE IT HEREBY KNOWN BY THESE PRESENTS THAT THE UNDERSIGNED DO HEREBY ESTABLISH AND ACKNOWLEDGE THE ACCOMPANYING PLAT AS THE OFFICIAL MAP AND PLAT OF DEMOSSE HOMESTEAD SUBDIVISION TO THE COUNTY OF UMATILLA, OREGON, AND THAT THE UNDERSIGNED OWNER OF THE LAND ON THE ACCOMPANYING PLAT DOES HEREBY DEDICATE TO THE USE OF THE PUBLIC FOREVER THE STREETS AND AVENUES DESIGNATED ON SAID PLAT AND THE UTILITY EASEMENTS AS SHOWN.

Donald C. Demoss, Wanda J. Demoss

BE IT REMEMBERED THAT ON THIS 10 DAY OF September, 1979, PERSONALLY APPEARED BEFORE ME Donald C. Demoss and Wanda J. Demoss WHO ARE KNOWN TO ME TO BE THE IDENTICAL PERSONS DESCRIBED IN AND WHO EXECUTED THE ABOVE INSTRUMENT AND WHO ACKNOWLEDGED TO ME THAT THEY EXECUTED THE SAME FREELY AND VOLUNTARILY.

Helma E. Owen, Notary Public for Oregon, County of Umatilla, My Commission Expires 4/19/83



APPROVALS

COUNTY SURVEYOR

I, DAVID H. KRUMBEIN, UMATILLA COUNTY SURVEYOR, DO HEREBY CERTIFY THAT I HAVE CAREFULLY EXAMINED THE ACCOMPANYING PLAT OF THE DEMOSSE HOMESTEAD SUBDIVISION, UMATILLA COUNTY, OREGON, THAT IT COMPLIES WITH THE LAWS OF THE STATE OF OREGON WITH REFERENCE TO FILING AND RECORDING OF SUCH PLATS AND I THEREFORE APPROVE SAID PLAT FOR THE APPROVAL OF THE COUNTY COURT OF UMATILLA COUNTY, OREGON. DATED THIS DAY OF 1979.

UMATILLA COUNTY SURVEYOR

PLANNING COMMISSION

THE ACCOMPANYING PLAT IS HEREBY APPROVED BY A VOTE OF THE UNDERSIGNED AND ADOPTED THIS DAY OF 1979, AND APPROVAL DULY FILED.

CHAIRMAN

HERMISTON IRRIGATION DISTRICT

THE ACCOMPANYING PLAT IS HEREBY APPROVED BY RESOLUTION AND ADOPTED ON THIS DAY OF 1979 AND APPROVAL DULY FILED.

CHAIRMAN

BOARD OF COMMISSIONERS

THIS IS TO CERTIFY THAT THE ACCOMPANYING PLAT IS APPROVED FOR FILING AND RECORDING IN THE "RECORD OF TOWN PLATS" OF UMATILLA COUNTY, OREGON, BY THE UNDERSIGNED BY ITS ORDER DATED THIS DAY OF 1979 RECORDED IN COUNTY COURT JOURNAL PAGE

COMMISSIONER

COMMISSIONER

COMMISSIONER

UMATILLA COUNTY ASSESSOR AND TAX COLLECTOR

I, JAMES T. WHITE SR. AND I, D.L. BRATT, RESPECTIVELY ASSESSOR AND TAX COLLECTOR OF UMATILLA COUNTY, OREGON, EACH HEREBY CERTIFY THAT WE HAVE EXAMINED THE TAX RECORDS RELATIVE TO THE LAND COVERED BY THE ACCOMPANYING PLAT, AND THAT ALL MONIES DUE FOR STATE AND COUNTY TAXES AND ASSESSMENTS THAT COULD NOW CONSTITUTE A LIEN ON SAID LAND HAVE NOW BEEN PAID AND WE HEREBY APPROVE SAID PLAT, DATED THIS DAY OF 1979.

ASSESSOR

TAX COLLECTOR

UMATILLA COUNTY CLERK

ATTEST: I, J. DEAN FOUQUETTE SR., COUNTY CLERK OF UMATILLA COUNTY, OREGON, DO HEREBY CERTIFY THAT THE ABOVE NAMED WERE ON THE DATE OF SAID ORDER ABOVE SPECIFIED AND ARE NOW THE DULY QUALIFIED, ELECTED, SWORN AND ACTING CHAIRMAN AND COMMISSIONERS OF SAID COUNTY; THAT THE SIGNATURES ARE THE GENUINE SIGNATURES THEREOF AND THE SEAL HERETO AFFIXED IS THE SEAL OF MY OFFICE.

J. Dean Fouquette Sr., County Clerk

DeMoss Homestead Sub
83-57-

SURVEYORS AFFIDAVIT
DEMOSS HOMESTEAD SUBDIVISION CORRECTION
UMATILLA COUNTY, OREGON

During the course of completing the DeMoss Homestead Subdivision, it was determined that discrepancies existed in some areas between the deed boundary and the possession boundary as evidenced by the existing fences. The owner instructed me not to go beyond the possession boundary in those cases where the neighbor in question did not recognize the deed boundary line. The South boundary of Lot 8, Block 1, and Lots 5, 6, 7, Block 2 were established by the extension of an existing fence line to the West. Subsequent to filing the final plat, I discovered that the projection of the fence line alignment followed a more westerly course than the deed boundary and that the two lines intersected at a point on the South boundary of Lot 7, Block 2. Following is a description of the courses required to correct the southern boundaries of Lot 7, Block 2, and Lot 8, Block 1, to the deed line westerly of the point of intersection with the projected fence line used in the final plat:

Commencing at the Southeast corner of Lot 7, Block 2, DeMoss Homestead Subdivision, recorded in Plat Book 12, page 16 Umatilla County Records:

- Thence N89°53'59"W, a distance of 187.13 feet to a 5/8" Iron Rod set;
- Thence N89°30'24"W, a distance of 447.53 feet to the intersection with the easterly boundary of Thorny Grove Lane right of way;
- Thence N89°30'24"W, a distance of 50.01 feet to the intersection with the westerly boundary of Thorny Grove right of way;
- Thence N89°30'24"W, a distance of 73.81 feet to a 5/8" Iron Rod set at the SW.cor.of the NW 1/4 of the SE 1/4 of Section 29, T5N, R29E, W.M.
- Thence N89°30'56"W, a distance of 639.76 feet;
- Thence N00°27'30"E, a distance of 178.30 feet to the point of intersection with the boundary of West Wind Subdivision, recorded Plat Book 12, Page 8, Umatilla County Records.

In addition to correcting the boundary line as noted herein, the following additional changes are required.

1. SURVEYORS CERTIFICATE

The second and third courses from the INITIAL POINT should be deleted and a correction inserted as follows:

DELETE

"Thence N89°53'59"W a distance of 1988.60 feet; thence N00°27'30"E a distance of 186.50 feet";

INSERT (In place of the deletion)

Thence N89°53'59"W a distance of 777.46 feet; thence N89°30'24"W, a distance of 571.35 feet; thence N89°30'56"W, a distance of 639.76 feet; thence N00°27'30"E, a distance of 178.30 feet;

83-57.
S.N. R29, Sec. 29

Surveyors Affidavit
Page 2

2. OFFSET CORNER

The 5/8" iron rod shown on the plat at the North end of the West boundary of Lot 8, Block 1, is offset S89°04'E, 1.90 feet from the actual lot corner.

3. THORNY GROVE LANE

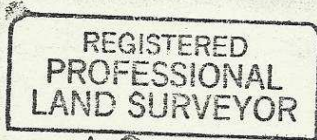
The intersection of Thorny Grove Lane right of way with the southerly boundary line resulted in shortened right of way tangents between the end of Curve No. 5 and the corrected subdivision boundary as follows:

	<u>Original plat distance</u>	<u>Corrected plat distance</u>
West Tangent	53.11 feet	49.70 feet
East Tangent	53.57 "	50.50 "
Centerline of Right of Way	53.34 "	50.10 "

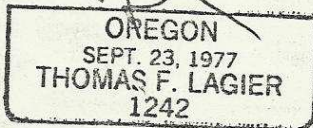
4. AREA LOT 8, BLOCK 2

The area of Lot 8, Block 2, is actually 4.66 acres rather than the 4.73 acres shown on the original plat.

Attached hereto is a sketch showing the section monumentation found and used in arriving at the corrected plat boundary described herein.

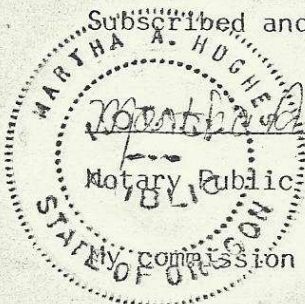


Thomas F. Lagier
Thomas F. Lagier



2/18/82
Date

Subscribed and sworn before me this 19th day of February, 1982.
Martha A. Hughes
Notary Public for the State of Oregon
My commission expires May 18, 1984.



INDEXED ✓
INDEXED ✓

12-16

R 89 PAGE 544

R 89 PAGE 243

STATE OF OREGON, }
COUNTY OF UMATILLA, } ss

I, J. Dean Fouquette, Sr., County Clerk,
certify that this instrument was received and
recorded

ON FEB. 19. 1982

at 4:20 o'clock P.M. in the record
of DEEDS of said County in

Book Page
R-89 542

J. DEAN FOUQUETTE, SR.
County Clerk

By Betty J. Browning Deputy
Fees \$ 9.00 No. 81632

THIS INSTRUMENT
RECORDED
JAN 21 1982
CLERK
COUNTY OF UMATILLA
OREGON

CLERK OF UMATILLA COUNTY
JAN 21 1982

5/12/85

Telek Engineering
540 SW 11th
Hermiston, Or. 97838