

12/18/74

BEFORE THE BOARD OF COUNTY COMMISSIONERS FOR UMATILLA COUNTY

STATE OF OREGON

In the Matter of VACATING a parcel of land donated for county road purposes.)

ORDER

WHEREAS the Umatilla County Board of Commissioners received a petition to Vacate a parcel of land donated in 1917 for county road purposes, said parcel has the following description:

Commencing at a point on the North side of Section 4, Township 4 North, Range 29 East, W.M., 2,001.0 feet West of the Northeast corner of said Section 4; thence S 24° 12' E. 179.0 feet; thence S 37° 13' E. 294.0 feet; thence East 256.0 feet; thence on a curve to the left having a radius of 100.0 feet, 140.6 feet; thence N 9° 22' E. parallel with and 15.0 feet at right angles westerly from U. S. Government Irrigation Canal 59.0 feet; thence N 22° 55' E. 276.0 feet to aforesaid North line of Section 4 at a point 1,278.0 feet West of the aforesaid Northeast corner of said Section 4.

A strip of land sixty (60) feet in width being thirty (30) feet on each side of described center line.

WHEREAS the Umatilla County Board of Commissioners signed their Resolution of Intent on August 7, 1974, and

WHEREAS the Umatilla County Roadmaster testified that the parcel of land as described in question was useless to the general public, and

WHEREAS a Hearing was held on December 4, 1974, as required by the Oregon State Law, and

WHEREAS there were no remonstrances against the Vacation of that parcel of land as described.

THEREFORE the Umatilla County Board of Commissioners, finding it in the best interest of the citizens of Umatilla County, ORDER that parcel of land as described, as requested, be VACATED.

DATED the 18 day of December, 1974.

UMATILLA COUNTY
BOARD OF COMMISSIONERS

C. E. Lassen

C. E. LASSEN, CHAIRMAN, COMMISSIONER

R. E. Rees

R. E. REES, COMMISSIONER

ATTEST:

Raymond Bevans

RAYMOND BEVANS, COMMISSIONER

JESSIE M. BELL, COUNTY CLERK

By Vern Masters Deputy

NW1/4 T4N. R.29E.W.M.

UMATILLA COUNTY

1"=1000'

CANCELLED
T.L. 4500
3702
10001
5509

Aerial Photo No. NZ-2P-18-20 Inc.
IP-124-126 Inc.

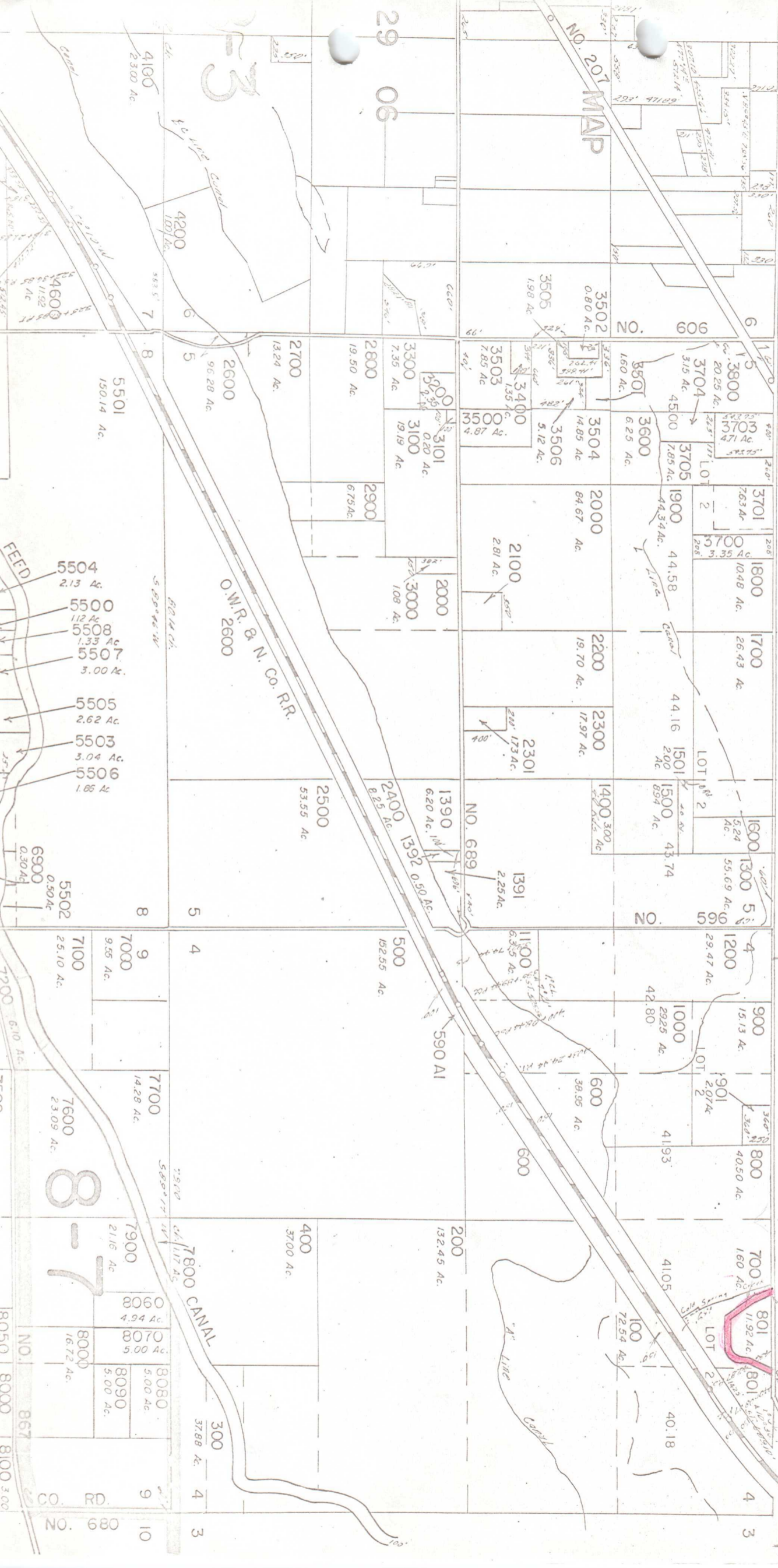
4N 29B

29 31

See Map 5N 29 32

NO. 601 CO. See RD. Map 5N 29 33

NO. 601 CO. See RD. Map 5N 29 33



29 06

NO. 207 MAP

NO. 909

NO. 601 CO.

NO. 601 CO.

NO. 680

4100
2300 Ac.
4200
100 Ac.
4600
1102 Ac.

5504
2.13 Ac.
5500
1.12 Ac.
5508
1.33 Ac.
5507
3.00 Ac.
5505
2.62 Ac.
5503
3.04 Ac.
5506
1.85 Ac.
6900
0.30 Ac.
5502
0.50 Ac.

7100
25.10 Ac.
7000
9.55 Ac.
7700
14.28 Ac.
7900
21.16 Ac.
8060
4.94 Ac.
8070
5.00 Ac.
8080
5.00 Ac.
8090
5.00 Ac.
8000
16.72 Ac.

NO. 680

4200
100 Ac.
2600
96.28 Ac.
2700
13.24 Ac.
2800
19.50 Ac.
3300
7.35 Ac.
3101
0.20 Ac.
3100
19.19 Ac.
2900
6.75 Ac.

3502
0.80 Ac.
3505
1.98 Ac.
3503
7.85 Ac.
3400
1.35 Ac.
3504
14.85 Ac.
3506
5.12 Ac.
3600
6.25 Ac.

2100
2.81 Ac.
2000
10.48 Ac.
1700
26.43 Ac.
2200
19.70 Ac.
2300
17.97 Ac.
2301
2.00 Ac.
1501
2.00 Ac.
1500
6.94 Ac.

1390
6.20 Ac.
1391
2.25 Ac.
1400
3.00 Ac.
1600
5.24 Ac.
1300
55.69 Ac.

500
152.55 Ac.
1100
6.35 Ac.
900
15.13 Ac.
1200
29.47 Ac.
1000
29.25 Ac.

7800 CANAL
3700
37.00 Ac.
200
132.45 Ac.
600
38.95 Ac.
800
40.50 Ac.
700
160 Ac.
801
11.92 Ac.
801
11.92 Ac.

NO. 680

2900
6.75 Ac.

3500
4.87 Ac.

2000
10.48 Ac.

1390
6.20 Ac.

500
152.55 Ac.

7800 CANAL

NO. 680

3300
7.35 Ac.

3101
0.20 Ac.

2000
10.48 Ac.

1390
6.20 Ac.

500
152.55 Ac.

7800 CANAL

NO. 680

3500
4.87 Ac.

3100
19.19 Ac.

2000
10.48 Ac.

1390
6.20 Ac.

500
152.55 Ac.

7800 CANAL

NO. 680

3504
14.85 Ac.

3506
5.12 Ac.

2100
2.81 Ac.

1391
2.25 Ac.

500
152.55 Ac.

7800 CANAL

NO. 680

3600
6.25 Ac.

3705
7.85 Ac.

2200
19.70 Ac.

1400
3.00 Ac.

500
152.55 Ac.

7800 CANAL

NO. 680

3701
7.63 Ac.

3704
3.15 Ac.

1700
26.43 Ac.

1501
2.00 Ac.

500
152.55 Ac.

7800 CANAL

NO. 680

3703
4.71 Ac.

3705
7.85 Ac.

2300
17.97 Ac.

1500
6.94 Ac.

500
152.55 Ac.

7800 CANAL

NO. 680

3701
7.63 Ac.

3704
3.15 Ac.

1700
26.43 Ac.

1501
2.00 Ac.

500
152.55 Ac.

7800 CANAL

NO. 680

Know All Men By These Presents

That W. J. Furnish and Jessie M. Furnish, his wife,

of the County of Multnomah, State of Oregon,
in consideration of One (\$1.00) Dollars.

and other valuable considerations
to them paid by

Umatilla County, State of Oregon, a municipal corporation
of the County of Umatilla, State of Oregon,

have bargained and sold, and by these presents do grant, bargain, and sell and convey unto said
Umatilla County, State of Oregon, a municipal corporation, its

successors heirs and assigns, all the following bounded and described real property, situated in the
County of Umatilla and State of Oregon:

A strip of land 60 feet wide being 30 feet on each side of a center
line described as follows:

Commencing at a point on the North side of Section Four (4), Township
Four (4), North Range Twenty-nine (29), E.W.M., 2001 feet West of the
Northeast corner of said Section Four (4); thence South 24° 12' East 179
feet; thence South 37° 13' East 294 feet; thence East 256 feet; thence on
a curve to the left having a radius of 100 feet a distance of 140.6 feet;
thence North 9° 22' East parallel with and 15 feet at right angles westerly
from a United States Government Irrigation Canal, 59 feet; thence North
22° 55' East 276 feet to the aforesaid North line of Section Four (4) at a
point 1278 feet west of the aforesaid Northeast corner of said Section
Four (4).

Together with all and singular the tenements, hereditaments, appurtenances thereunto belonging or
in anyway appertaining, and also all their estate, right, title and interest in and to the same, in-
cluding dower and claim of dower.

To have and to hold the above described and granted premises unto the said Umatilla County, State of Oregon, a municipal corporation, its successors heirs and assigns forever. And W. J. Furnish and Jessie M. Furnish, his wife, grantors above named do its successors covenant to and with Umatilla County the above named grantee heirs and assigns, that the above granted premises are free from all incumbrances

and that they will, and their heirs, executors and administrators shall warrant and forever defend the above granted premises, and every part and parcel thereof, against the lawful claims and demands of all persons whomsoever

IN WITNESS WHEREOF, the the grantors above named, hereto set their hands and seals this 7th day of September A. D. 1917

Signed, sealed and delivered in presence of

Ruth G. Furnish
Jay B. [unclear]

W. J. Furnish Seal
Jessie M. Furnish Seal
Seal
Seal

WARRANTY DEED

W. J. FURNISH

FT UX
- TO -

UMATILLA COUNTY

STATE OF OREGON,
County of Umatilla } ss.

I certify that the within instrument was received for record on the 21st day of December A. D. 1917, at 10:55 o'clock A. M., and recorded in Book 100 on page 30. Records of Deeds of said County.

Witness my hand and seal of office affixed.

J. B. [unclear]
Recorder of Conveyances.

By _____ Deputy

Fees 000 No. 82223

FROM THE OFFICE OF
HARTMAN ABSTRACT COMPANY,
PENDLETON, OREGON

STATE OF OREGON,
County of Multnomah } ss.

THIS CERTIFIES, That, on this 7th day of Sept A. D. 1917, before me, the undersigned, a Notary Public in and for the said County and State, personally appeared the within named W. J. Furnish and Jessie M. Furnish, his wife, who are known to me to be the identical persons described in and who executed the within instrument and acknowledged to me that they executed the same freely and voluntarily for the purposes and uses therein mentioned.

IN TESTIMONY WHEREOF, I have hereunto set my hand and official seal the day and year last above written.

Jay B. [unclear]
Notary Public for Oregon.

My commission expires Sept 11 1919