

248.

Report of Viewers. Field Notes and Plat of Survey of a County Road commencing at a stake on Sec line 60 Rods S. of  $\frac{1}{2}$  mile stake between Sec's 344 & 316. <sup>316</sup> ending at the side track of the O. R. & N. Co. R. R. at Barnhart Station.

## Report of Viewers

To the Hon. County Court of Umatilla County, Oregon

We the undersigned being appointed by your Hon. body to view a proposed survey for a County Road No 248, we met at the time and place appointed by you <sup>and</sup> after being duly qualified by W. W. Caviness, Surveyor, we viewed said road as set forth in the order. we find the same to be a good practicable route for a County Road <sup>and</sup> one that is much needed <sup>and</sup> little expense to open the same.

We would ask that the petition for said Road be granted.

This the 1<sup>st</sup> day of June 1885

J. F. Temple  
G. W. Mathews  
A. Simpson } Viewers

## Field Notes of Road No 248

Beg. at a stake on the Sec line 60 Rods South of the half mile stake bet. Sec's 344 <sup>set post marked R</sup> in T<sup>3</sup> S. R 316. Run thence South on line bet Sec's 344, 9410. 320 Rods set post Miles One. Run South on Sec line bet. 9410. 15416. 150 Rods, Angle South 20 deg West 12 Rods. Angle South 20 deg East 12 Rods. thence South on Sec line bet 15416. 146 Rods bet Post M. 2. Run South on line 15416. 21422. 124 Rods. Angle S. 40. W. 44 Rods. thence East 16 Rods. thence South on line bet. Sec 21422. 140 Rods set Post Miles 3. Run South on line bet Sec 21422. 27428. 320 Rods set post Miles 4. Run South on line bet Sec 27428 Sec 33434. 320 Rods set post Miles 5. Run South on line bet Sec 33434. 122 Rods to the T<sup>3</sup> line bet T<sup>3</sup> 273. R 316. Thence East on T<sup>3</sup> line 160 Rods to  $\frac{1}{2}$  mile cor bet. Sec 3434. thence South on half mile line through Sec 352. R 316. 38 Rods set Post Miles 6. Run South on  $\frac{1}{2}$  mile line of Sec 34 Sec 10. 320 Rods set post. M. 7. Run South on  $\frac{1}{2}$  mile line in Sec 10. 100 Rods to the top of the Barnhart hill. Angle S. 35. E. 80 Rods

Angle S. 18 E 1.40 Rods set post Miles 8

Angle S. 10. E 1.50 Rods

Angle W 10 S 58 Rods

Angle S. 30. W 20 Rods

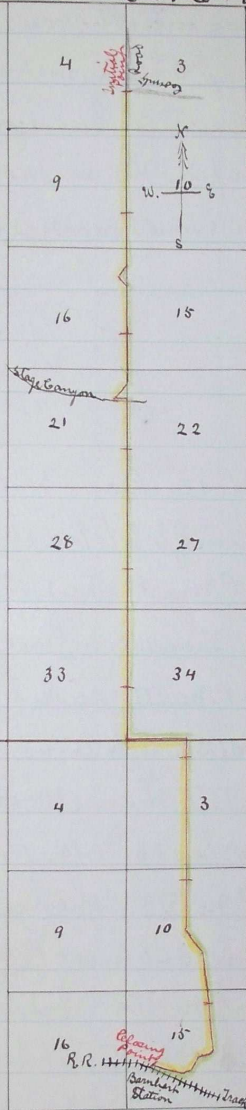
Angle W 5 S 10 Rods

Angle W 15 N 82 Rods at the side track at Barnhart Station set post Miles 9. Surveyed June 1<sup>st</sup> 1885

By W. W. Caviness

Plat of Road N<sup>o</sup> 248

Tp 3. N. R 31 E. W. m



Tp 2 N.

R 31 E. W. m.

Scale 1 inch to the mile

Journal G. page 40

.. G. .. 75

Recorded July 20<sup>th</sup> 1885

J.P. Bushu  
County Clerk.

I hereby certify this to be a true plat  
of Road N<sup>o</sup> 248.

Surveyed June 1<sup>st</sup> 1885

By W.W. Caviness