

UMATILLA COUNTY OREGON
COUNTY ENGINEER'S OFFICE
COUNTY ROAD NO. 870

LOCATED LINE

SCALE IN.=400FT. T IN. R32-33. E.W.M.

ORE. WASH.

0+00
HIGHWAY

TO PILOT ROCK

ORE. WASH.

HIGHWAY

TO PILOT

East.

23



20° C.P.
D=42°02'

45+90.4 P.C.

48+00.6 P.T.

10° C.L.
D=22°55'

570°53'E
53+33.1 P.C.

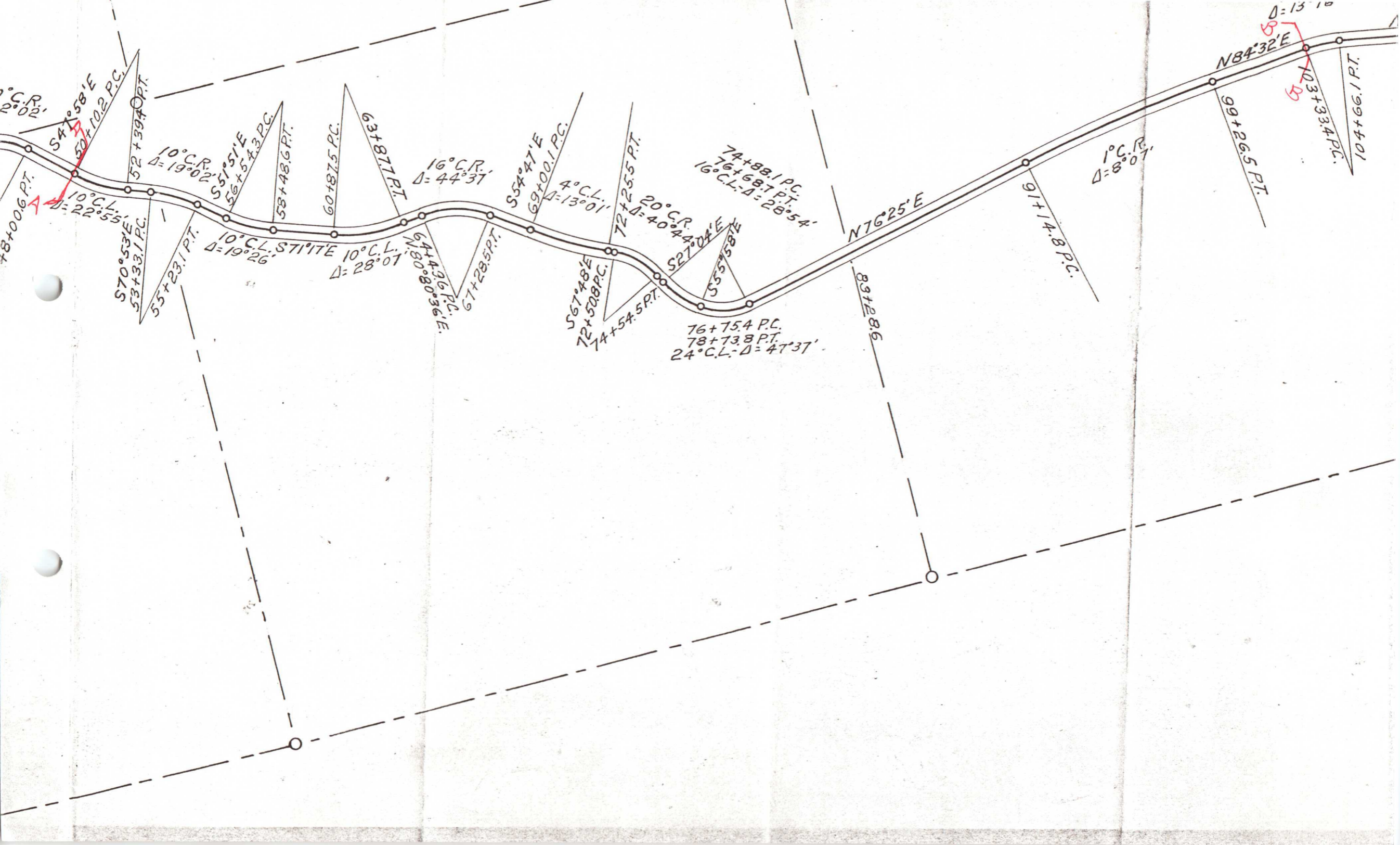
55+22.1 P.T.

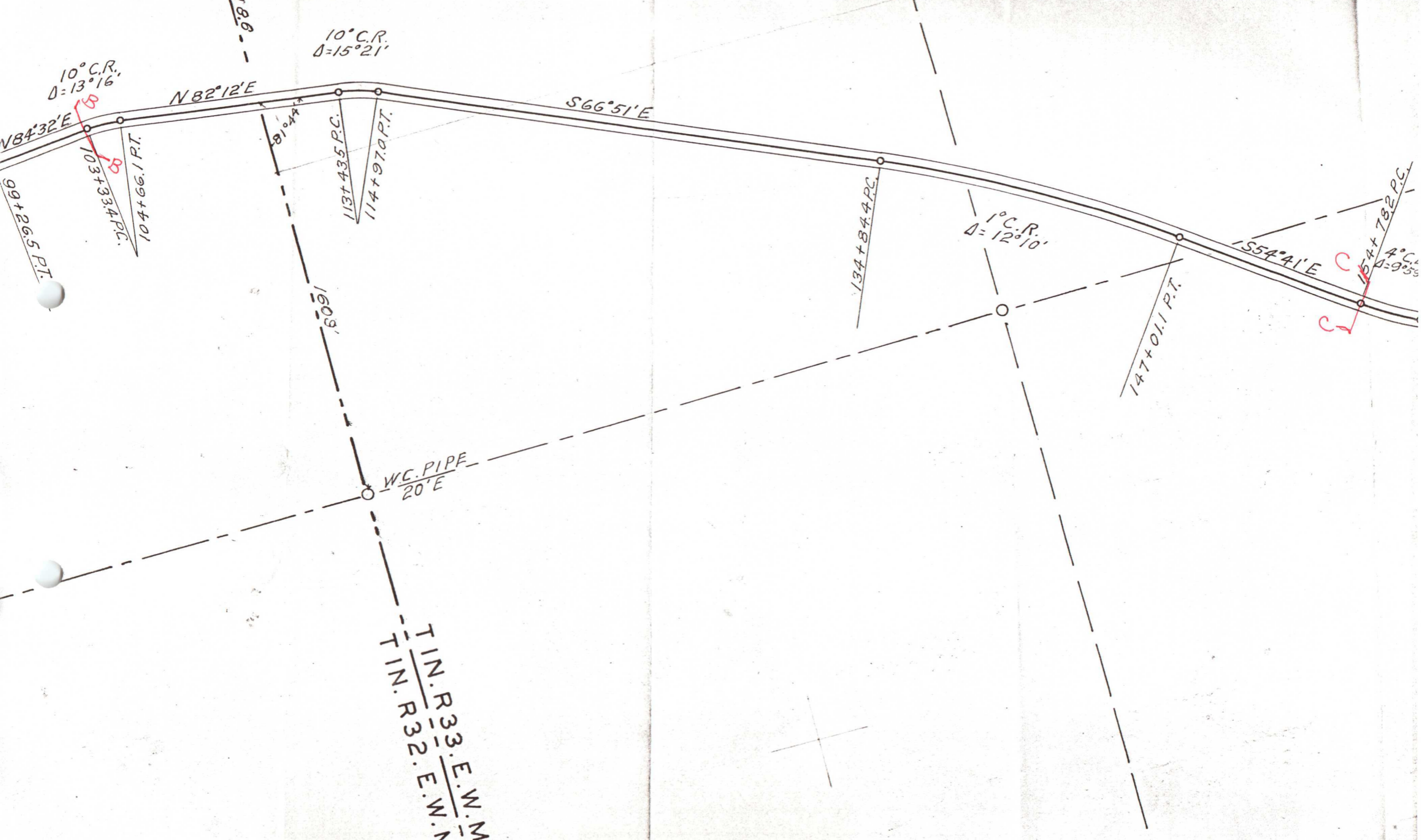
54°58'E

50+10.2 P.C.

52+39.4 P.T.







10° C.R.
Δ = 13° 16'

10° C.R.
Δ = 15° 21'

1° C.R.
Δ = 12° 10'

4° C.R.
Δ = 9° 55'

N 84° 32' E

N 82° 12' E

S 66° 51' E

S 54° 41' E

99+26.5 P.T.

103+33.4 P.C.

104+66.1 P.T.

113+43.5 P.C.

114+97.0 P.T.

134+84.4 P.C.

147+01.1 P.T.

154+78.2 P.C.

160.9

W.C. PIPE
20° E

1 IN. R 33. E. W. N
1 IN. R 32. E. W. N



155°41'E

154+78.2 P.C.
4° C.L.
Δ=9°59'

157+27.8 P.T.

S64°40'E

168+56.3

64°20'

1664'

175+51.0 P.C.

1° C.R.
Δ=6°13'

181+72.7 P.T.

S58°27'E

191+19.0 P.C.

4° C.R.
Δ=10°12'

194+24.0 P.T.

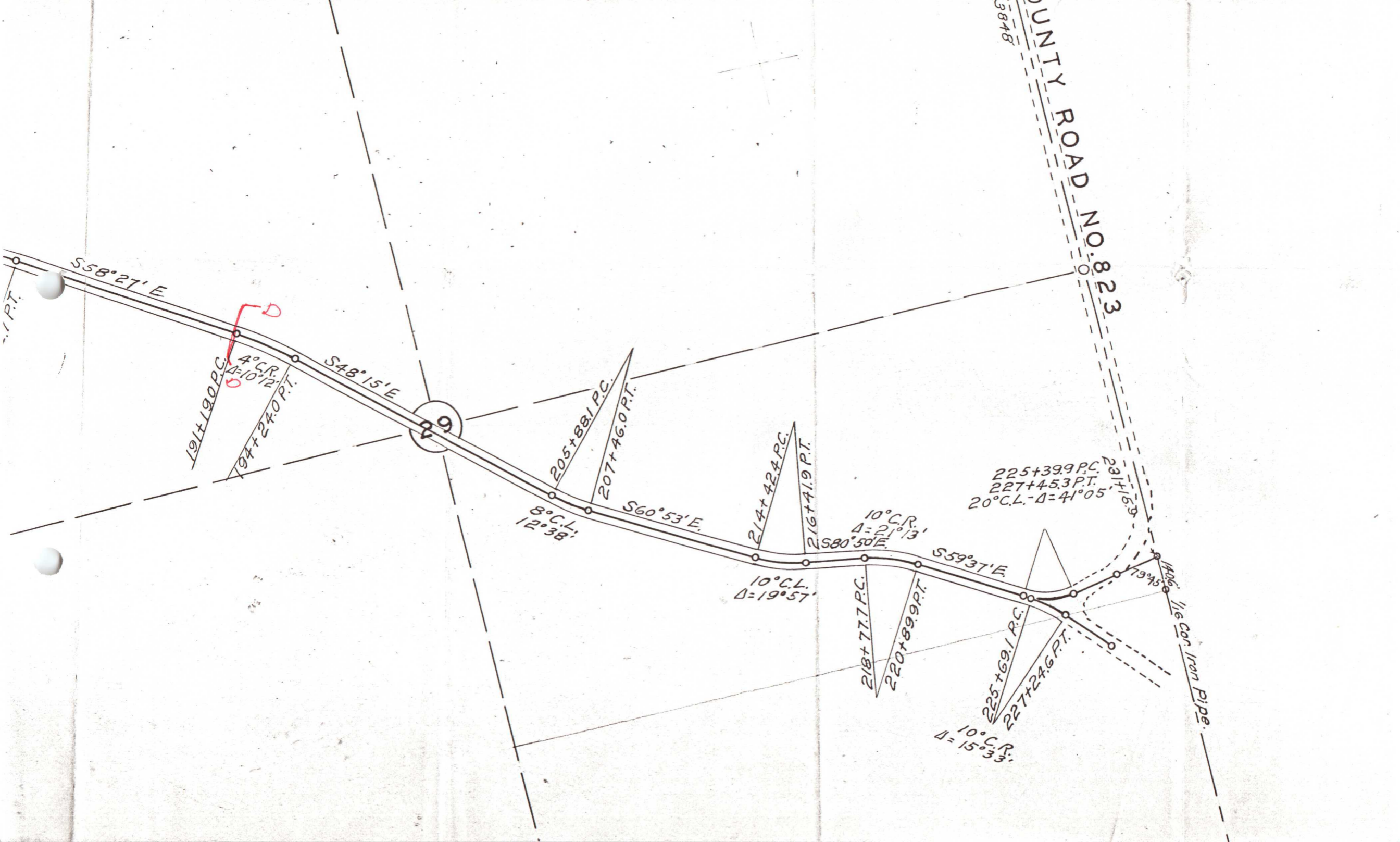
S48°15'E

9

205+88.1 P.C.

8° C.L.
Δ=12°38'

W.C. PIPE
20' E



COUNTY ROAD NO. 823

S58°27'E

191+190 P.C.
4° C.R.
Δ=10°12'

S48°15'E

209

205+881 P.C.
207+46.0 P.T.

8° C.L.
Δ=12°38'

S60°53'E

214+42.4 P.C.
216+41.9 P.T.

10° C.L.
Δ=19°57'

10° C.R.
Δ=21°13'

S59°37'E

218+77.7 P.C.
220+89.9 P.T.

10° C.P.
Δ=15°33'

225+69.1 P.C.
227+24.6 P.T.

225+39.9 P.C.
227+45.3 P.T.
20° C.L. - Δ=41°05'

231+15.3

1/2" Cor. Iron Pipe