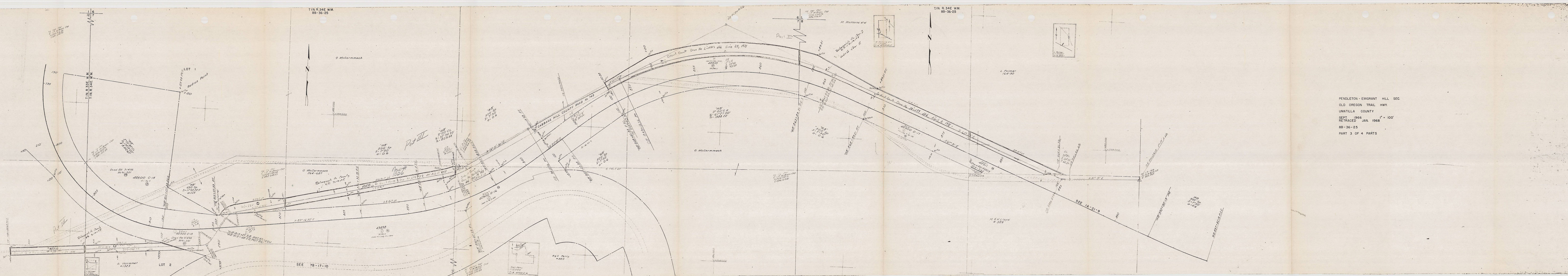


T1N R 34E W.M.
88-36-25

T1N R 34E W.M.
88-36-25



PENDLETON - EMIGRANT HILL SEC.
 OLD OREGON TRAIL HWY.
 UMATILLA COUNTY
 SEPT. 1966 1" = 100'
 RETRACED JAN. 1968
 88-36-25
 PART 3 OF 4 PARTS

PENDLETON - EMIGRANT HILL SEC.
 OLD OREGON TRAIL HWY.
 UMATILLA COUNTY
 SEPT. 1966 1" = 100'
 RETRACED JAN. 1968
 88-36-25
 PART 3 OF 4 PARTS