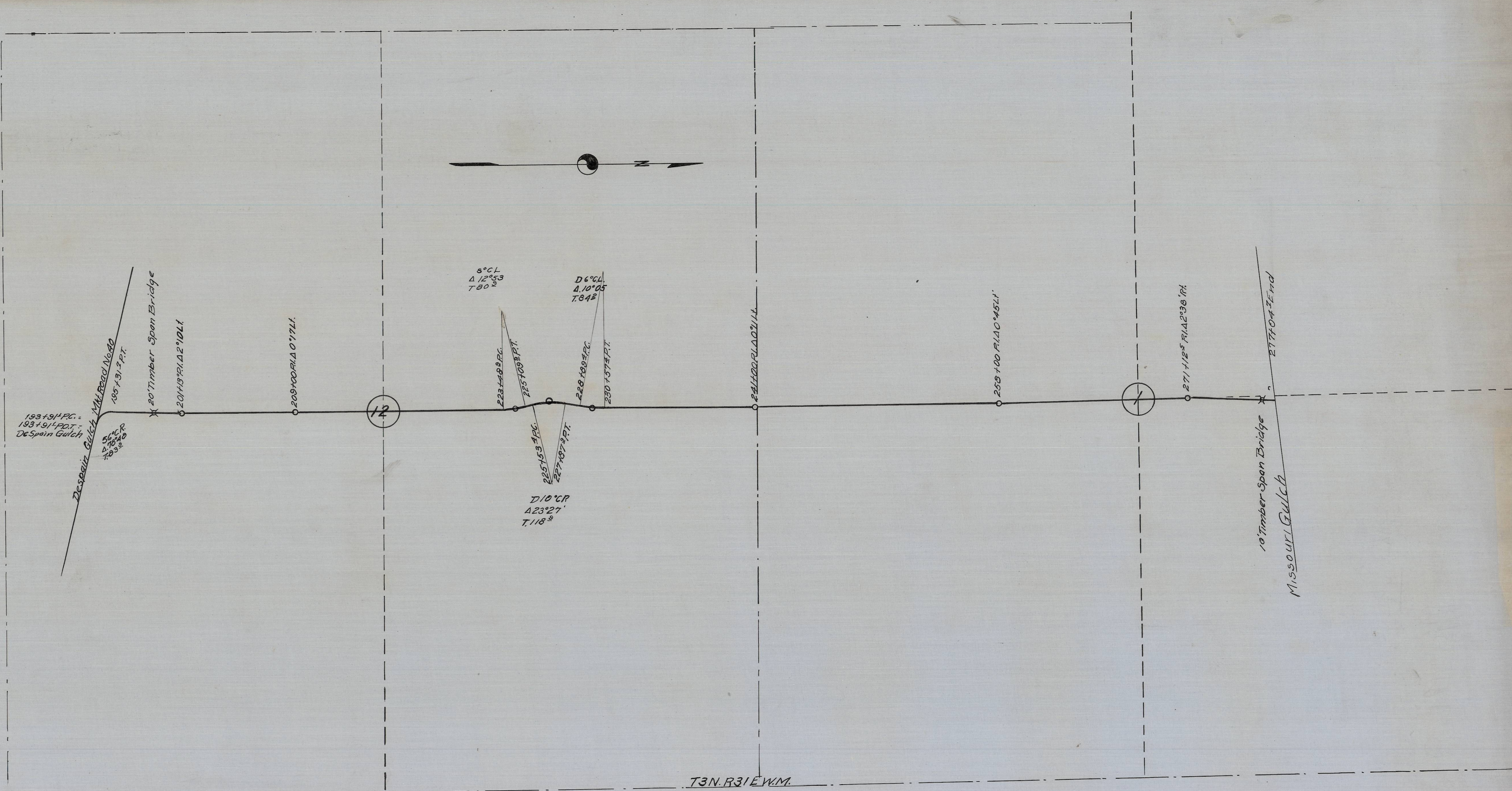


UMATILLA COUNTY ROAD DEPARTMENT
 DESPAIN GULCH - MISSOURI GULCH No. 58
 Jan. 15, 1931 Scale 1" = 400'

Approved
J. M. Schanep
 County Judge
W. E. Bean
 Commissioner
J. O. Hales
 Commissioner

A. D. Roth
 Oregon State M.K.H. Road Engineer
W. E. Oringer # 1497
 Roadmaster

Filed May 18, 1931
R. J. Brown
 Clerk



BOX "N"