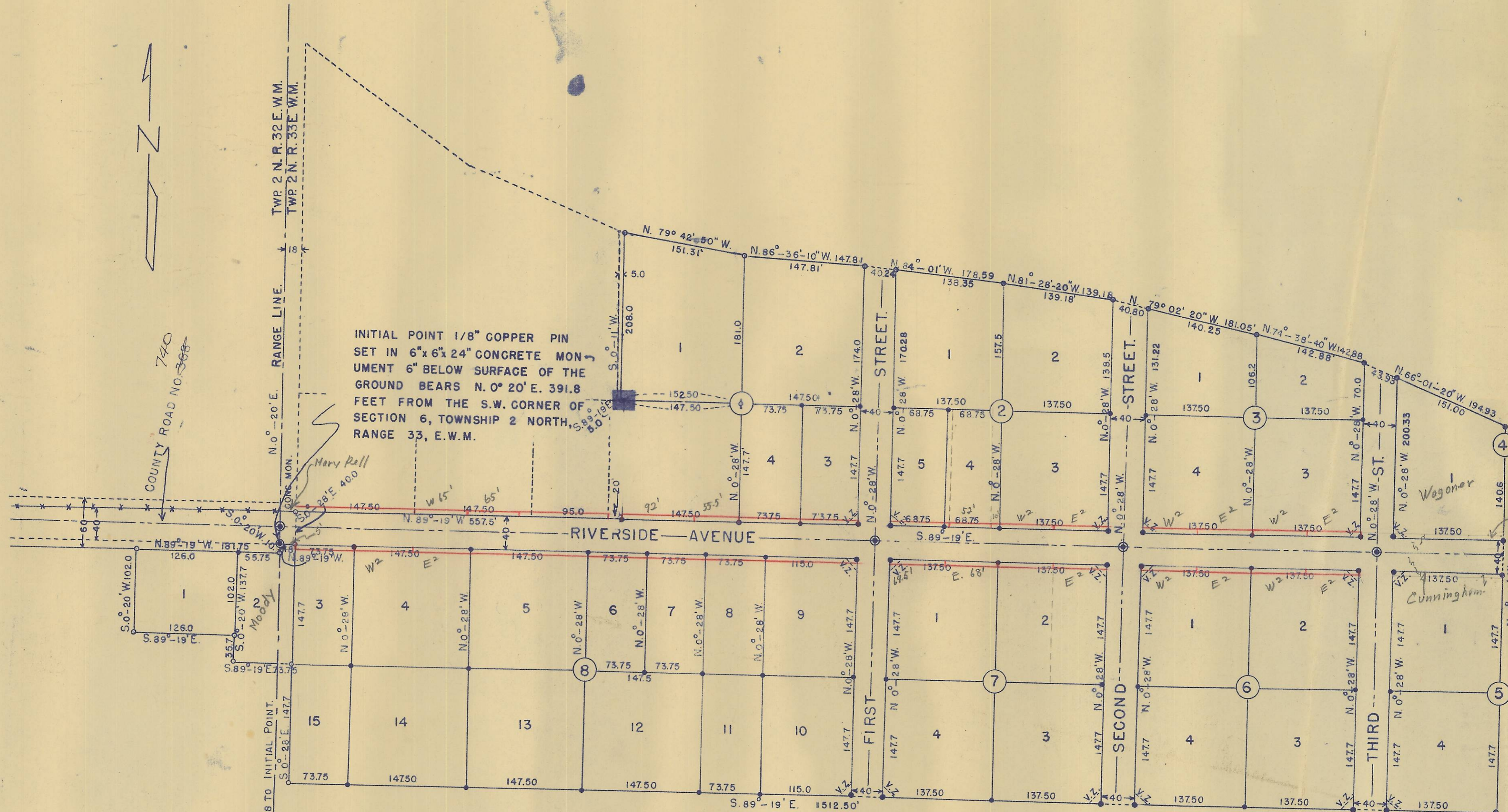


CRISPIN RIVERSIDE TRACTS.

UMATILLA COUNTY.
OREGON.

LOCATED IN S. 1/2 OF S.W. 1/4 SEC. 6, TP. 2 N. R. 33 E. W.M.
AND S.E. 1/4 OF S.E. 1/4 SEC. 1, TP. 2 N. R. 32 E. W.M.
BY F.B. HAYES SURVEYED & PLATTED.
OREGON REG. C.E. # 197.
SCALE 1" = 100'



INITIAL POINT 1/8" COPPER PIN
SET IN 6"x6"x24" CONCRETE MON-
UMENT 6" BELOW SURFACE OF THE
GROUND BEARS N. 0° 20' E. 391.8
FEET FROM THE S.W. CORNER OF
SECTION 6, TOWNSHIP 2 NORTH,
RANGE 33, E.W.M.

LEGEND.

- = 5/8" x 30" Steel Rod set vertically at all points where exterior boundary changes direction.
- = MONUMENTS Copper pin set in 6"x6"x24" concrete set 6" below the surface of the ground.
- V.Z. = AREA designated as Intersection Visibility Zones at certain block corners designated by dash lines. These lines or zones are set back along the boundary lines of the block a distance of fifteen feet.
- = 1/2" x 24" Rods set vertically in ground at each lot corner unless otherwise marked.

STATE OF OREGON, ss
County of Umatilla, ss
I, J. B. Hayes, Notary Public for the County of Umatilla, Oregon, do hereby certify that the foregoing plat of the Crispin Riverside Tracts is a true and correct copy of the original and that it is a correct transcription of the original and in my capacity as the same appears in the records of the office of the County Clerk of Umatilla County, Oregon, and in my office as Notary Public for the County of Umatilla, Oregon.
J. B. Hayes
Notary Public
A. D. 1949

STATE OF OREGON, ss
County of Umatilla, ss
This instrument was filed for record on
MAR 1 1949
at 3:45 o'clock P. M., and duly recorded
in Vol. 7 of Town Plats
Page 9
Jack Tolson
Recorder of Conveyances
By _____ Deputy
Fee \$ 8.50 No. 106205

Scale 1" = 100'

Box "N"
188

200/810/23