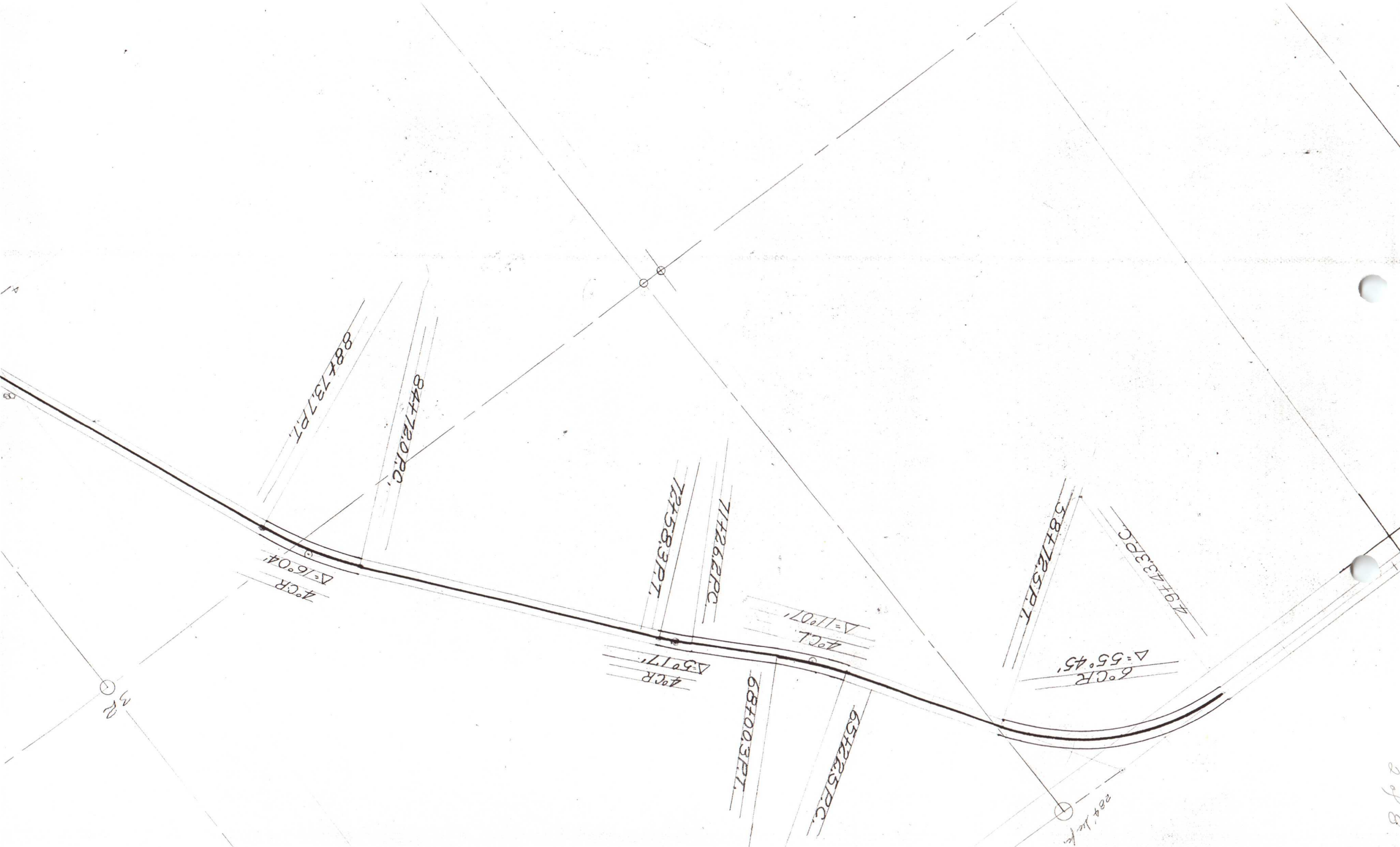


121° 0'
876

30474
BOSTON
M



1547816PT

1514812PC

1291582PT

1231471PC

1184011PT

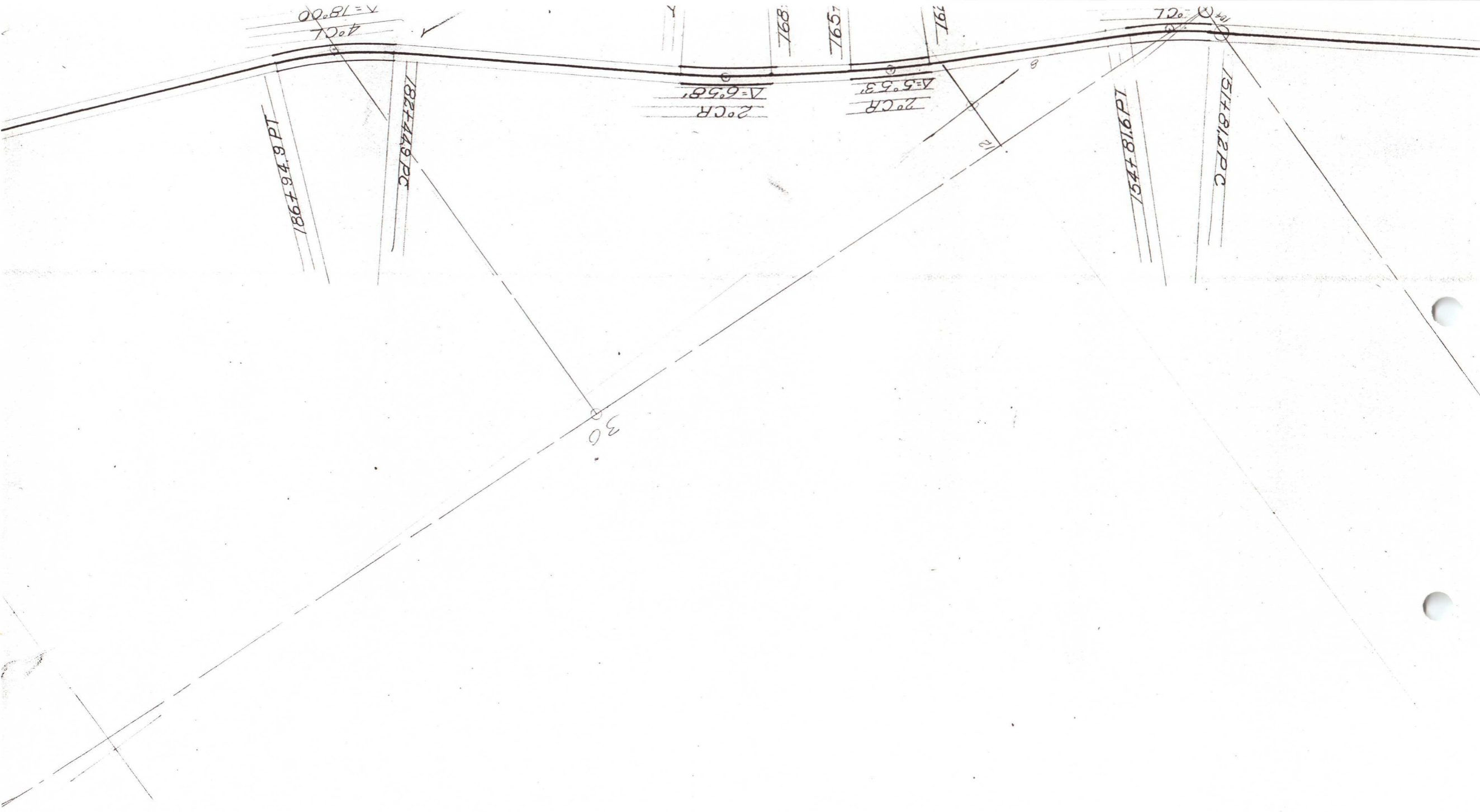
1154144PC

Sec to 114450

1744' Hydrant RL

4° CL
Δ=16° 28'

4° CL
9° 20'





24

1° C.L.
Δ = 1° 57'

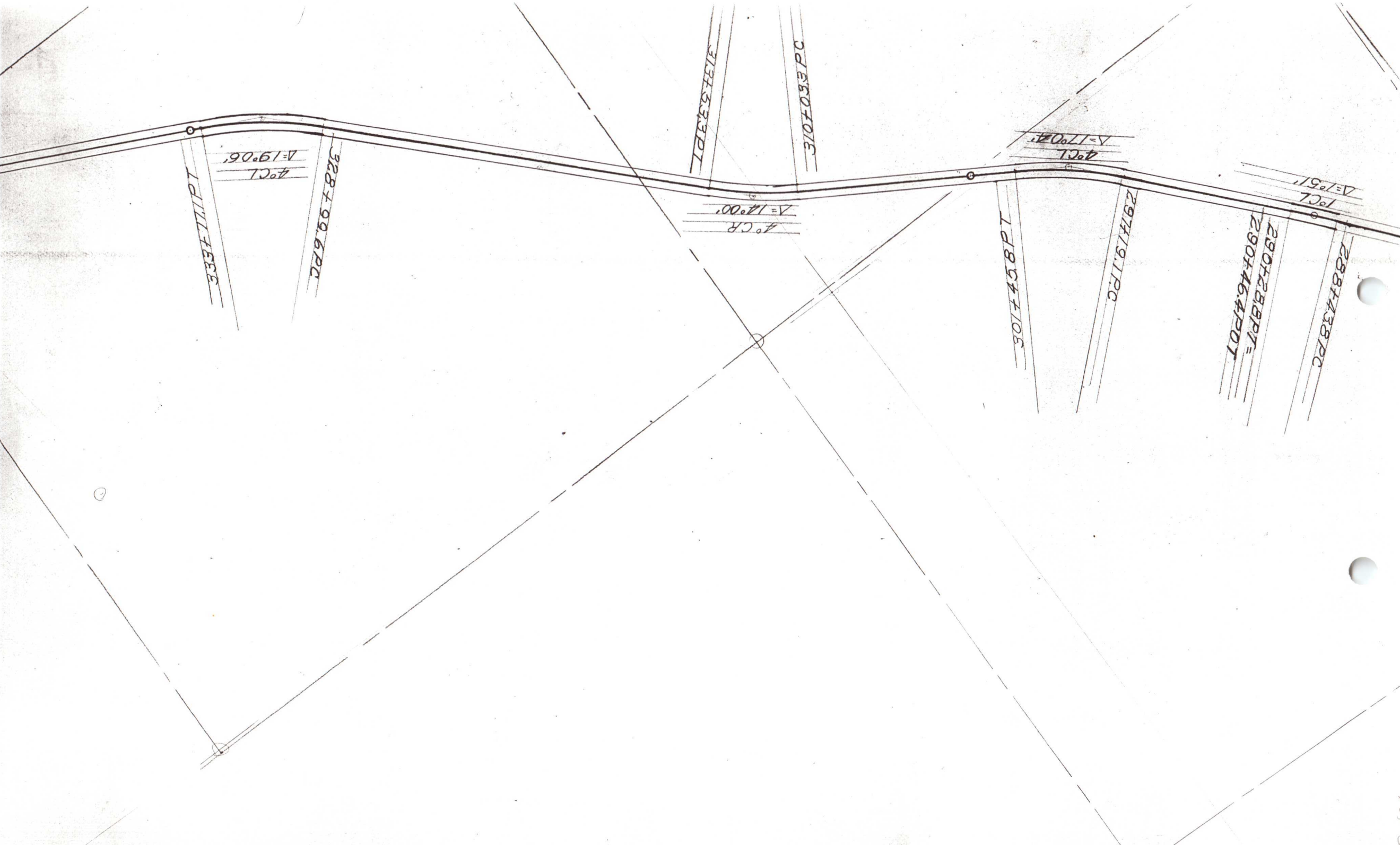
2901288PT
2901

2881438PC

2461188PT
2461142PT

2881438PC

4° C.P.
Δ = 33° 16'



333+111 PT
A=19°06'
4° CR
328+99.6 PT

313+33.3 PT
297+07.0 PC

A=17°00'
4° CR
A=17°00'

A=17°00'
4° CR
A=17°00'

297+19.1 PC
288+43.8 PC
280+28.8 PT
290+46.4 PDI

A=19°51'
4° CR
A=19°51'

379136.0 P.O.T

364164.2 P.T

4°CR
Δ=19°04'

359181.6 P.C

350110.5
351118.1 P.T

4°CL
Δ=15°00'

346143.7 P.C

15'

26'