

Rd #84

Report Field notes & Plat of a  
County Road from South West  
cor of sec 29 T. 4. N Range 34 East  
to Wild Horse Creek

Rd #8

To Hon County Court Matilla  
County Or. we the undersigned, viewers appointed  
to view and report on proposal route for a county  
Road leading from S.W. cor of sec 29 T. 4. N. R 34 E  
East to crossing of Wild Horse Creek beg leave to  
report favorable and recommend the adoption of  
said route at your next session

James McFarland  
A. R. Osborne

Field notes.

In the matter of County Road from the SW. cor  
of sec 29 T. 4. N. R. 34 E to Wild Horse Creek went to  
the place appointed. Aug 2<sup>nd</sup> 1880 being only one viewer  
present we remained until the evening of the 3<sup>rd</sup> then  
sent word to viewers to appear on the 4<sup>th</sup> which J. Mc  
Farland and Alex Osborn did and Road was run  
on the 4<sup>th</sup> with the following notes

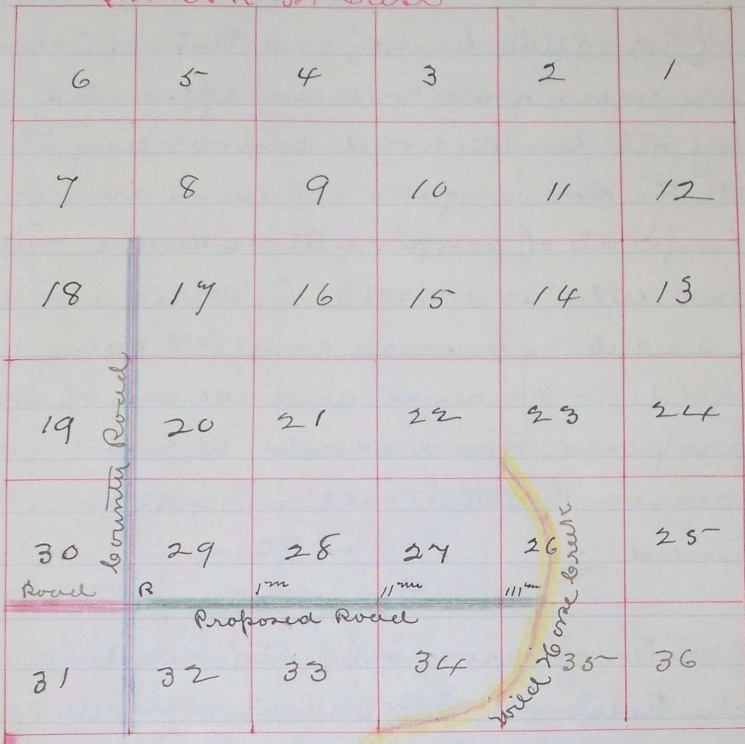
- set Post marked R at the SW cor of Sec 29 T. 4 N R  
34 for initial commencement point. Run
- East 80<sup>ch</sup> set one mile post with mound &c
- " 80<sup>ch</sup> " two " " " "
- " 80<sup>ch</sup> " three " " " "
- " 21 " angle Post

S. 62° E 1<sup>ch</sup> but R on Quaternary tree 6<sup>in</sup> dia for terminus of road  
Total length of Road is 3 miles & 22<sup>ch</sup>

J. H. Raley  
County Surveyor

Rd #84

D.H. & R. 34 East



Recorded Sept 21 1880  
J. Kearney clerk

Journal 446